

Evidence
Ray Mondragon

We will talk a little about the passage for today—and then more about the scientific evidence that verifies what we read in Genesis about the flood.

- | | |
|--------------------------------|----------|
| 2. Destruction of Civilization | 6.9-8.22 |
| a. Depravity before Flood | 6.9-12 |
| b. Designs for Flood | 6.13-7.5 |
| c. Deluge of Flood | 7.6-24 |
| d. Decrease of Flood | 8.1-22 |
| 1) Decline of Waters | 8.1-5 |
| 2) Discharging of Birds | 8.6-12 |
| 3) Disembarking from Ark | 8.13-19 |
| a) Departure conditions | 8.13-14 |

We are now seeing how Noah, his family and animals disembarked from the Ark.

8.13 Now it came about in the six hundred and first year, in the first month, on the first of the month, the water was dried up from the earth. Then Noah removed the covering of the ark, and looked, and behold, the surface of the ground was dried up.

Note again the timing is precise: and notice the 601st year, so this is after a whole year has elapsed. The chronology begins in the 600th of Noah and it is with respect to the life of Noah, so he was 600 and now is 601 and in the first month, first of the month. We can calculate the numbers there, using a 360-day calendar, but precise dating: when the water was dried up from the earth.

He mentions this two times and there will be a separation of time; in this first one it is that simply the waters have fully receded at least in the area where Ararat is and the Ark landed. The ground was probably still muddy and not totally dry—maybe

the surface only which seems to be the description to coordinate with the next one we will see later on in verse 14. This is a historical date, precisely to the very day. It lasted a year, the water was over the earth for over a year; the various stages that we have looked at and I have given you the science that goes along with some of those stages that we can observe even today, the remnants of traces of the Genesis flood are easily observable.

Because of what we can observe in other places—I will show some other slides—some of the waters may have receded later, not all at once, because of another significant series of events that took place as the *aftermath* of the flood.

8.13 Now it came about in the six hundred and first year, in the first month, on the first of the month, the water was dried up from the earth. Then Noah removed the covering of the ark, and looked, and behold, the surface of the ground was dried up.

And then Noah removed the covering of the ark. I'm not sure if this is on top or if it is reference to the door because the covering is to disallow the animals to get out.

We review some of the numbers:

Chronology

1. Beginning - 17th of 2nd month, 600th year
2. Prevailing - 150 days (7.24)
3. Mountains visible - 224th day (8.5)
4. Raven - 264th day (8.6)
5. Last dove - 285th day (8.12)
6. Dry surface - 314th day (8.12)

The beginning, chapter 7, verse 11: 17th of 2nd month of 600th year of Noah—a precise numbering, and remember they entered into the Ark 7 days before.

And then the waters prevailed—a 40 day event that is probably part of the 150 days. 7.24. This is probably the high

point of the event; at 150 days the waters are beginning to recede from the land—which takes a while.

Then 8.5: the mountains were visible which gives us a dating again. If you calculate the number of months and days this would end on the 224th day. So some time after the peak of the event, the mountains become visible.

Then we have the sending out of the raven in 8.6. Another dating, on the 264th day.

Another time frame: the release of the dove, on 3 occasions, separated by days. The last dove gives us another dating, 285th day.

And now in 8.13, the verse we just read, calculating, using the months and the days you will have 314 days with dry surface though probably underneath a little soggy.

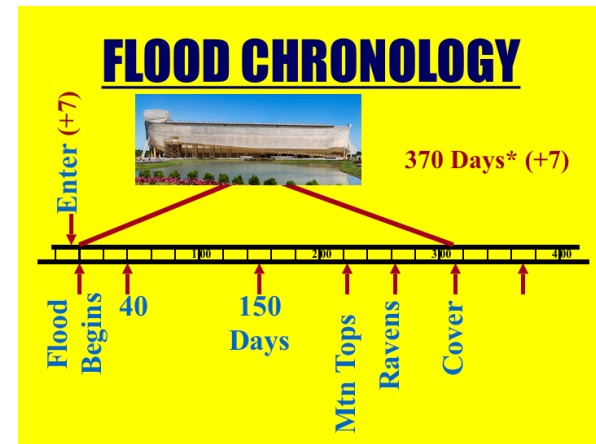
An illustration in engineering: in making concrete, you measure all the parameters, and one of the things very important in making concrete is the ratio of the water to the cement that eventually hydrates and hardens and puts all the aggregate together. When engineers make the measurements in order to get a proper mix, one of the precise measurements is how much water is in the aggregate.

So there is a way to determine what is called the saturated surface dry condition. You can figure out how much water is in the material, and you add some additional water to have the proper proportions.

What we probably have here is a saturated dry condition—that would be an engineering description of what would be on the earth at the time.

We can use the chart to lay out the chronology: so the ravens are sent out and now the cover is removed. And the observation that is made is that it is a saturated surface dry condition.

And after removing the ‘cover’ he could observe the surface of the ground was dried up. So we have a *surface* that is dried up, not necessarily good for heavy animals to walk on it; they might get bogged down because it is only surface dry.



But we have another reference, and notice another reference to dryness....

8.13 Now it came about in the six hundred and first year, in the first month, on the first of the month, the water was dried up from the earth. Then Noah removed the covering of the ark, and looked, and behold, the surface of the ground was dried up.

... in verse 14, In the second month rather than the 1st month, on the twenty-seventh day, the earth was dry.

8.14 In the second month, on the twenty-seventh day of the month, the earth was dry.

It is not redundant, time has gone by, so now we have more solidified ground, and probably capable of sustaining not only heavy animals, but mankind and everything else. So this is the date of the departure and the next verse will lay out the instrucciones to disembark. The month and day again are referenced to the 601st year of Noah.

- 2. Destruction of Civilization 6.9-8.22
 - a. Depravity before Flood 6.9-12
 - b. Designs for Flood 6.13-7.5
 - c. Deluge of Flood 7.6-24
 - d. Decrease of Flood 8.1-22
 - 1) Decline of Waters 8.1-5
 - 2) Discharging of Birds 8.6-12
 - 3) Disembarking from Ark 8.13-19
 - a) Departure conditions 8.13-14
 - b) Departure Instructions 8.15-17

So those are the time-frame conditions, the earth conditions at least from the observations that Noah has made. Remember we noted last last time, Noah is conducting different experiments: the discharging of the birds are scientific experiments to determine and gather information in order to make some decisions. And, if that were not enough, then we have departure *instructions* from God Himself:

8.15 Then God spoke to Noah, saying,

16 “Go out of the ark, you and your wife your sons and your sons’ wives with you..

Go out of the ark. The last time day in verse 14.

8.17 “Bring out with you every living thing of all flesh that is with you, birds and animals and every creeping thing that creeps on the earth, that they may breed abundantly on the earth, and be fruitful and multiply on the earth.”

Again that recurring repetition, not only to emphasize the instruction and the reality of who is on the Ark. Bring out with you every living thing of all flesh that is with you, includes all the animals, birds, every creeping things....again the repetition... different animals in the broadest of categories.

8.17 “Bring out with you every living thing of all flesh that is with you, birds and animals and every creeping thing that creeps on the earth, that they may breed abundantly on the earth, and be fruitful and multiply on the earth.”

Now he includes the animals and gives their purpose: that they may breed abundantly and it appears that the environment now is conducive: that is part of the waiting and also so they can let the animals out to carry on with their instincts and reproduce. The conditions are now right.

that they may breed abundantly on the earth, and be fruitful and multiply on the earth. The earth has been cleansed, replenished in terms of minerals and all that is needed for plant life which apparently has already been productive—enough to sustain all the animals and mankind.

- 2. Destruction of Civilization 6.9-8.22
 - a. Depravity before Flood 6.9-12
 - b. Designs for Flood 6.13-7.5
 - c. Deluge of Flood 7.6-24
 - d. Decrease of Flood 8.1-22
 - 1) Decline of Waters 8.1-5
 - 2) Discharging of Birds 8.6-12
 - 3) Disembarking from Ark 8.13-19
 - a) Departure conditions 8.13-14
 - b) Departure Instructions 8.15-17
 - c) Disembarking of Passengers 8.18-19

8.18 So Noah went out, and his sons and his wife and his sons’ wives with him.

8.19 Every beast, every creeping thing, and every bird, everything that moves on the earth, went out by their families from the ark.

Again, the word *kol* for everything that has survived, will leave the boat. That word emphasizes the universality of the flood.

went out by their families, es decir, it was an orderly departure, probably with the direction of Noah. Not a stampede of larger animals stepping on small ones. Thus was the disembarkation.

Then back to the chronology we have the last note in terms of the flood, 8.14, and that is on the 27th of the 2nd month of the 601st year of Noah's life. Adding this and comparing it to the beginning gives you 370 days, based on what most conclude—that the calendar had a 360 day year, not what we have today. There are other reasons why the year extends 5+ days now.

Chronology

1. Beginning - 17th of 2nd month, 600th year
2. Prevailing - 150 days (7.24)
3. Mountains visible - 224th day (8.5)
4. Raven - 264th day (8.6)
5. Last dove - 285th day (8.12)
6. Dry surface - 314th (8.12)
7. Disembarking - 370th day (8.14) 27th of 2nd month, 601st year



This is a long period of time, being global, universal, 370 days plus the 7 they spent there before the flood. There is lots of detailed chronology that you can trace.

- | | |
|---------------------------|---------|
| d. Decrease of Flood | 8.1-22 |
| 1) Decline of Waters | 8.1-5 |
| 2) Discharging of Birds | 8.6-12 |
| 3) Disembarking from Ark | 8.13-19 |
| 4) Dedication after Flood | 8.20-22 |

En verses 20-22 we have the dedication of the ark, sacrifices are made and we will look at that later. This is the reason why *extra* animals were instructed to be taken on to the ark.

Now some more scientific evidence that I say is overwhelming. We already talked about the geophysics that is observable, the mid-Atlantic ridge and plate tectonics that we can study today. And the only difference from what we have today would be the *speed* of the movements of these tectonic plates (which is a subdivision of Geophysics.) The ring of fire and the mid-Atlantic are evidence that we can observe today, of traces that were left behind by the Genesis flood.

Fossils can be observed in the geological column; it takes catastrophic events to form fossils. So they are all over the world; the world has experienced catastrophic events everywhere. And the best explanation is *one event* rather than a series of many events in all of the layers of the geological column: paleontology.

Science

1. Geophysics
2. Plate Tectonics
3. Paleontology
4. Coal Petrology
5. Petrophysics
6. Geology Sedimentation

We talked about coal, coal petrology, that is, the study of rocks and minerals and coal. It is plant material; the best explanation is the Genesis flood. In fact, the secular explanation is very weak and does not answer a lot of questions. Similarly, with petrophysics and oil deposits, and again they are all over the world, coal beds and oil beds. And last time we ended by looking at geology and the geologic column, the layers that point to catastrophic conditions, particularly the sedimentation—where we will continue now.

Again, a reminder: in the geologic column, which you will find in any basic college textbook, has these layers. The important line is the boundary between the Cambrian and the Pre-Cambrian, the layers above were all laid down by water—that’s sedimentary rock. The *Pre-Cambrian* rock is basement rock, very different.

We as creationists interpret differently. We use the same data, we don’t try to argue against any of these layers—they do in fact exist. The issue is, were they laid down over the millions of years that the chart indicates, like the Jurassic: it says 46 million years of layering. The difference is that we interpret the entire Geologic column based on our understanding of Genesis 6-8 and see a difference between the layers starting with the Cambrian all to way to the surface laid down by water and our interpretation is that it was laid down by the Genesis flood.

The Geologic Column

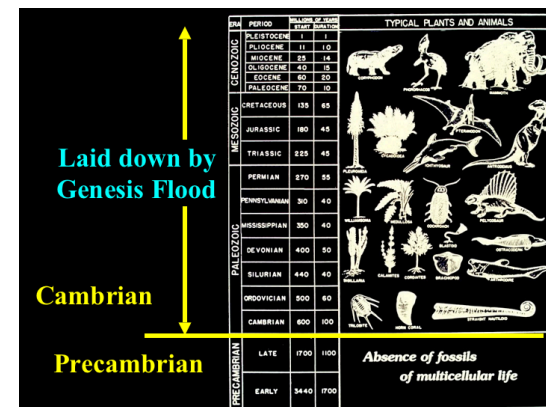
ERA	PERIOD	EPOCH	SUCCESION OF LIFE
CENOZOIC recent life	QUATERNARY 0-1 Million Years Rise of Man	Recent Pleistocene	
	TERTIARY 62 Million Years Rise of Mammals	Pliocene Miocene Oligocene Eocene	
MESOZOIC middle life	CRETACEOUS (125) 75 Million Years Modern seed bearing plants, Dinosaurs		
	JURASSIC (180) 46 Million Years First Birds		
	TRIASSIC (125) 49 Million Years Cycads, first dinosaurs		
PALEOZOIC ancient life	PERMIAN (270) 50 Million Years First reptiles		
	PENNSYLVANIAN 30 Million Years First insects		
	MISSISSIPPIAN 35 Million Years Many arcnoids		
	DEVONIAN (400) 80 Million Years First seed plants, cartilage fish		
	SILURIAN 20 Million Years Earliest land animals		
	ORDOVICIAN 75 Million Years Early bony fish		
CAMBRIAN (600) 100 Million Years Invertebrate animals, Tracheopods, Trilobites			
PRE-CAMBRIAN			Very few fossils present (bacteria-algae-pollen?)

We talked about mountain building and surface deformations of the earth as a result of the movement of these plates. This is quote from an evolutionist. They don’t know...

“The cause of the deformation of the earth’s outer layers & the consequent building mountains still effectively evades an explanation.”
AJ Eardley

They don’t understand mountain building; what caused them. This is an old quotation, and some of the recent geologists are beginning to see that plate tectonics does in fact give an explanation. But up until recently evolutionists did not have an explanation. And the Genesis Flood, with all the things we talked about, gives a perfect explanation. We talked about the flood producing tidal waves, thousands of feet thick, ripping up everything in its path, including entire forests, all animals, all humans—everything—transporting it thousands of miles and re-depositing it, laying it down in these layers that you can observe today—the aftermath and results of the Genesis Flood.

1. Rip it up
2. Transport it
3. Redeposit it



Now I want to talk about what we an observe today of the receding waters of the flood.

Another review: We talked about rapid burial by catastrophic events of fossils. Polystrate, a kind of fossil. We talked about sandstones deposited under water; cross bedding, evidence of water laying down because of the angle of cross bedding; sharp boundaries; surface markings: tracks of different species in the sandstone which you can see, and dinosaur tracks (at Clayton Lake, New Mexico).

Rapid Formation

1. Rapid burial of fossils
2. Polystrate fossils
3. Sandstones deposited under water
4. Cross bedding
5. Sharp boundaries
6. Surface markings
 - > Fossilized reptile footprints in the Coconino Sandstone
 - > Tracks of several reptile species
 - > Just off Hermit Trail near Grand Canyon

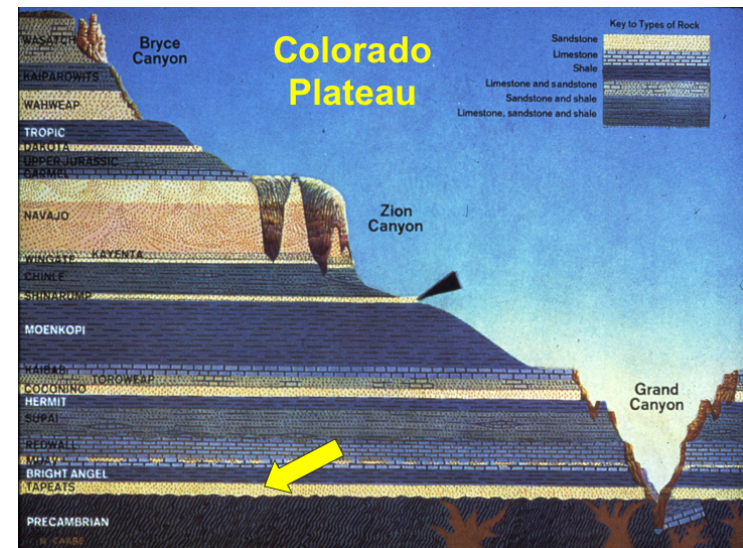
Evidence

1. Massive blankets
2. Folding
3. Cross bedding
4. Amphitheaters
5. Sharp boundaries
6. Great Unconformity

We talked about all of these formations as evidence of rapid moving waters and displacement as a result of tectonic effects. The sharp boundaries indicate that they were not laid down over millions of years or even thousands—otherwise you would expect eroding of the surfaces and *not* sharp boundaries.

There is also what is called the Great Unconformity. This is a geological description, it's what geologists call this, not creationists. The secular world sees this all over the world, but

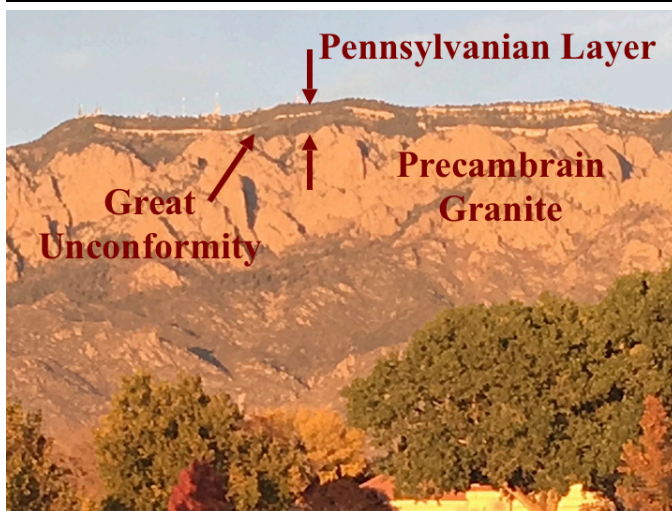
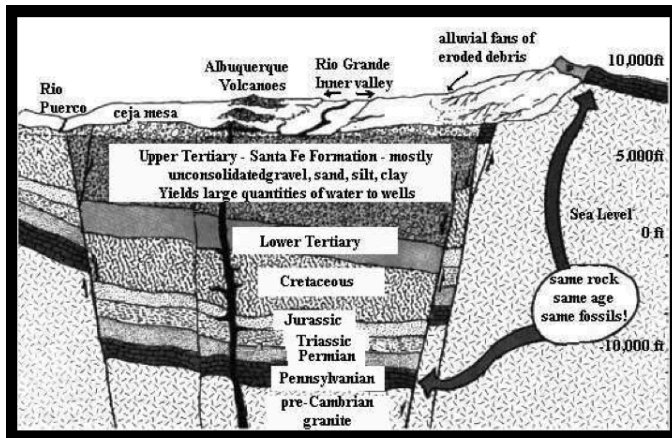
you can see it very clearly in the Grand Canyon: it is the boundary between the Cambrian layer and the pre-Cambrian rock. They call it the Great Unconformity because you have radical change from sedimentary rock to basement rock. If you dig down, anywhere in the world you would be able to see it. In the Grand Canyon we have a layer called the Tapeats Formation which is a Cambrian layer, and as you can see from the chart the layer below it is basement rock—igneous rock rather than sedimentary rock. The jagged, irregular rock below is basement



rock. And the boundary is the Great Unconformity. At that point, the flood ripped up everything in the world and re-deposited it in layers that you can see in the Grand Canyon. That effect took place all over the world, on all of the continents. You can find the Unconformity everywhere in the world with sedimentary rock everywhere above it.

And the Sandia crest seen from Albuquerque, New Mexico: The crest itself has clear layering and that is the Pennsylvanian layer. Looking at this graphic layer you can see it far below the

Rio Grande Valley, so apparently the layers above the crest eroded away as the waters were receding, so all that is left is that Pennsylvanian Layer that goes off to the east (right). And there is uplift, part of the geological movement of plates that we mentioned earlier. So, the Pennsylvanian layer is the crest itself, and you can see along there, in some places, you can see the Unconformity: the layer above and below the Pre-Cambrian granite. Here is an example of where you don't have all the layers above the Pre-Cambrian granite. This is an example of the Geologic Column as a composite of the different types of layer around the world—this being an example of having only some of the layer in the Albuquerque area.



Flood Stages

- A. Causes of Flood
- B. Inundation
- C. Recession Stage
 1. Mountain building
 2. Volcanic eruptions

We have talked about the causes of the flood and the inundation itself. Then lately we talked about the receding of the waters which included mountain building and volcanic eruptions—about which I will say more.

Science

1. Geophysics
2. Paleontology
3. Coal Petrology
4. Petrophysics
5. Geology
6. Vulcanism and Catastrophes

There are examples such as the Columbian Plateau where it is 1000 feet (305 meters) thick and 200,000 square miles (51,800,000 hectares) of active lava flows.

In Iceland, the longest eruption of the 21st Century: over 6 months, starting 2/19/21. These are just the aftermaths of the geological action that was very intense during the Genesis Flood. In the research I have there are about 500 active volcanoes and about 1,500 extinct ones.

Close to Bible times: Mount Vesuvius's eruption preserved the city of Pompeii, so with the excavation we can see in great detail what the city looked like in the 1st Century.

Flood Stages

- A. Causes of Flood
- B. Inundation
- C. Recession Stage
 - 1. Mountain building
 - 2. Volcanic eruptions
 - 3. Massive Erosion

Another result of the receding of the waters was massive erosions. The Biblical text talks about the waters prevailing and seeming to peak after 150 days, and it is implied that the waters receded leaving massive erosion all over the surface of the earth, especially evidenced in places where you don't have a lot of vegetation like western U.S.A. But the same phenomenon would have occurred all over the world.

Now I will give you an explanation for the formation of the Grand Canyon. Obviously the layering would have been laid down as the waters began to *slow* and then as the waters began to *recede* there are other phenomena. There is evidence of ancient *lakes* in Utah, Arizona, northwestern New Mexico and into Colorado; and remember it is the Colorado River that flows through the Grand Canyon.

There evidence of these ancient lakes, and the theory is that in the midst of some of these massive movements a land area that was holding these lakes was breached and released all of these waters so that they flowed in a matter of days, maybe weeks, and carved out the Grand Canyon. This would be the after effects of the Genesis Flood and part of the receding of the waters and maybe even after some time.

Noah and his family would have been off the Ark, so this is later from that point of view. By the way, these lakes do not exist and have not for years since after the flood. But that is what produced the Grand Canyon: the aftereffects of the draining of ancient lakes which show clear evidence, like shorelines, of their existence in the past.



Devils Tower in NE Wyoming - 902 feet

Elsewhere, in Northeastern Wyoming, there is the Devils Tower, with all the material around the core of the volcano has eroded away from the core and all you have is the remains of what would have been hot lava at one time. This kind of phenomena indicates that there has been a lot of rapid erosion.

Another evidence is the '2nd biggest flood' that we know about, the Lake Missoula Flood where probably ice age glacial lakes after the melting of glaciers produced huge lakes and something—maybe the melting of ice—caused the release of these waters and it flooded that whole area in Washington State, part of Idaho and going through the boundary between Washington and Oregon. All of the evidence points to rapid erosion as a result of the melting of the Cordilleran Ice Sheet in southern Canada and in the northern part of the US. So glaciers also contributed to erosion.

Another site you can visit is the Grand Coulee Scablands, 50 miles (80 kilómetros) and 1000 feet (305 meters) deep. The best explanation is rapid movements of high velocity, huge quantities of water. Again these would be aftermaths of the Genesis Flood.

There is lots of evidence of catastrophic events in earth history which points to the ultimate catastrophic event of the Flood.



In New Mexico, this canyon, Rio Grande Gorge: from the top of the bridge to the river 565 feet (172 meters) deep and 1280 feet (390 meters) across. The geologists say that the canyon was carved out over millions of years. But it makes better sense that it is a remnant of rapid movement of waters carving out this canyon in a relatively short time during the receding of different stages of the Genesis Flood waters.

Flood Stages

- A. Causes of Flood
- B. Inundation Stage
- C. Recession Stage
 1. Mountain building
 2. Volcanic eruptions
 3. Massive erosion
 4. Ice age

The best explanation for the ice age is the after effects of the Genesis Flood, just as the best explanation for much of this massive erosion is the aftereffects of the Flood. All of this adds up to overwhelming evidence of a world-wide Genesis Flood.

There is evidence everywhere of God as Creator and Judge!