

HERMENEUTICS





ТЕХНОЛОГИЯ

TYPES

An iceberg floating in the ocean. The tip of the iceberg is visible above the water line, while the much larger, submerged part is visible below. The sky is blue with light clouds, and the water is a deep blue.

- ✧ **Persons - Adam**
- ✧ **Institutions - Passover**
- ✧ **Offices - priesthood**
- ✧ **Events - wilderness**
- ✧ **Actions - burned offering**
- ✧ **Things - tabernacle**

SPECIAL HERMENEUTICS



1. Narrative

6. Epistles

2. Poetry

3. Wisdom

4. Prophecy

5. Typology

EPIC STYLES



EPISTLES

➤ **Importance**

➤ **Extent**

27 NT BOOKS

- ❖ How Many Narrative books?
- ❖ How Many Prophetic books?
- ❖ How many Letters?

❖ 30

EPISTLES

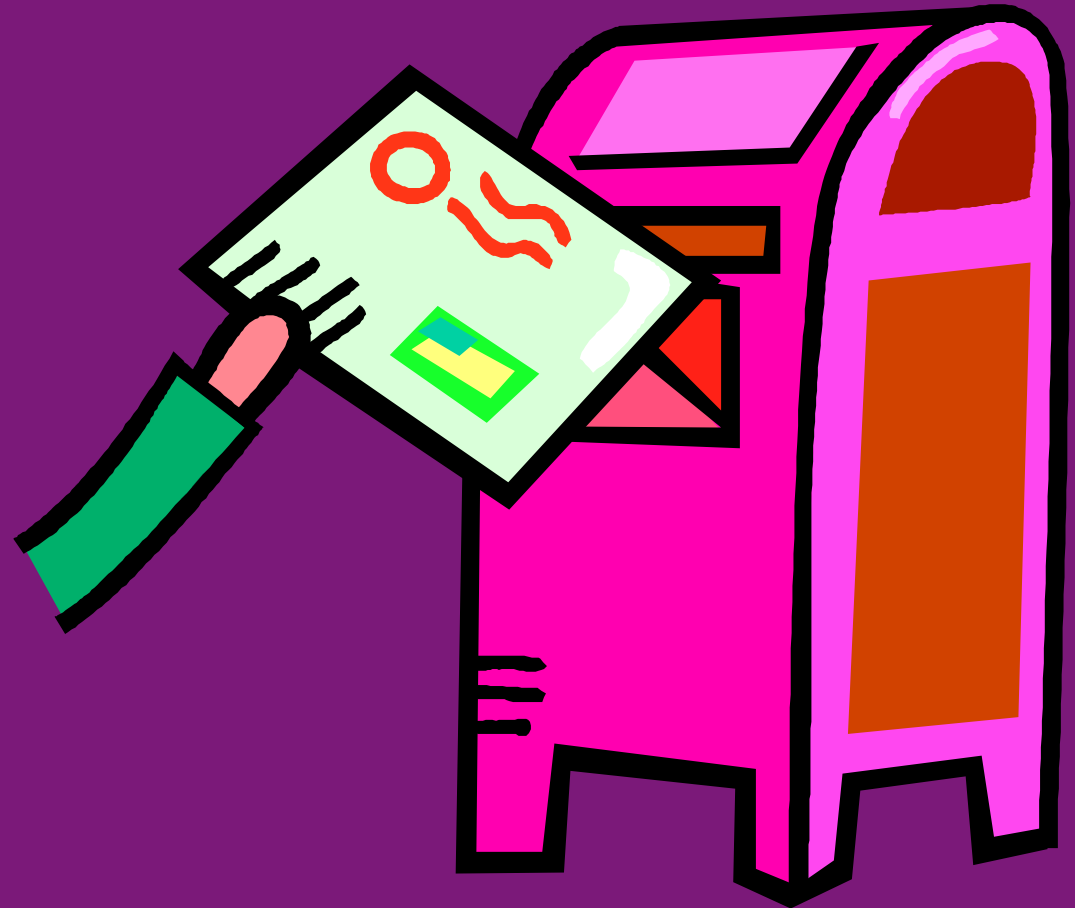
- Pauline - 13 (Rom-Tit)
 - General - 8 (Heb-Jd)
 - Revelation - 7 (2-3)
 - Acts - 2 (15:23-29, 23:25-30)
- = 30

EPISTLES

- **Importance**
- **Extent**
- **Characteristics**

CHARACTERISTICS

1. Occasional

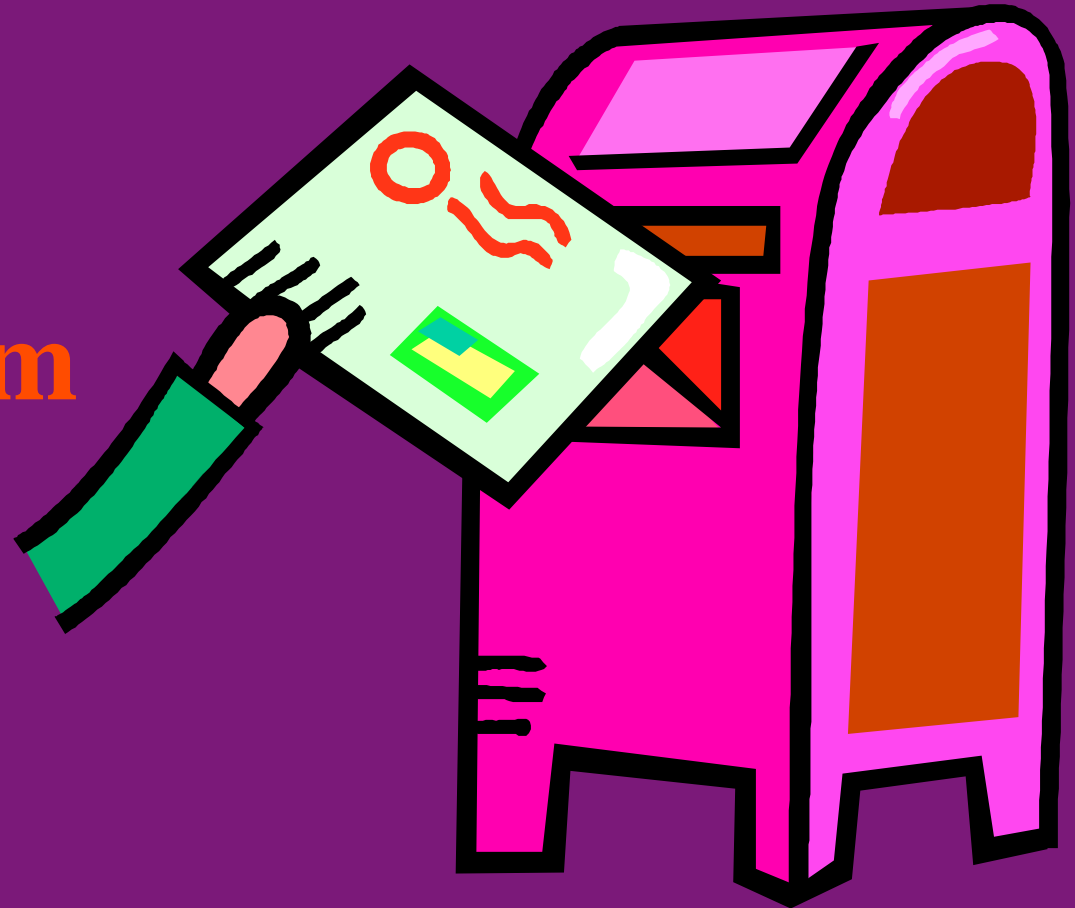


OCCASSIONAL

- ✧ **Main interpretive problem**
- ✧ **Intended for a specific occasion in 1st century**
- ✧ **Circumstance of readers or author**
- ✧ **Sometimes a crisis or problem**

CHARACTERISTICS

1. Occasional
2. Doctrinal
3. Mixed Form



ΕΠΙΣΤΟΛΗ

- 1. Official letters with authority**
- 2. Personal letter**
- 3. Spiritual or metaphorical**
- 4. Apostolic but not inspired**
- 5. Inspired letters of NT**

MIXED FORM

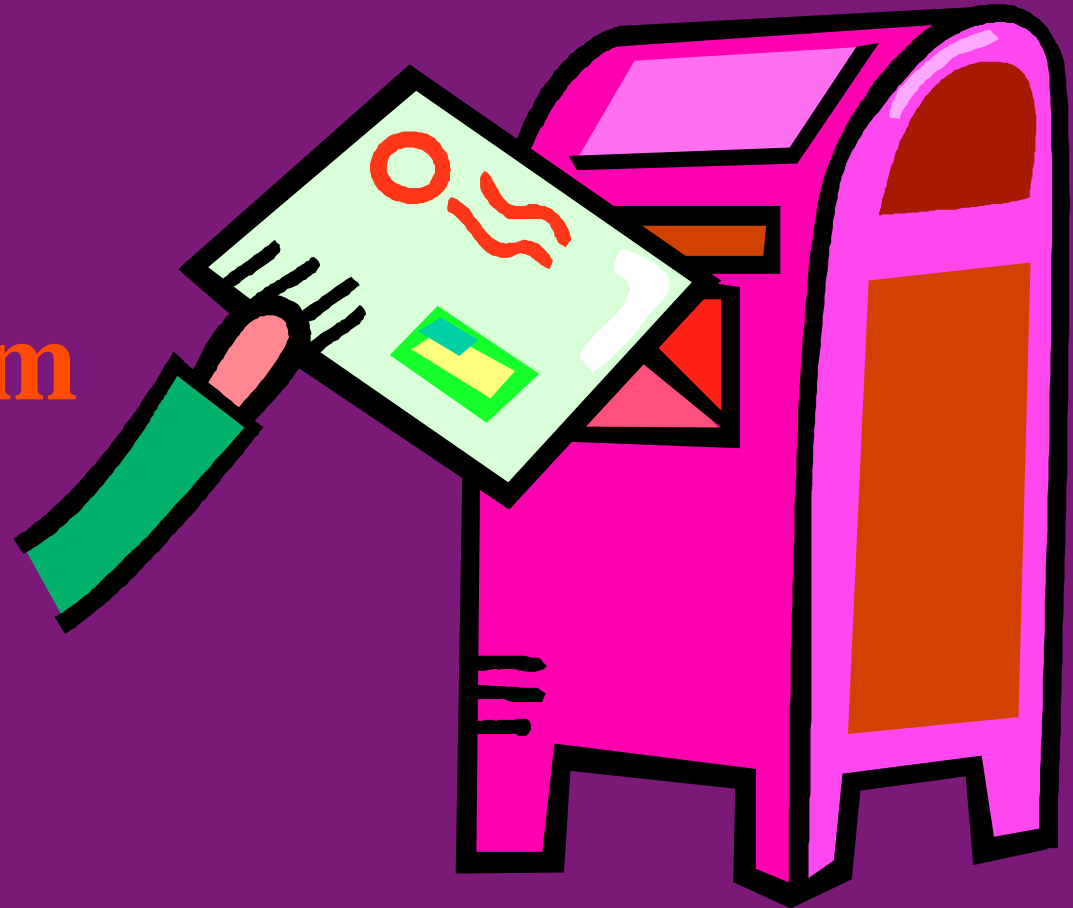
- **Letter - non-literary**
private
- **Epistle - literary**
public

“An epistle is a work of art; a letter is a piece of life ... One is like the carefully finished photograph which does you justice; the other is like a snapshot that shows you as you are.”

(Robinson)

CHARACTERISTICS

1. Occasional
2. Doctrinal
3. Mixed Form
4. Direct
5. Apostolic



EPISTLES

- **Importance**
- **Extent**
- **Characteristics**
- **Features**

FEATURES



- 1. Salutation**
- 2. Thanksgiving**
- 3. Prayer**
- 4. Body**
- 5. Exhortations**
- 6. Closing**

WILL

- ❖ Narrative - Experience
- ❖ Poetry - Emotions
- ❖ Prophecy - Conscience
- ❖ Discourse - Intellect