

BIBLICAL FOUNDATIONS -

Kingdom - 1Sam-2Kgs

FOR ALL THINGS

Goliath - 17:1-4, 40, 46

**Elah Valley
from Azekah**







**Elah Valley
from west**

Elah Valley and Azekah from Socoh



Azekah from Socoh

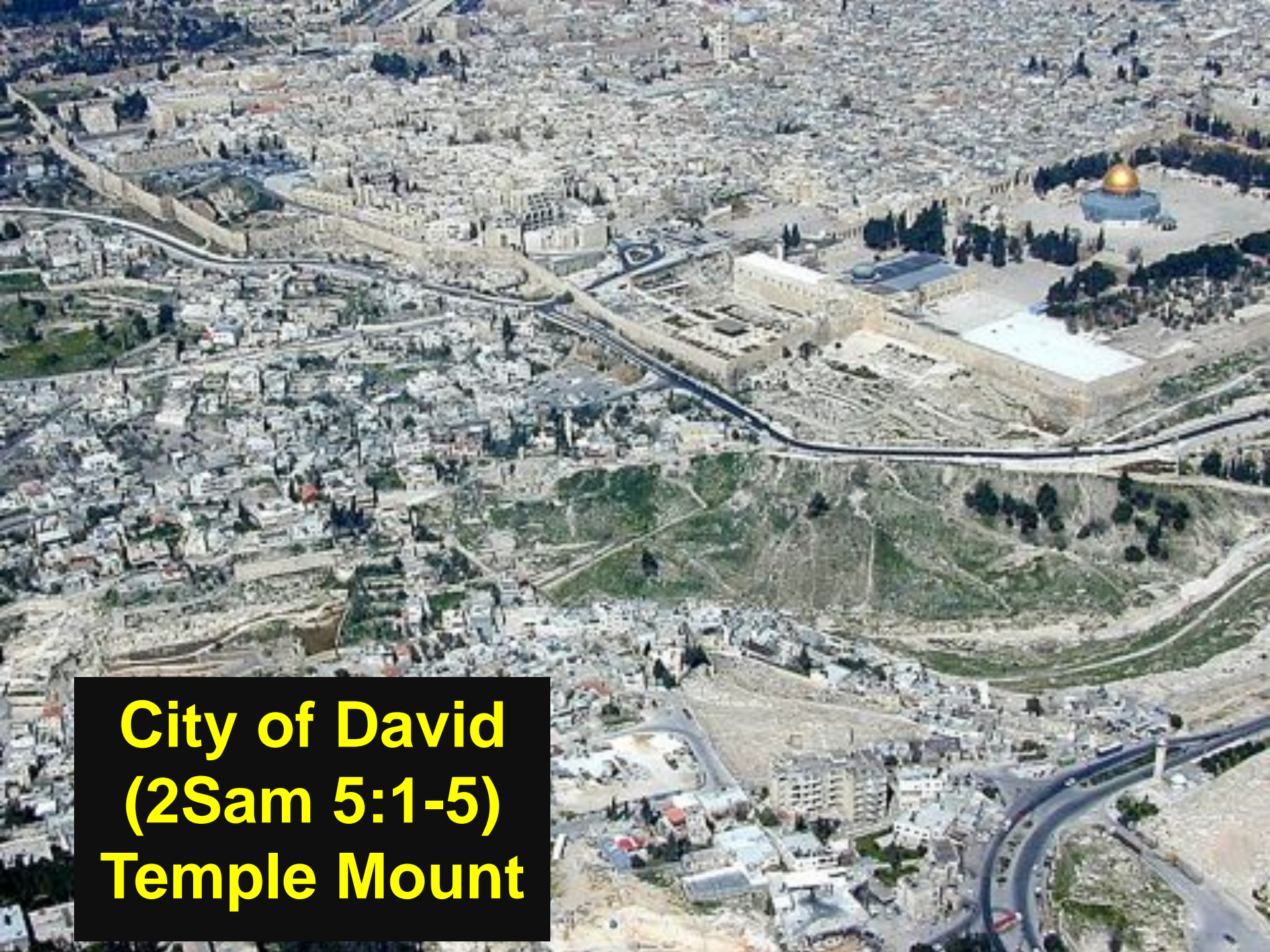


Picking up smooth stones in Elah brook



- **Assassination attempts - 18:10-11**
- **Defeated Philistines - 17:20-54**
- **Defeated Amalekite - 27:7-12**

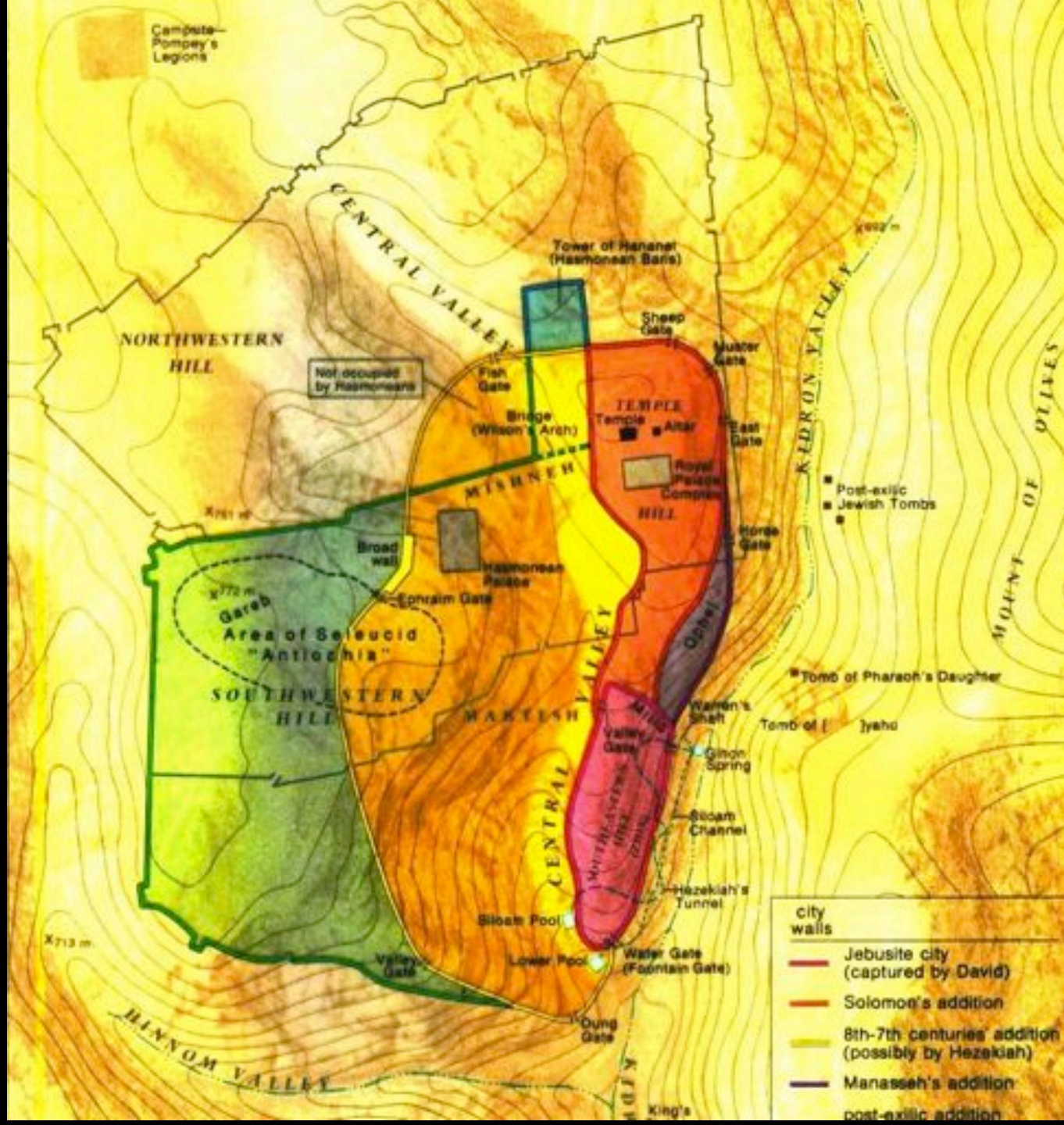
**Socoh on right
Looking east in
Elah Valley**



**City of David
(2Sam 5:1-5)
Temple Mount**



Citadel of David from NW

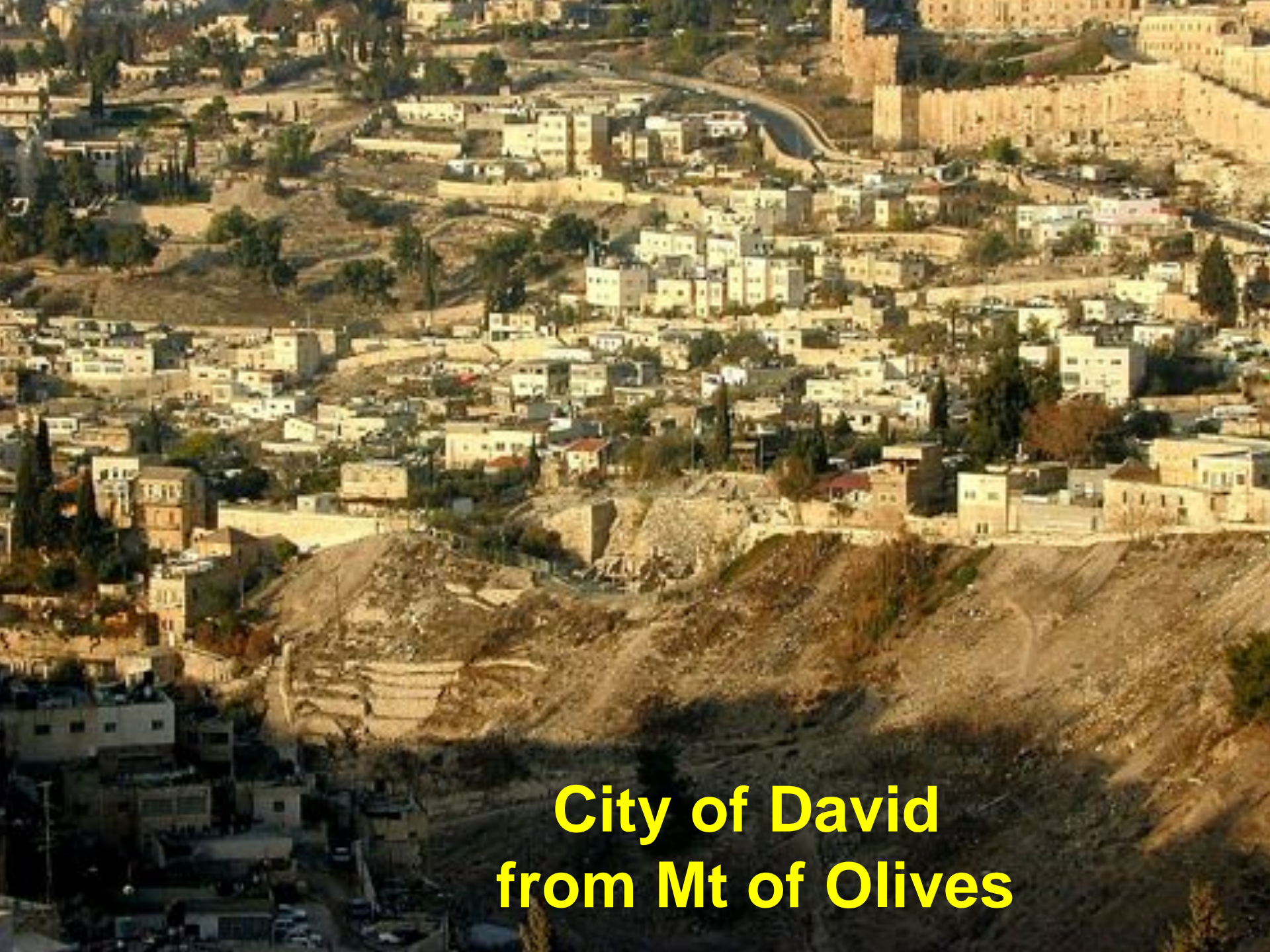


City of David from Haas Promenade



City of David, Kidron Valley Silwan from north





**City of David
from Mt of Olives**

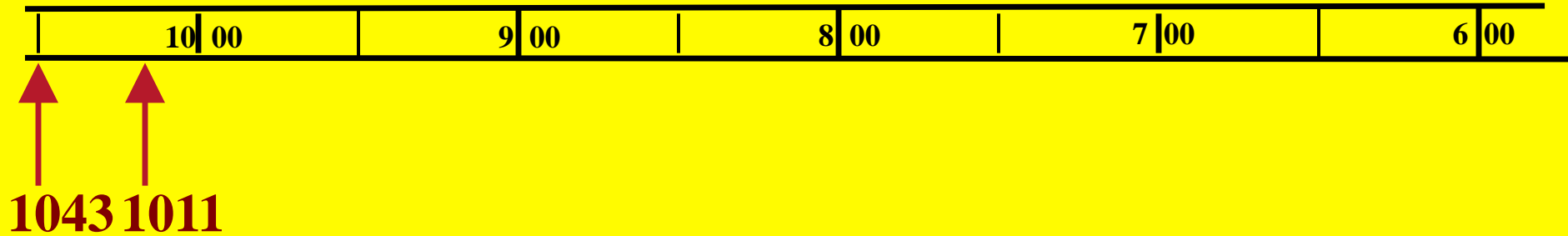


**Stepped Stone
Structure 10th century**



KINGS CHRONOLOGY

Saul's Reign
David's Reign



KINGDOM

1. Kingdom

is God's idea

2. Features

of Kingdom



KINGDOM - Foundation

1. Rooted in Creation Mandate - ruling
2. Distinct Nation - Israel
3. Godly King - David
4. Security & Peace - in land

Temple Mount

COVENANT

- Parties - God & David/descendants
- Stipulations - Father/son relationship
discipline
centered in Jerusalem
- Signing - Unconditional
- Sign - Dynastic line

COVENANTS

NOAHIC

(Unconditional)

ABRAHAMIC

(Unconditional)

MOSAIC

(Conditional)

Seed

Blessing

Land

PALESTINIAN

DAVIDIC

NEW

DAVIDIC COVENANT


(2Sam 7:10-17, 19)

- **Secure kingdom**
- **Temple**
- **Father-Son relationship**
- **Kings chastened**
- **Unconditional**
- **Centered in Jerusalem**
- **Future Messiah**



KINGDOM - Foundation

1. **Rooted in Creation Mandate - ruling**
2. **Distinct Nation - Israel**
3. **Godly King - David**
4. **Security & Peace - in land**
5. **Guaranteed by Covenant - Davidic**
6. **...**

A photograph of a stone wall, likely part of a historical building. The wall is constructed from large, irregular, light-colored stone blocks. A window with a white metal grille is visible in the lower center. Above it, a smaller window with blue bars is partially visible. To the right, an arched doorway leads into a darker interior. The text is overlaid in red on the left side of the image.

**Tomb of David
stone wall from 1st
century
(Jewish-Christian
synagogue?)**



Tomb of David



**“Tomb of David”
cenotaph (1Kg 2:10-12)**

KINGDOM of ISRAEL

A. United Kingdom

1Sam 1-1Kgs 11

1. Samuel

1Sam 1-8

2. Saul

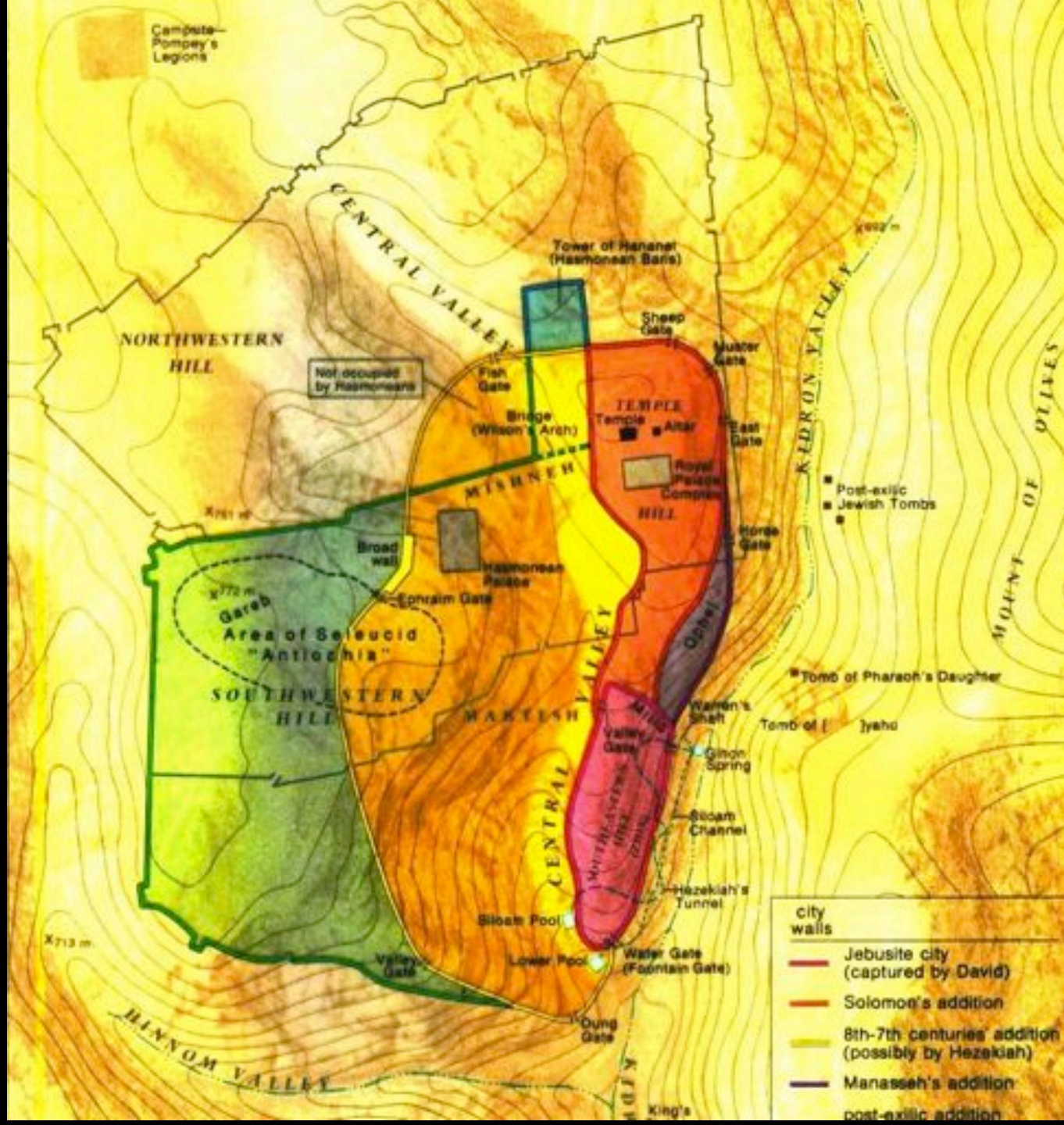
1Sam 9-15

3. David

1Sam 16-2Sam 24

4. Solomon

1Kgs 1-11





**Temple Mount
from Tomb of Pharaoh's Daughter**



**Herod's
Temple**





Temple Mount

KINGDOM - Foundation

1. Rooted in Creation Mandate - ruling
 2. Distinct Nation - Israel
 3. Godly King - David
 4. Security & Peace - in land
 5. Guaranteed by Covenant - Davidic
 6. Temple Presence of God - worship
 7. Great Blessing - Solomon
 8. Missionary Nation - to nations
- Temple Mount

Solomon

➤ His Greatness

Wisdom

Temple dedication

Golden era of Israel

➤ His Weakness

Women & Wine

Wealth & World

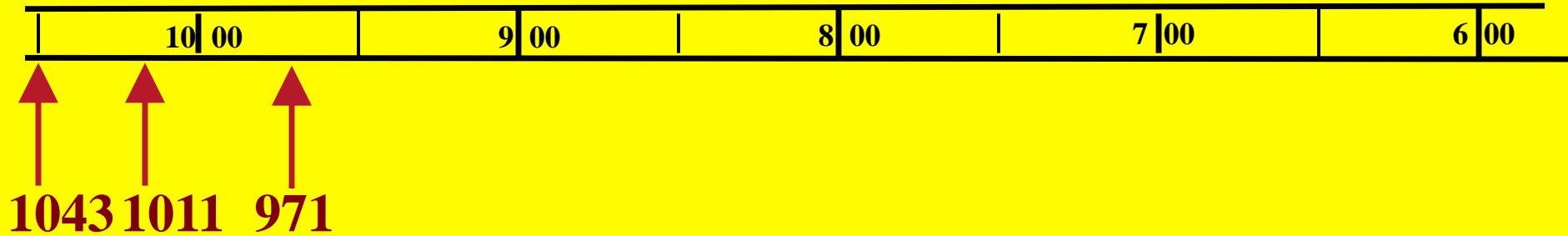




Kingdom of David & Solomon

KINGS CHRONOLOGY

Saul's Reign
David's Reign
Solomon's Reign



LIBERTY - Foundation

1. Created free - not bondage
2. Lost by sin - not culture
3. Distorted by selfishness - not God
4. Government oppression - not laws
5. Maintained by Word - not legalism
6. Lost by apostasy - not libertarianism
7. Damaged by sinful leaders - not by gov't
8. Restored by Messiah - not man

KINGDOM

1. Kingdom

is God's idea

2. Features

of Kingdom

3. Preview

**of Messianic
Kingdom**



KINGDOM - Millennium

- 1. Creation Mandate - curse partially lifted**
- 2. Distinct Nation - regenerated Israel**
- 3. Godly King - Sinless Messiah**
- 4. Security & Peace - Messiah ruling**
- 5. Guaranteed by Covenant - with David**
- 6. Temple Presence of God - full worship**
- 7. Great Blessing - Millennial blessing**
- 8. Missionary Nation - Israel leading**

Temple Mount

APOLOGETIC

**Biblical Wisdom superior to
man's wisdom**

WISDOM

- Available for all Life
- Available for all People
- Produces blessing
- Characteristics

CHARACTERISTICS



- **Practical Advice**
- **General Truth**
- **Moral Aspect**

A sunset scene over a body of water. The sun is a bright, glowing orb in the center of the horizon, with a long, shimmering reflection on the water's surface. The sky is filled with soft, golden clouds, and the water is dark with a bright path of light leading from the sun down to the foreground. The overall mood is serene and contemplative.

**How we live now
will determine our position in
the Messianic Kingdom!!!**

From Kursi