

CAUTION

This Class contains explicit BIBLICAL content. It contains graphic expressions of PRAYER. The language may not be suitable for visitors offended by non-profane references to JESUS. You are strongly cautioned that your flesh may be in serious danger.

ROMANS



Death to Sin -
6:1-3

Colosseum

Forum Arch of Severus, Temple of Saturn



THINKING -> **ACTING**

1. Fake News ->

sway votes

NEWSPAPERS

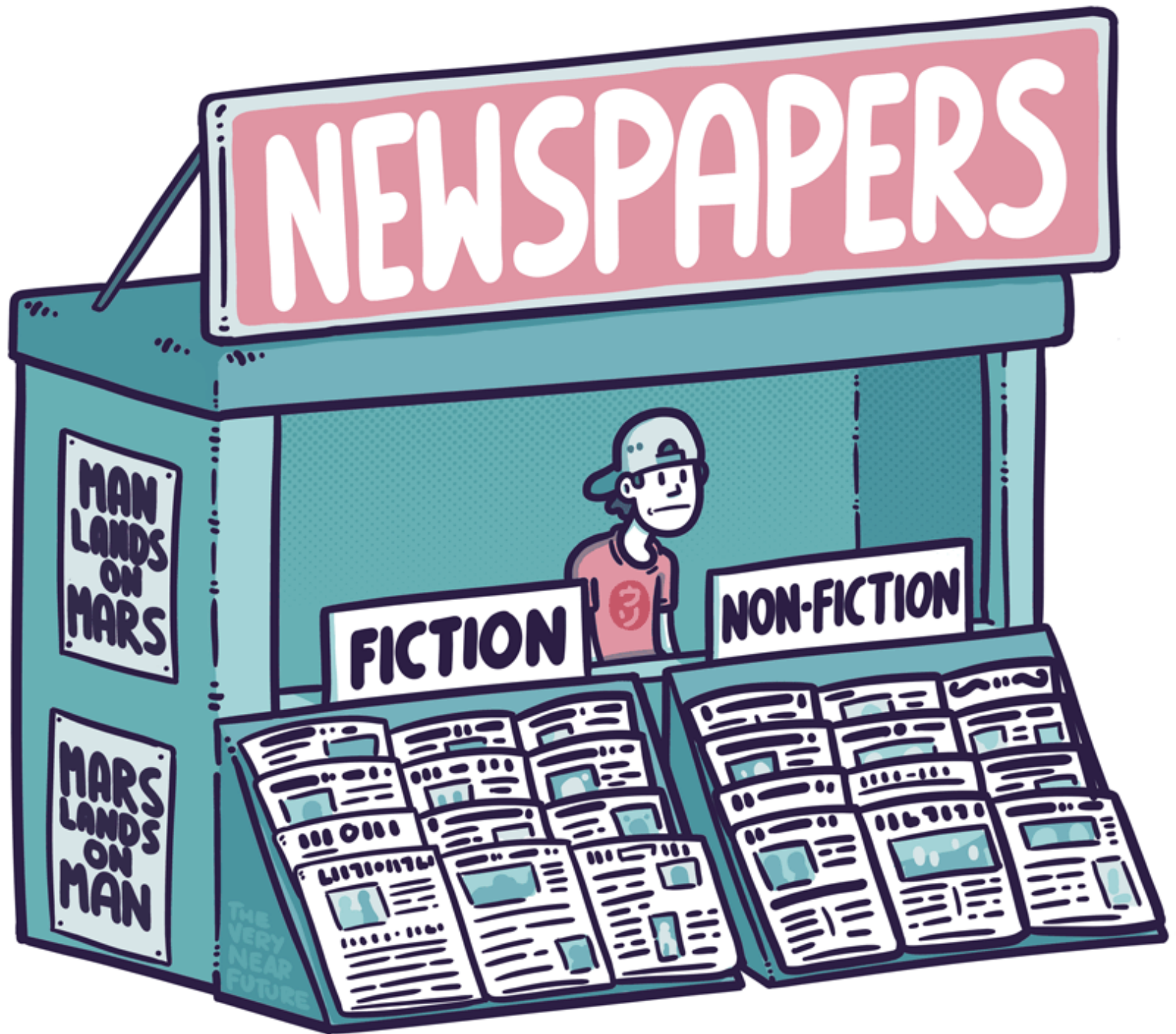
MAN
LANDS
ON
MARS

MARS
LANDS
ON
MAN

FICTION

NON-FICTION

THE
VERY
NEAR
FUTURE



THINKING ->

ACTING

1. Fake News ->

sway votes

2. Gossip ->

reputation

3. Money in bank ->

spend

4. Gas in tank ->

drive away

5. Athletic confidence ->

perform

6. New Creature ->

godly life

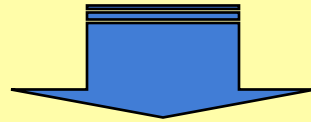
OUTLINE

- I. Introduction 1:1-17**
- II. Prov. of God's Righteousness 1:18-8:39**
 - A. Condemnation 1:18-3:20**
 - B. Justification 3:21-5:21**
 - C. Sanctification 6-8**

6:1 What shall we say then? Are we to continue in sin so that grace may increase?

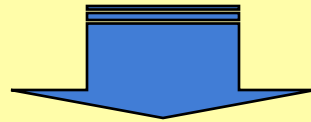
JUSTIFICATION

3:21-5:21



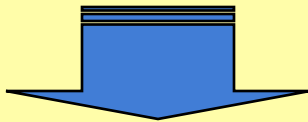
SANCTIFICATION

6-8



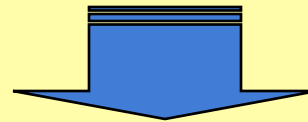
6

PRINCIPLES



7

PROBLEMS



8

POWER

OUTLINE

C. Sanctification	6-8
1. Principles	6
a. Identification with Christ	6:1-14
1) Explanation of Doctrine	6:1-10
a) Issue Raised	6:1-2

6:1 What shall we say then? Are we to continue in sin so that grace may increase?

CONTINUE IN SIN

1. Continue - **ΕΠΙΜΕΝΩ** (epimeno)
to remain in a place, persist
2. Sin - **τη ἁμαρτία** (te hamartia)
5:20-8:3 - “sin” in singular
with article 25x
-> “the” sin or sin nature from Adam

SIN KILLS



6:1-2 What shall we say then? Are we to continue in sin so that grace may increase? **2** **May it never be!** How shall we who died to sin still live in it?

REASONS TO NOT SIN

- 1. It is wrong**
- 2. God will not bless you**
- 3. It does damage**
- 4. God will discipline**
- 5. It will damage conscience**
- 6. It undermines our testimony**
- 7. It forfeits future rewards**
- 8. Paul - contradicts identity in Christ**

6:1-2 What shall we say then? Are we to continue in (the) sin so that grace may increase? 2 May it never be! How shall we **who died to (the) sin** still live in it?

6:2

Death to Sin

Answer

6:3

United to Christ

Principle

6:4

“Therefore ...”

(οὐν)

**United to
Resurrection**

Significance

6:5-10

“For if ...”

(εἰ γαρ)

**Co-crucifixion
Co-resurrection**

Explanation

6:11

“Even so ...”

(οὕτως και)

Trust Reality

Application

6:1-2 What shall we say then? Are we to continue in sin so that grace may increase? 2 May it never be! **How shall we who died to (the) sin still live in it?**

CONTINUE IN SIN

1. Continue - **ΕΠΙΜΕΝΩ** (epimeno)
to remain in a place, persist
2. Sin - **τη ἁμαρτία** (te hamartia)
5:20-8:3 - “sin” in singular
with article 25x
-> “the” sin or sin nature from Adam
3. Inconsistent with who we are
4. Contrary to our new nature

SIN KILLS



TERMS - DEATH

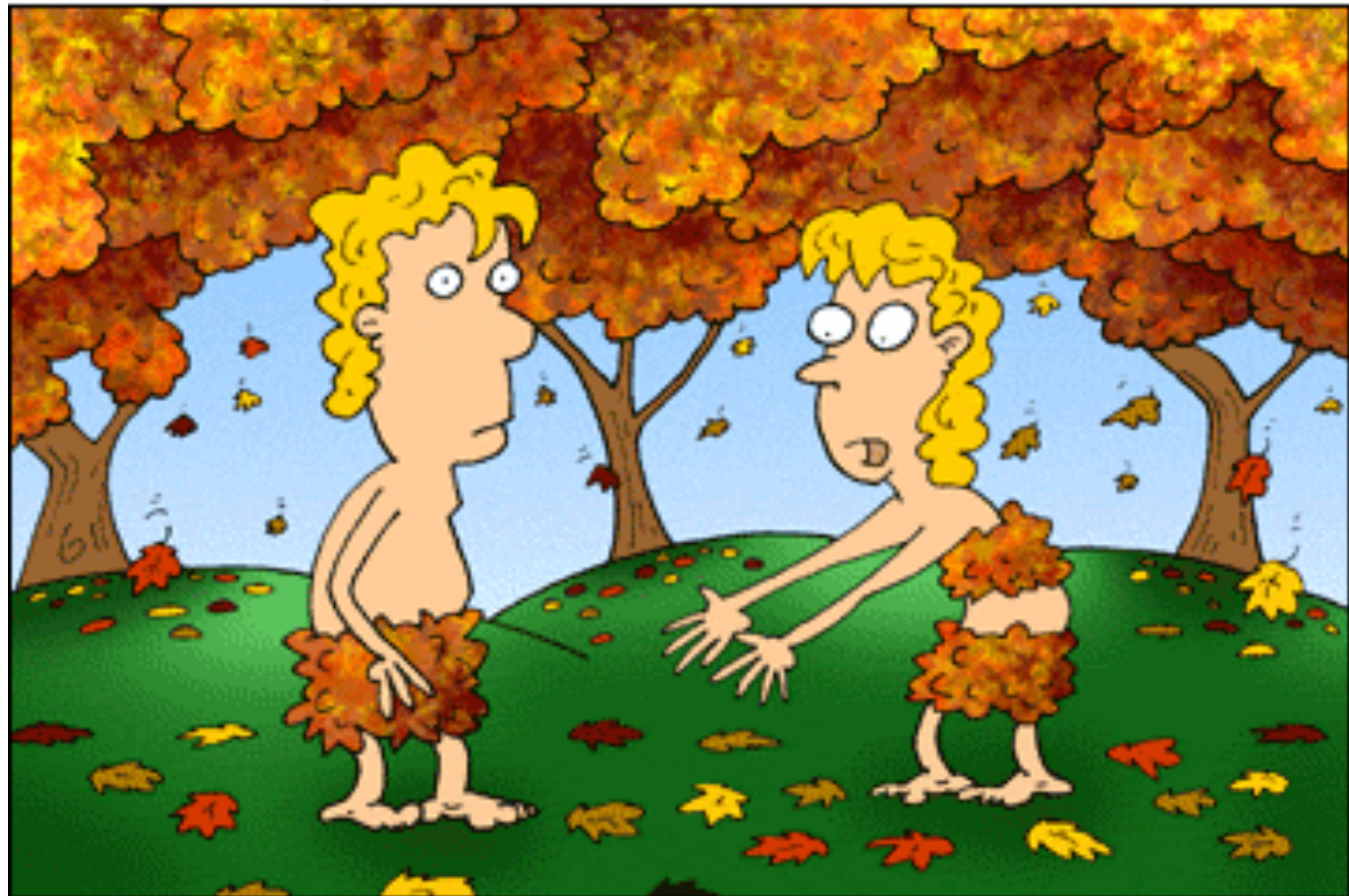
1. αποθνησκω (apothnesko) -
to die 6:2, 7-10
2. θανατος (thanatos) - death
6:3-5
3. νεκρος (nekros) - dead
6:4, 9

DEATH

- 1. Physical Death - body separation**
- 2. 2nd Death - eternal separation**
- 3. Comprehensive Spiritual Death -
involves whole person**

DEATH

1. **Spiritual (7-9) - separation**
2. **Intellectual (7) - darkened**
3. **Moral - shame**
4. **Emotional (10) - fear**
5. **Social (11-12) - blame**



10-06-2006

WILL YOU PLEASE PICK UP ALL YOUR CLOTHES?

DEATH

1. **Spiritual (7-9) - separation**
2. **Intellectual (7) - darkened**
3. **Moral - shame**
4. **Emotional (10) - fear**
5. **Social (11-12) - blame**
6. **Purpose (17-18) - damaged**
7. **Physical (19) - pain & death**

KEY TERMS

- **Sanctification** - set apart for purpose
- **Death** - comprehensive separation

PRINCIPLES

1. Grace Available

2. Death to Sin is new Reality



OUTLINE

C. Sanctification	6-8
1. Principles	6
a. Identification with Christ	6:1-14
1) Explanation of Doctrine	6:1-10
a) Issue Raised	6:1-2
b) Uniting with Christ	6:3-4

6:3 Or do you not know that all of us who have been baptized into Christ Jesus have been baptized into His death?

Sea of Galilee

**Becoming a NEW
CREATION makes
Sanctification possible???**