

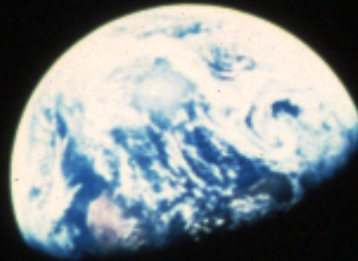


SCIENCE &

SCRIPTURE

INTELLIGENT DESIGN

1. Introduction



In the beginning God created
the heavens and the earth.

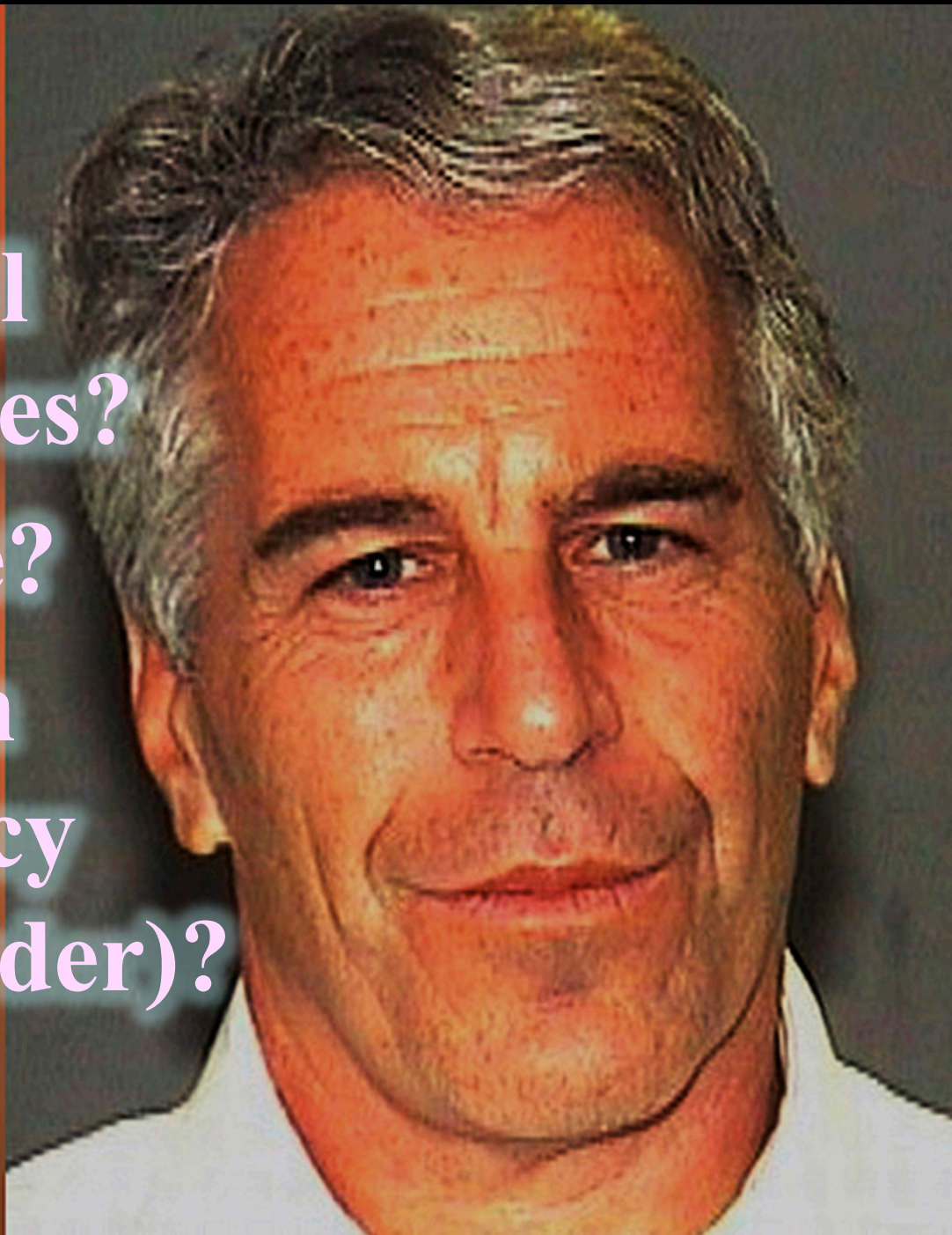
Gen 1:1



✓ Natural
Causes?

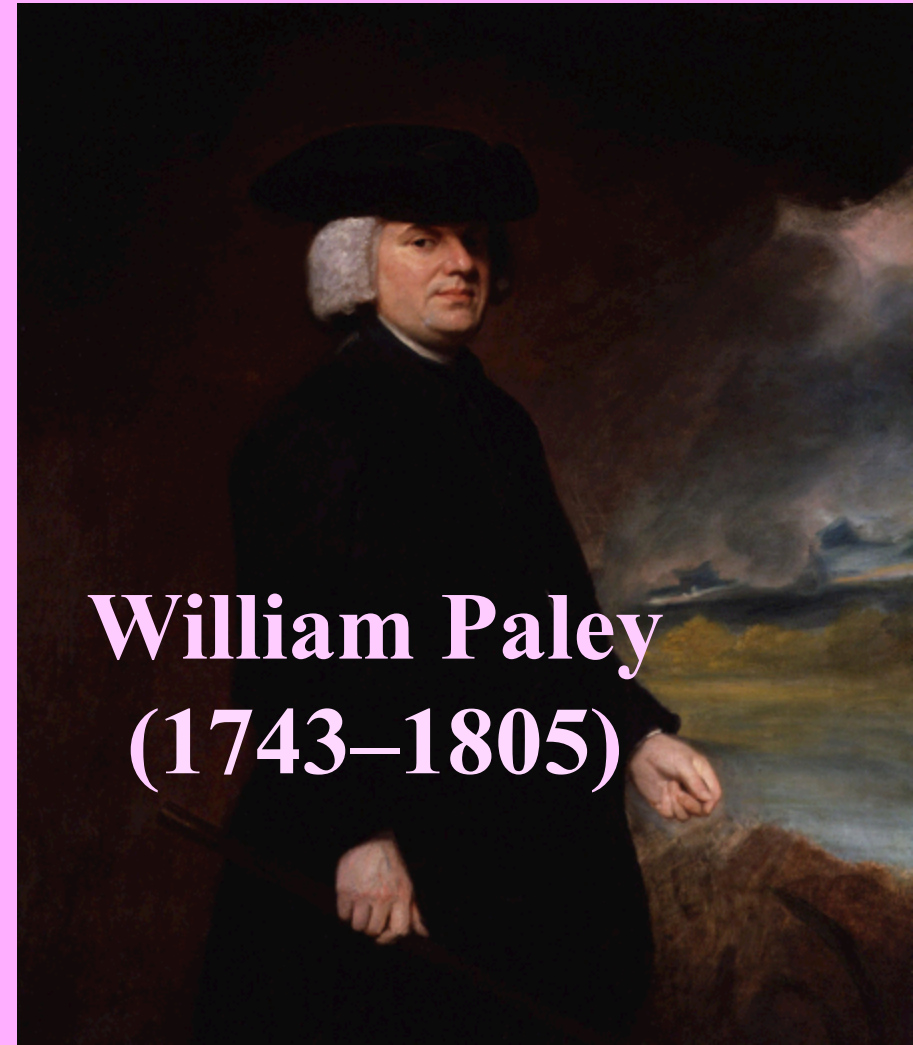
✓ Suicide?

✓ Human
agency
(murder)?



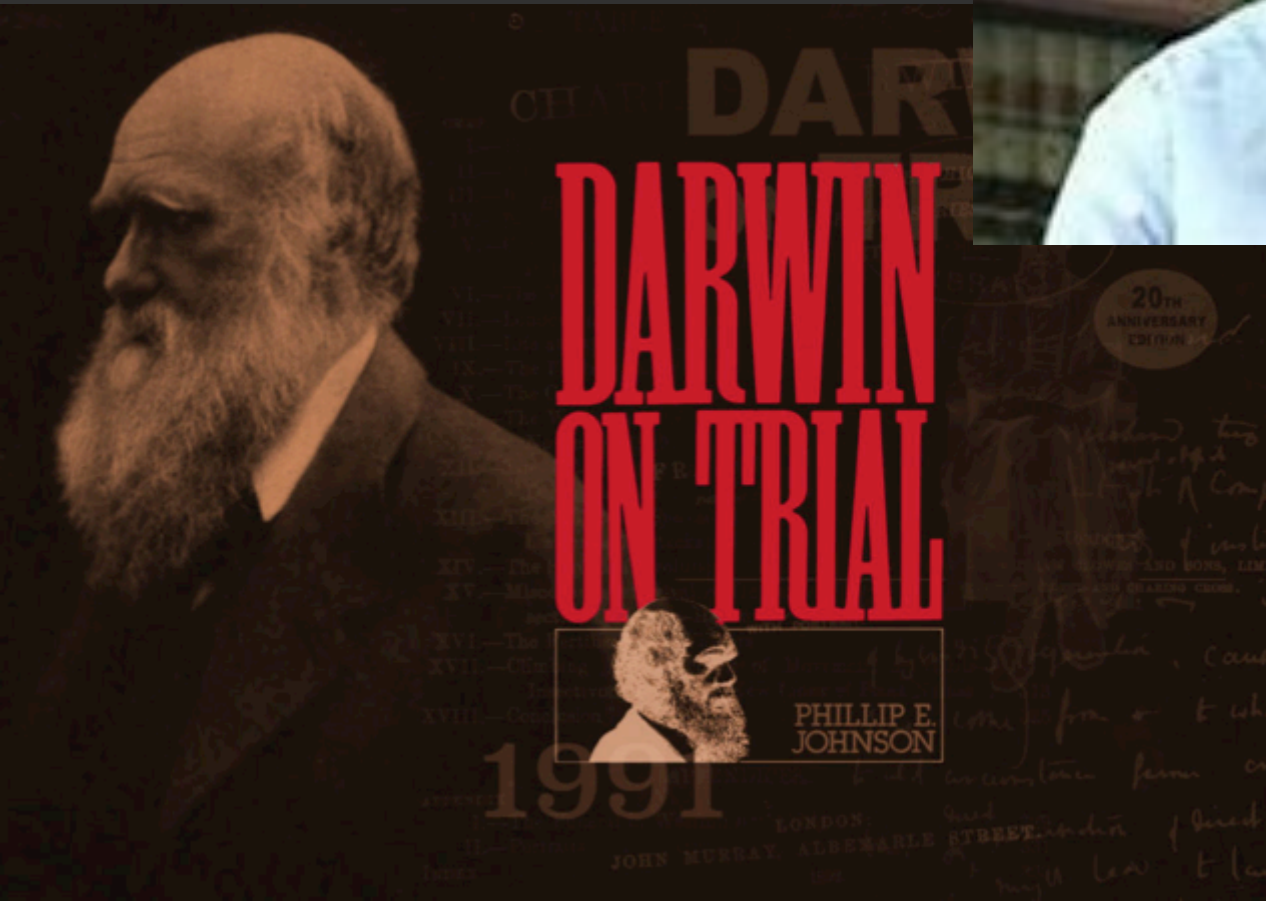
HISTORY

1. Origin



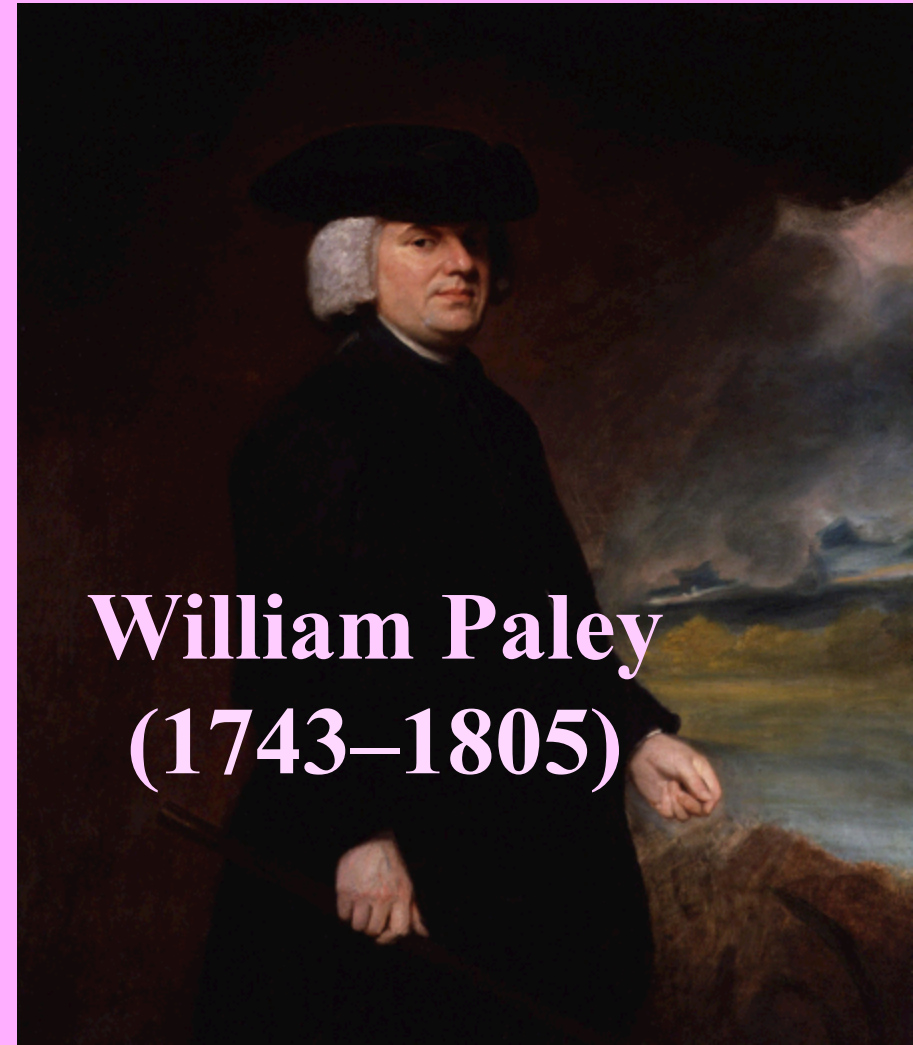
**William Paley
(1743–1805)**

Philip E. Johnson



HISTORY

1. **Origin**
2. **1st meeting - 1992**
3. **Center for Science & Culture**
4. **Wedge Strategy**
5. **Court Cases**
6. **Publications/Videos**
7. **Local Groups**
8. **Proponents**



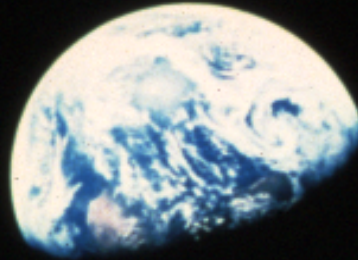
**William Paley
(1743–1805)**

PROPONENTS

- ✓ Philip Johnson
- ✓ Charles Thaxton
- ✓ Wm Dembski
- ✓ Michael Behe
- ✓ Stephen Meyer
- ✓ Bruce Chapman
- ✓ Jonathan Wells
- ✓ Walter Bradley

INTELLIGENT DESIGN

- 1. Introduction**
- 2. Fundamentals**
 - a. Kinds**



How do Ordered Structures Arise?



Natural Order





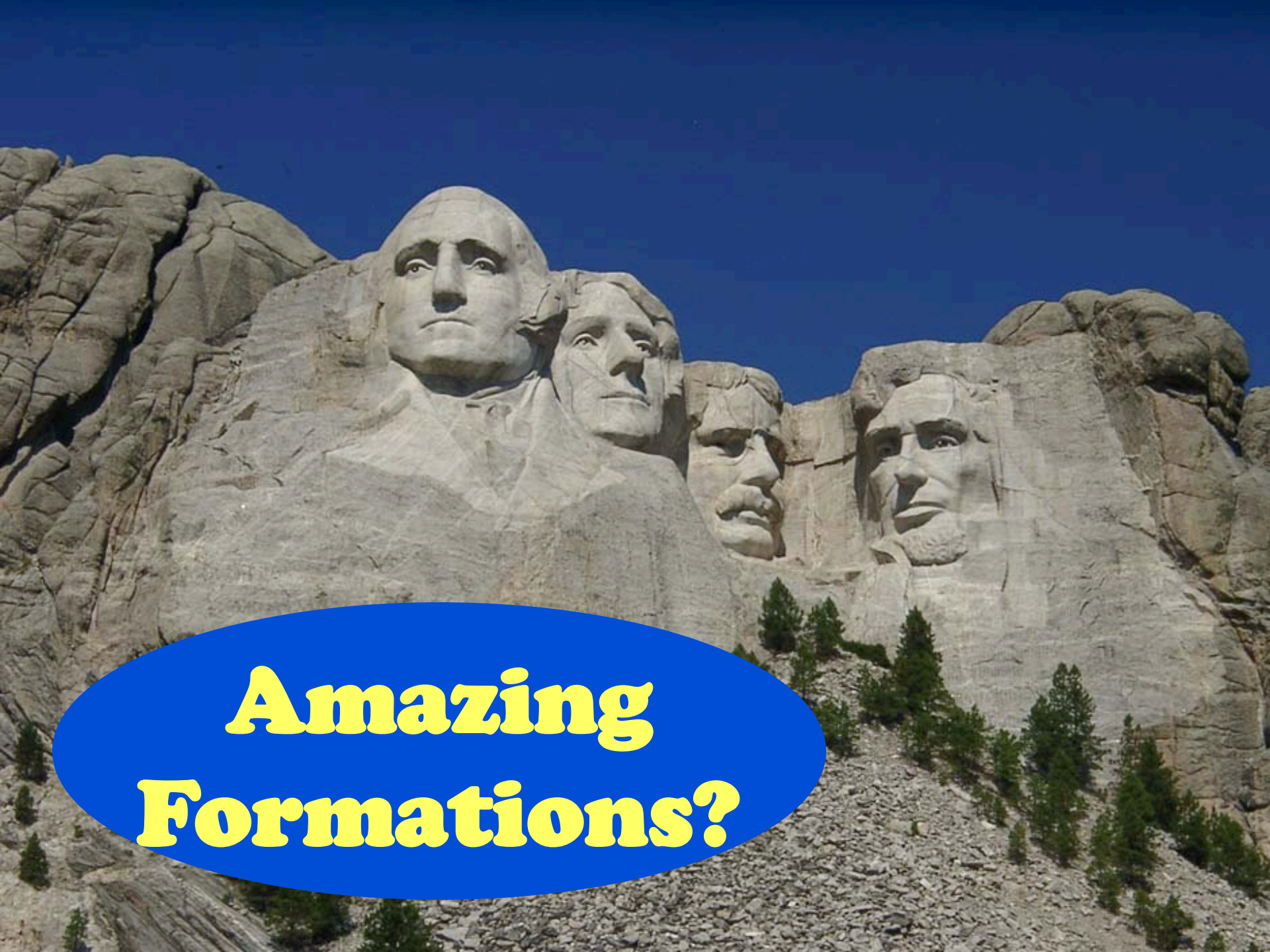
Camel Rock



SPECIFIED COMPLEXITY



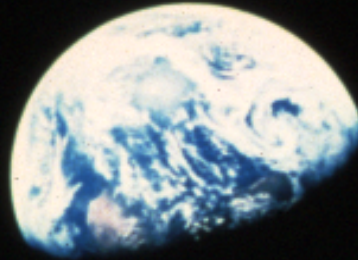




**Amazing
Formations?**

INTELLIGENT DESIGN

- 1. Introduction**
- 2. Fundamentals**
 - a. Kinds**
 - b. Nature**





**“The principal
characteristic of
intelligent
causation is
CHOICE”**

Wm Dembski

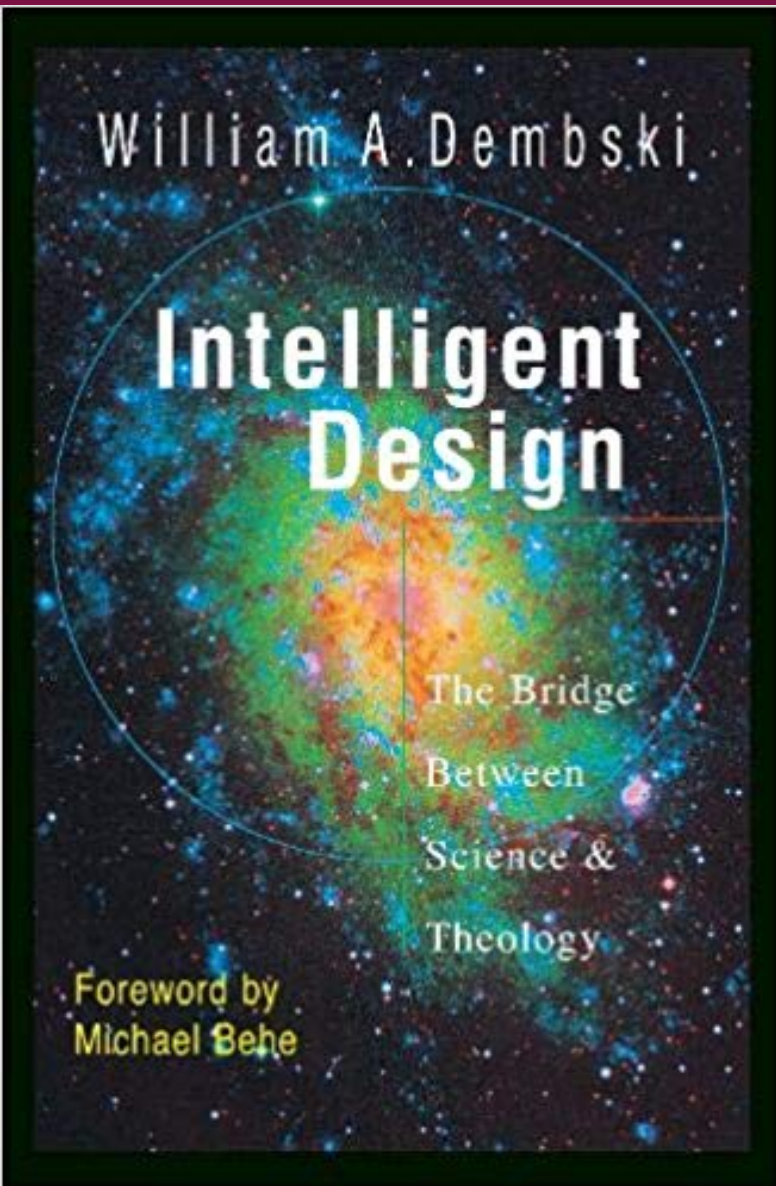


**“Intelligent
design thereby
becomes a theory
for detecting &
measuring
information”**



**“Intelligent
design is
theologically
minimalist.”**

DEFINITION



“... intelligent design consists in empirically detecting design and then reverse engineering those objects detected to be designed.”

INTELLIGENT DESIGN

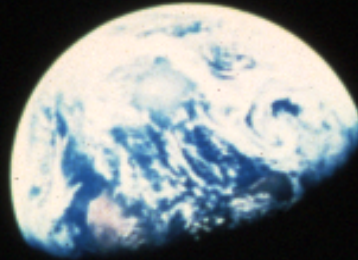
1. Introduction

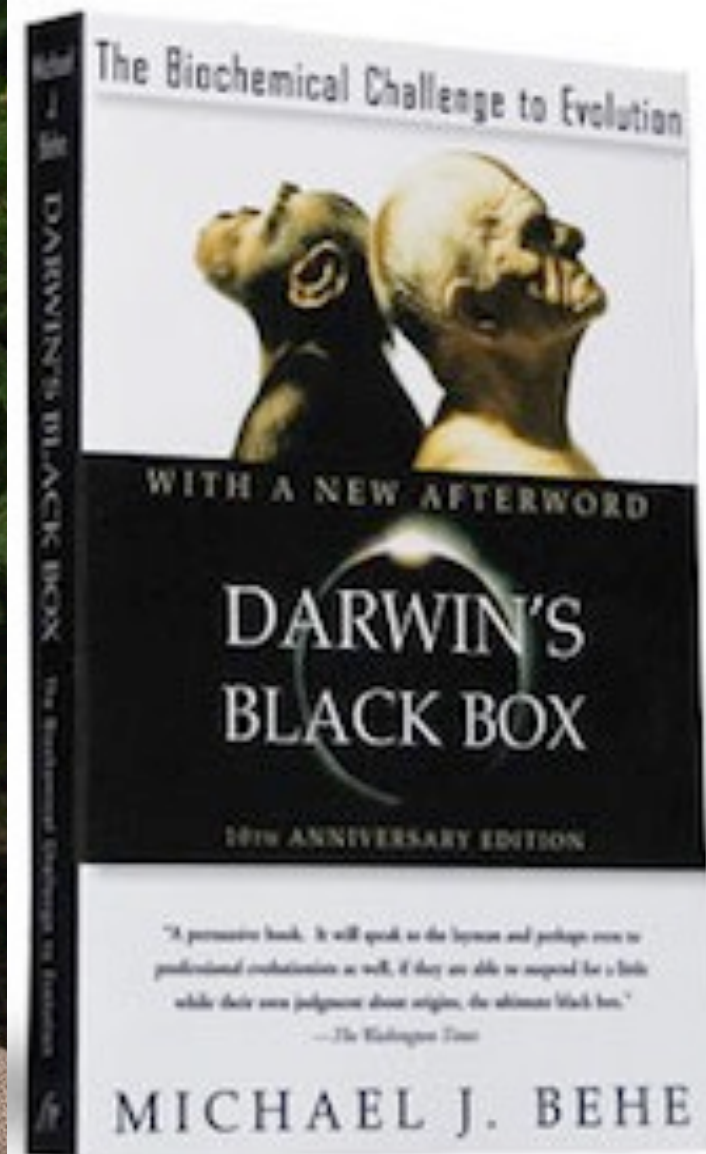
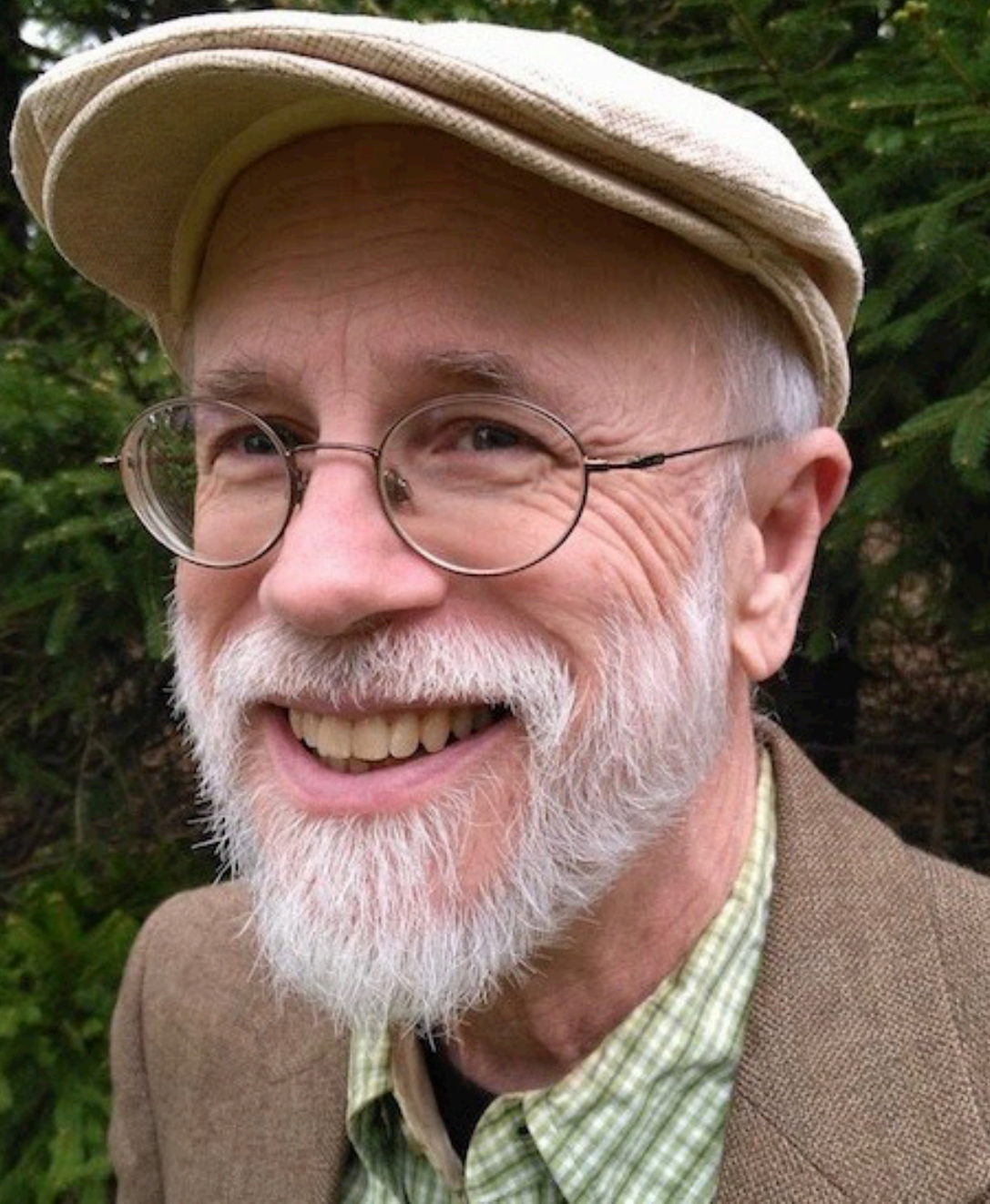
2. Fundamentals

a. Kinds

b. Nature

c. Irreducible Complexity

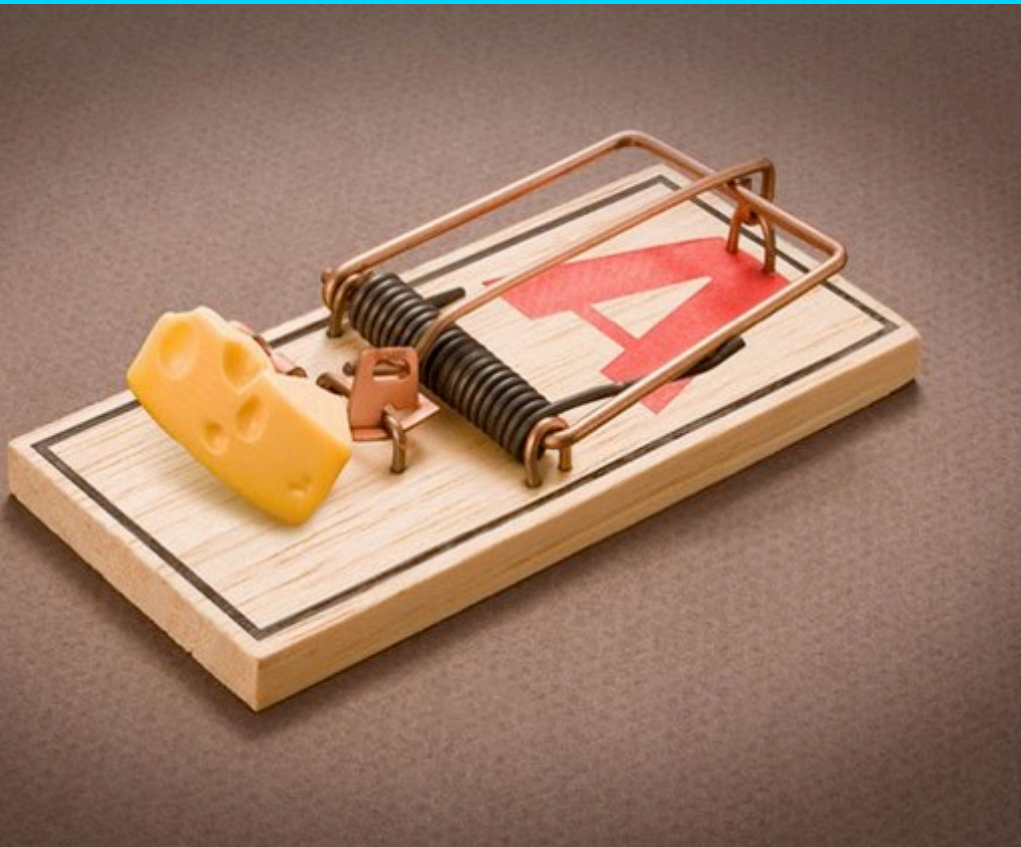




“By irreducible complexity I mean a single system composed of several well-matched, interacting parts that contribute to the basic function, wherein the removal of any one of the parts causes the system to effectively cease functioning.”

M. Behe

IRREDUCIBLE COMPLEXITY



- ✓ Base
- ✓ Holding Bar
- ✓ Spring
- ✓ Hammer
- ✓ Catch

Michael Behe

INTELLIGENT DESIGN

1. Introduction

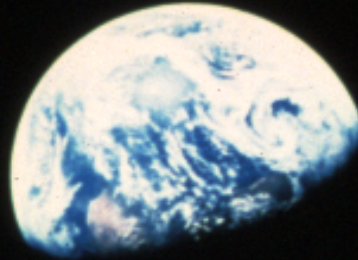
2. Fundamentals

a. Kinds

b. Nature

c. Irreducible Complexity

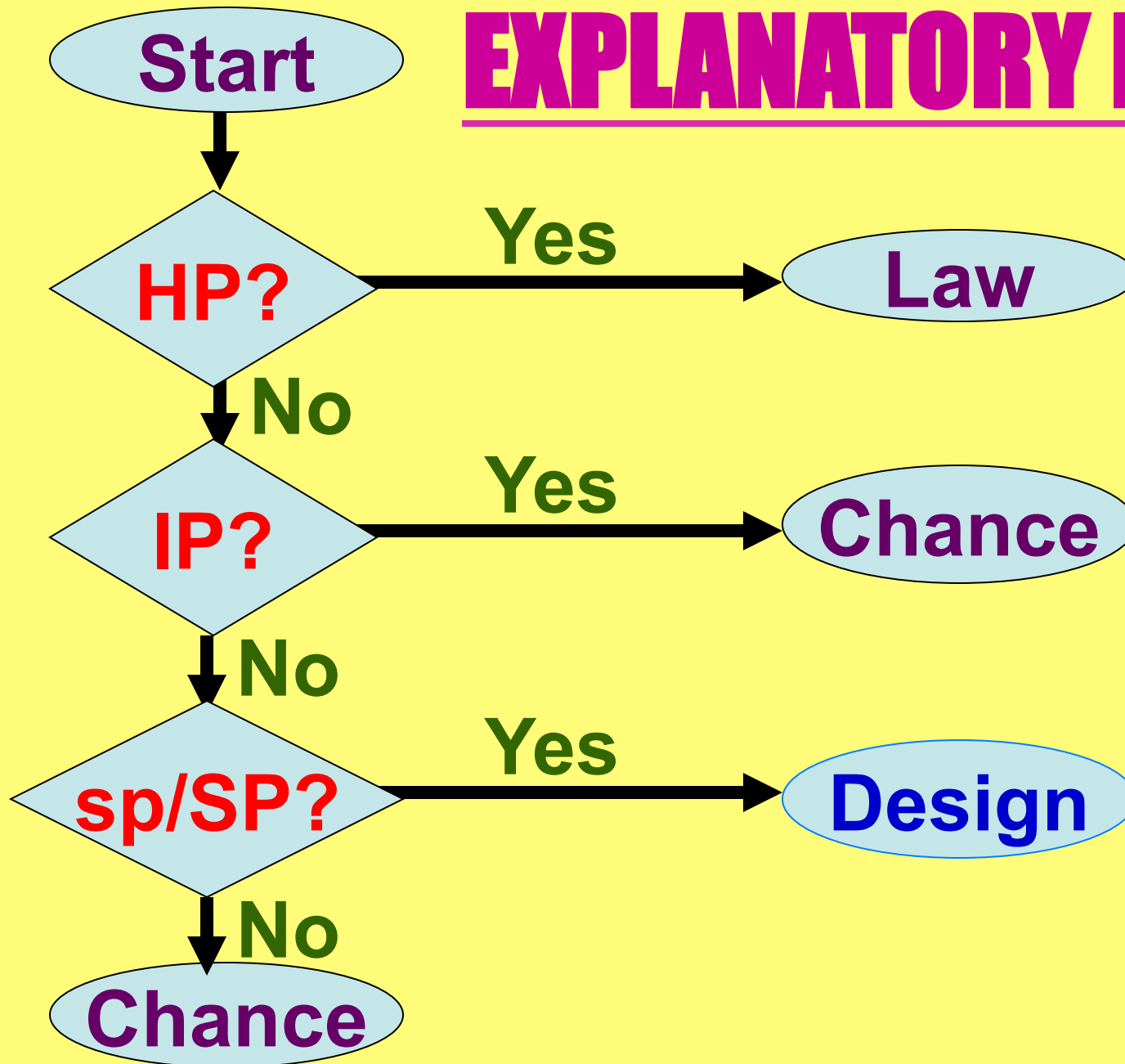
d. Explanatory Filter



EXPLANATORY FILTER

- 1. Does Natural Law Explain?**
- 2. Does Chance Explain?**
- 3. Does Design Explain?**

EXPLANATORY FILTER



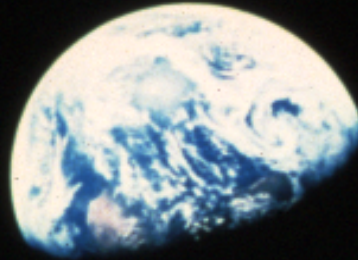
**What is
cause?**



**Natural?
Chance?
Human?
(not so intelligent)**

INTELLIGENT DESIGN

- 1. Introduction**
- 2. Fundamentals**
- 3. Scientific Examples**



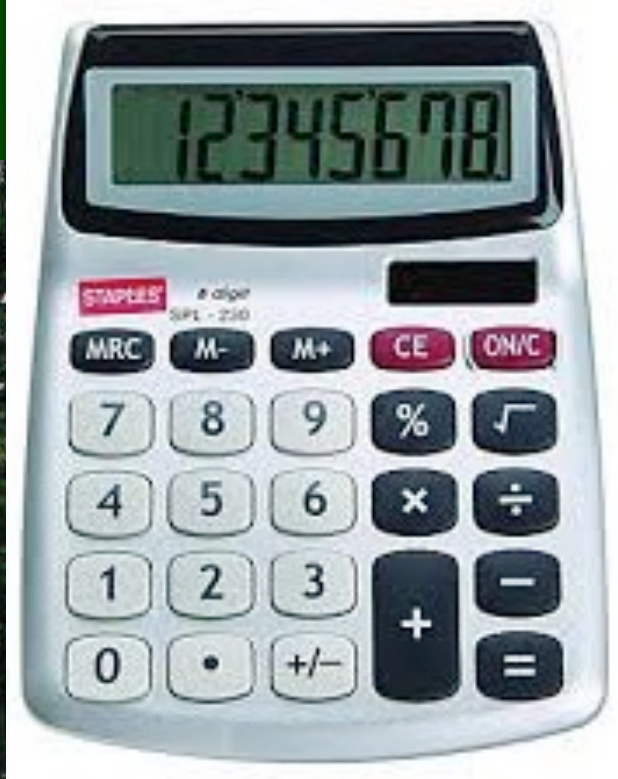
EVIDENCE from

Biology & Genetics

“In whose hand is the life of every living thing, & the breath of all mankind?”

Job 12:10

Embryology, etc

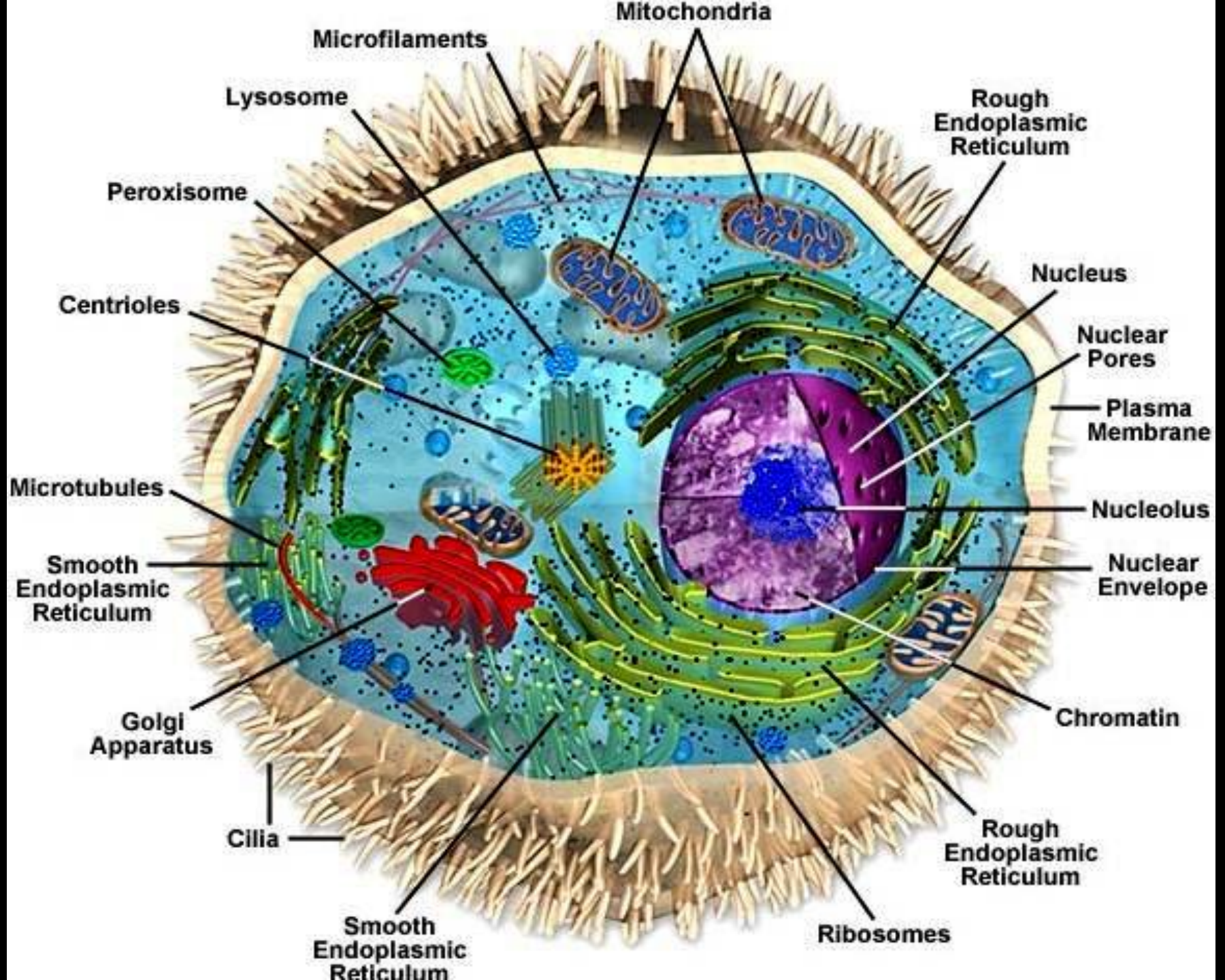




Genetics

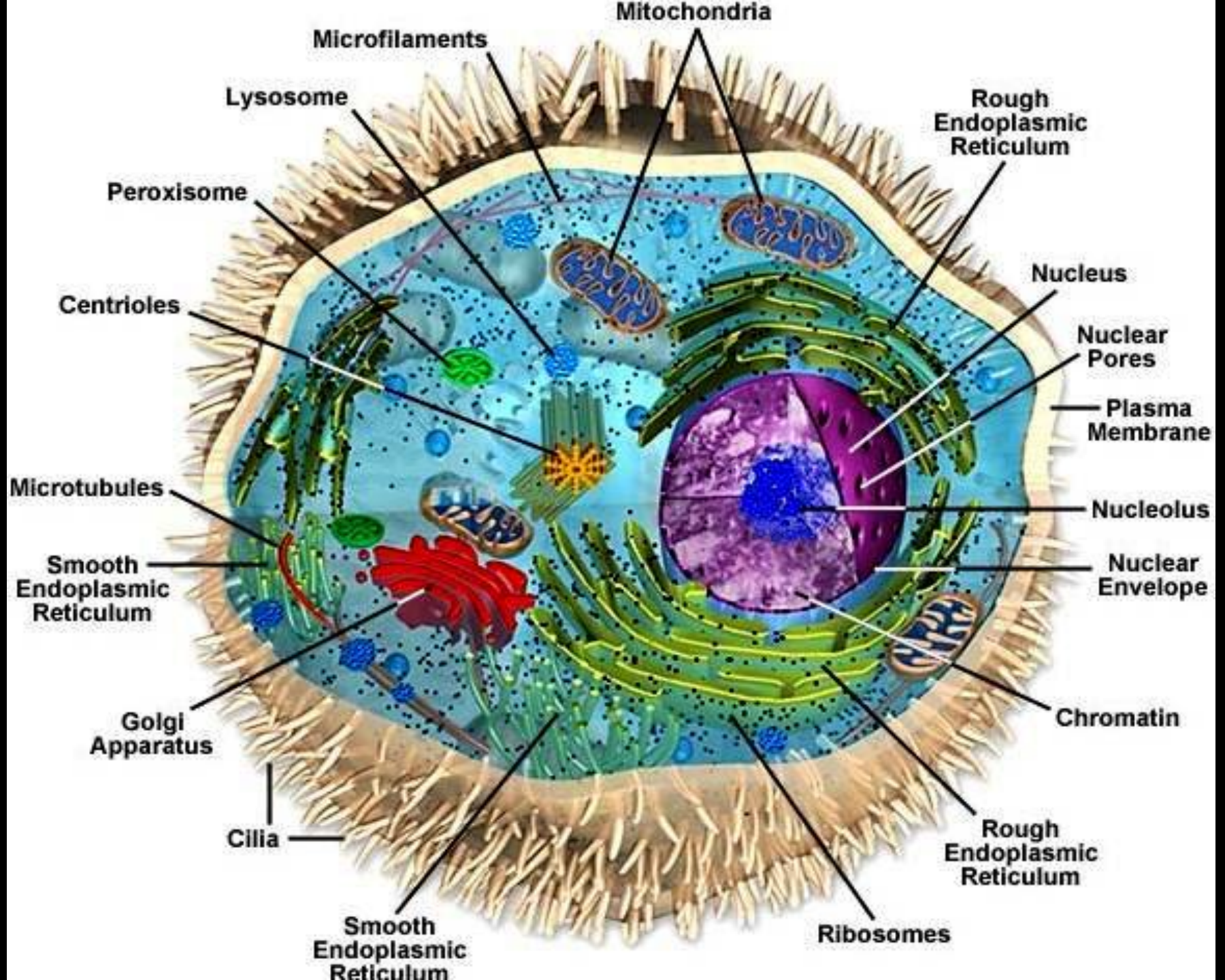
Evidence of Design

Evolution - Life began in Simple Form



1 CELL

- ✓ **DNA**
- ✓ **RNA**
- ✓ **Mitochondrion**
- ✓ **ATP**
- ✓ **Polysaccharides**
- ✓ **Cyclic AMP**
- ✓ **Ribosomes**
- ✓ **Lysosomes**
- ✓ **Lipids**
- ✓ **Porphyrins**
- ✓ **Proteins**
- ✓ **Amino Acids**



“The cumulative result shows with piercing clarity that life is based on ***machines***—machines made of molecules!”

Michael Behe

“Molecular biology has shown that even the simplest of all living systems on earth today, bacterial cells, are exceedingly **complex objects. ... far **more complicated** than anything built by man ...”**

Michael Denton

CONCLUSION

➤ Evolution -

Positive Evidence is Superficial

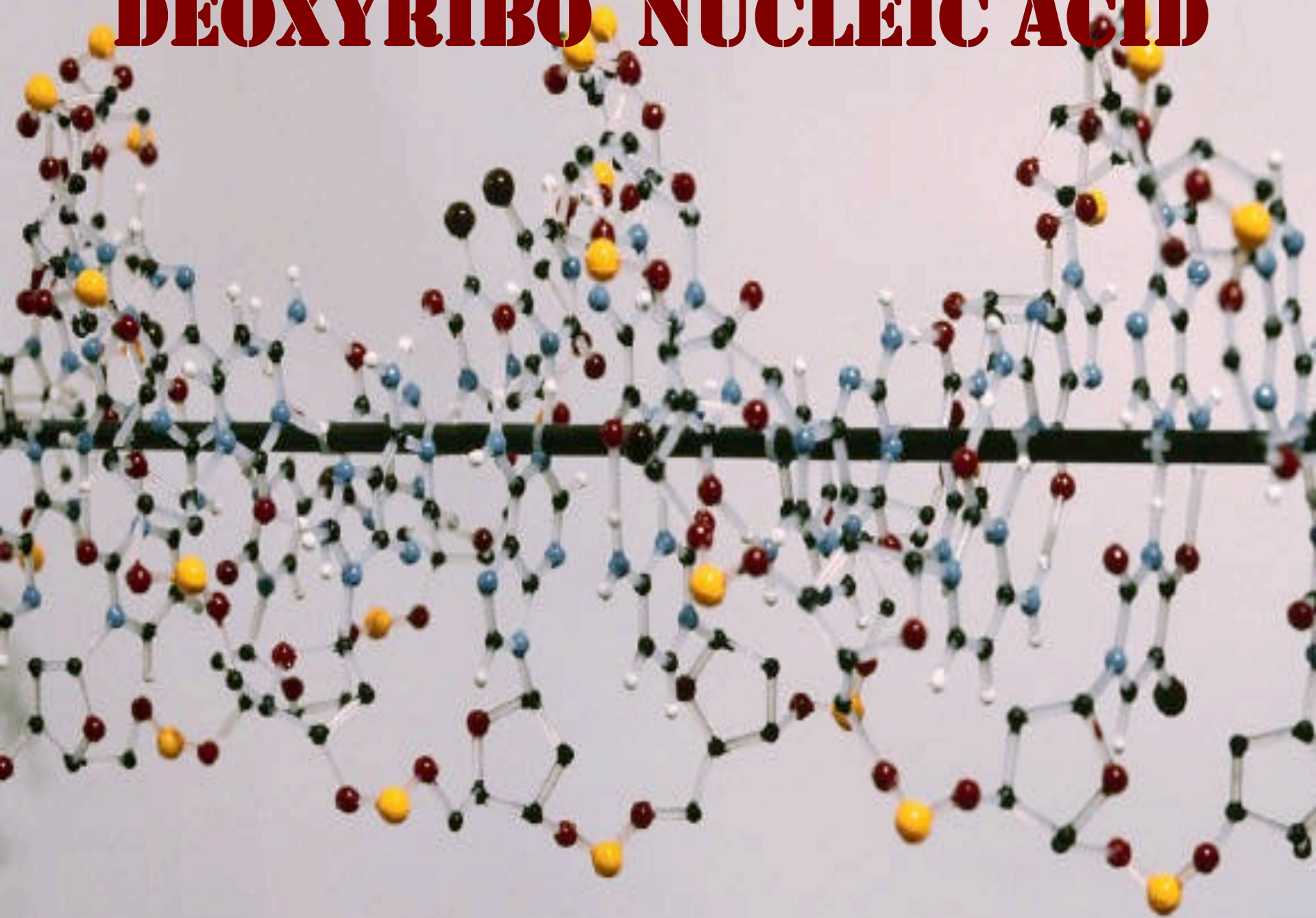
Real Science Destroys Theory

➤ Creation –

Science Supports Intelligent Design

Science Supports Biblical Worldview

DEOXYRIBO NUCLEIC ACID

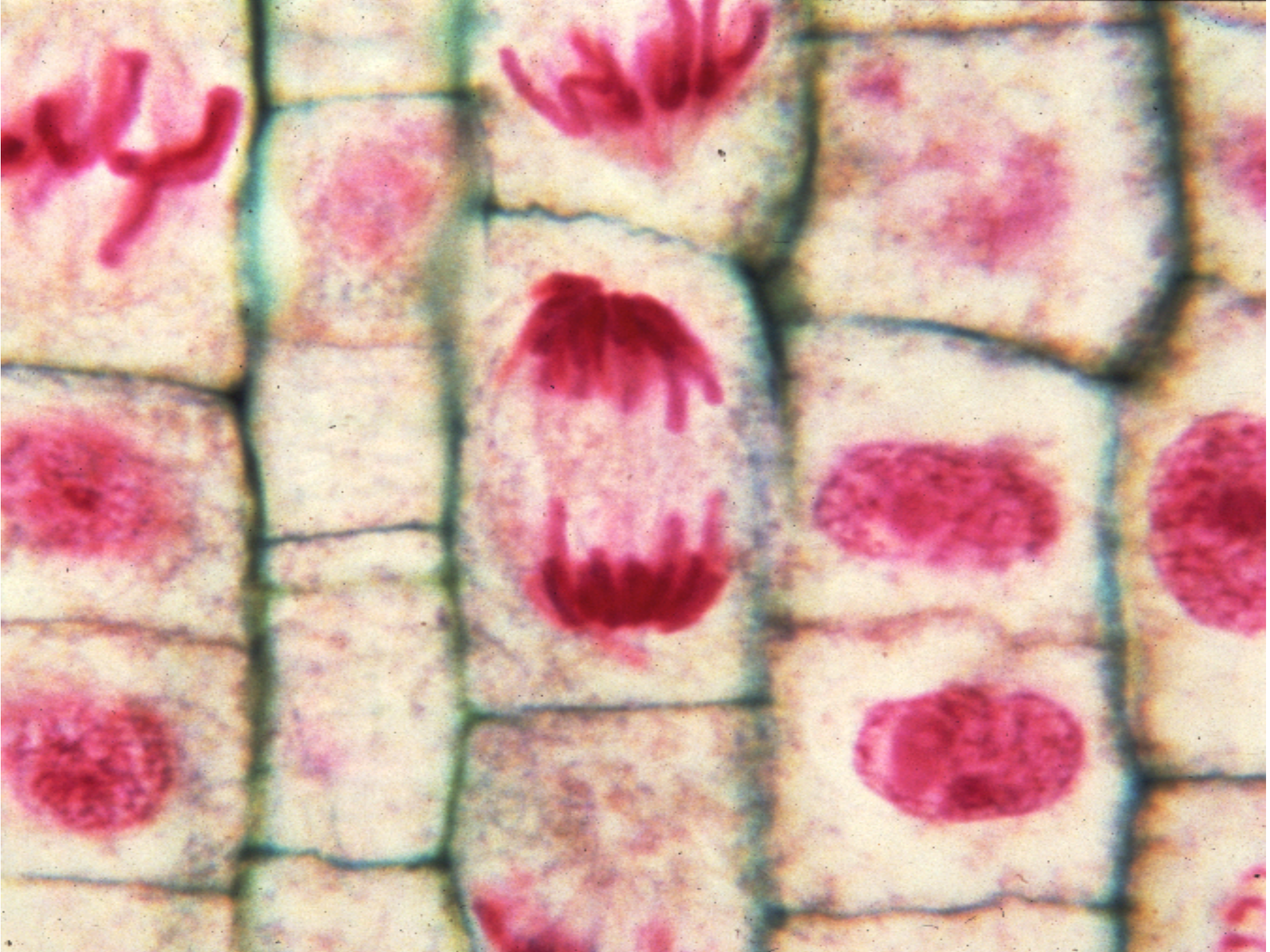


DNA



- **Double Helix Chains**
- **Library in Molecule**
- **All Characteristics**

- **More Info Stored
than any Other
Known System**

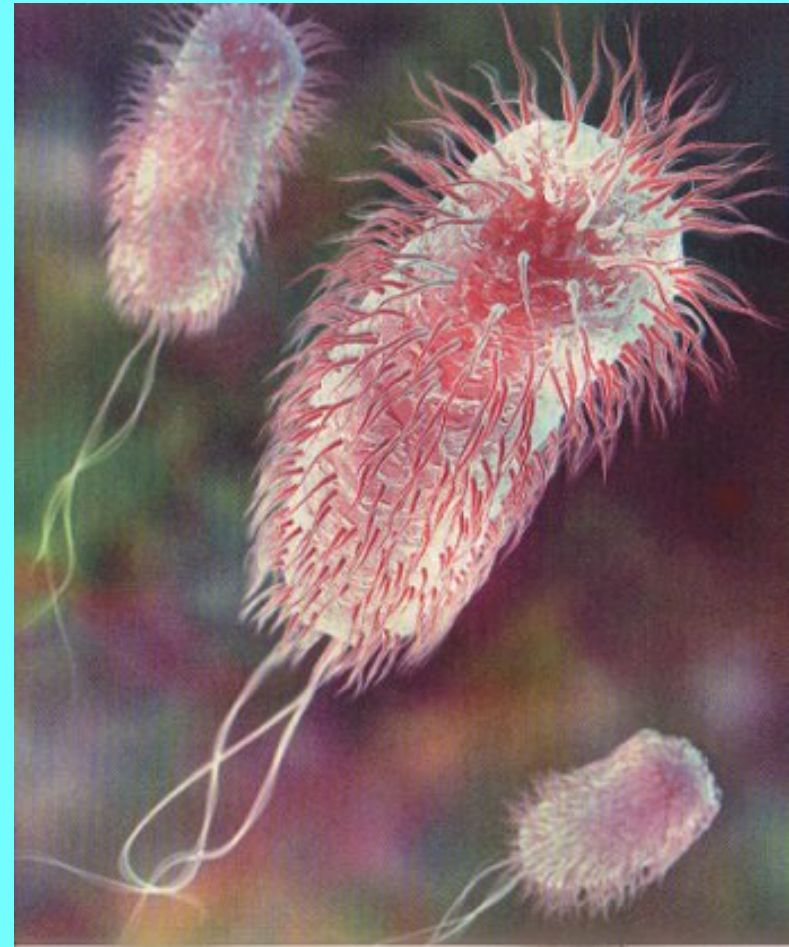


DNA LIBRARY

Escherichia coli - ~ 3 million

3-letter codons

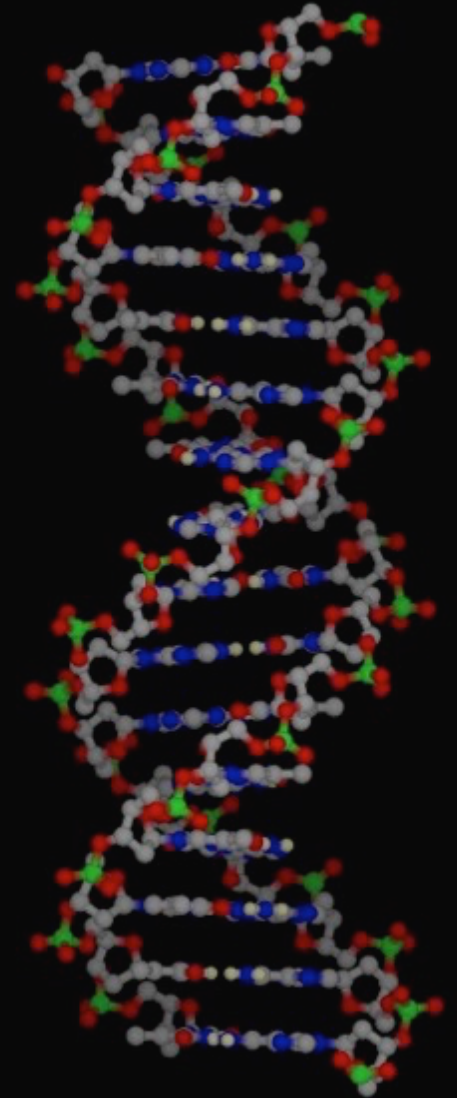
**= 3 volumes of
1,000 pages at
1,000 words/page**



DNA LIBRARY

Human - ~ 2 billion
3-letter codons

= 2,000 volumes of
1,000 pages at
1,000 words/page



Complexity Everywhere



**2-3,000
Eggs/Day**



**Colony = 1 Queen &
60,000 Workers**



WORKERS

1. Sanitation

2. Dietician



3. Manufacturing

4. Construction

5. Security

6. R & D

INTELLIGENT DESIGN

At All
Levels
Everywhere



HUMAN BODY

➤ **12 Billion
Brain Cells**



➤ **10 Trillion
Body Cells**

HUMAN EYE



**Sensitive to 6
Quanta of Light**

ANTHROPOCENTRIC PRINCIPLE

“... everything about the universe tends toward man, toward making life possible and sustaining it.”

H. Ross

The PRIVILEGED PLANET

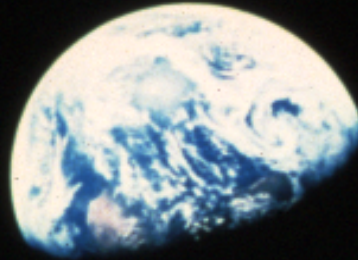


HOW OUR PLACE IN
THE COSMOS IS DESIGNED
FOR DISCOVERY

GUILLERMO GONZALEZ AND JAY W. RICHARDS

INTELLIGENT DESIGN

- 1. Introduction**
- 2. Fundamentals**
- 3. Scientific Examples**
- 4. Value of I. D.**



AREAS IN COMMON

- 1. Rejection of Evolution**
- 2. Need for Scientific View**
- 3. Evidence of Design**



DISAGREEMENT



1. View on Designer

**2. Views on
Scripture**

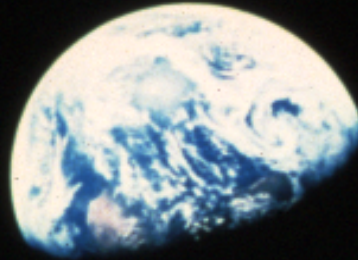
3. Age of Earth view

4. Local Flood view

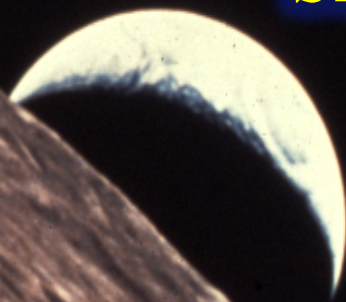
5. Political Activism

INTELLIGENT DESIGN

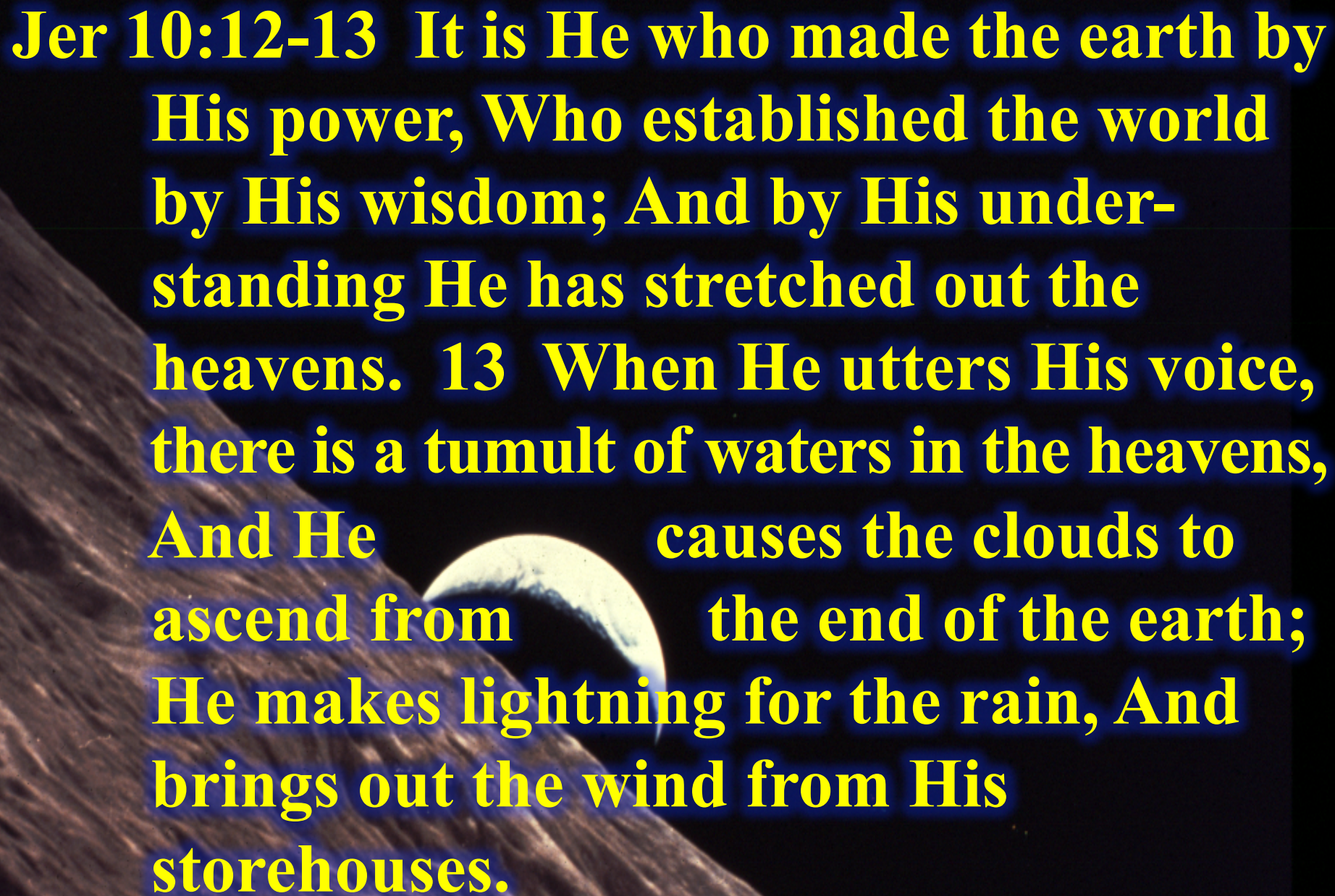
- 1. Introduction**
- 2. Fundamentals**
- 3. Scientific Examples**
- 4. Value of I. D.**
- 5. Conclusion**



**Prov 3:19-20 The Lord by wisdom
founded the earth; By
understanding He established the
heavens. By His knowledge the
deeps were broken up, And the
skies drip with dew.**



Jer 10:12-13 It is He who made the earth by His power, Who established the world by His wisdom; And by His understanding He has stretched out the heavens. 13 When He utters His voice, there is a tumult of waters in the heavens, And He causes the clouds to ascend from the end of the earth; He makes lightning for the rain, And brings out the wind from His storehouses.



Col 1:16-17 For by Him all things were created, both in the heavens and on earth, visible & invisible, whether thrones or dominions or rulers or authorities—all things have been created through Him and for Him. 17 He is before all things, and in Him all things hold together.

