

SCIENCE &

SCRIPTURE

In the beginning God created
the heavens and the earth.

Gen 1:1



INTRODUCTION

I. Introduction

II. Conflict of Worldviews

III. Implications

CREATION science

INTRODUCTION

I. Introduction

A. Culture

CREATION science

WORLDVIEWS?

- ✓ All State Universities
- ✓ All Public Schools
- ✓ News Media
- ✓ Governments
- ✓ Christian Schools
- ✓ Seminaries
- ✓ Churches
- ✓ Sciences



“One of the most important influences shaping the modern world is **science. People who lived during the Civil War had more in common with Abraham than with us. From DNA research and space travel to computer science and neurophysiology, ours is a **world of science**.”**

(JP Moreland & Jn Mk Reynolds)

ESSENCE

- **God Is Creator**
- **God Is Revealer**



**Unity between
True Science & Scripture**

INTRODUCTION

I. Introduction

A. Culture

B. Presuppositions

CREATION science

PRESUPPOSITIONS

- **God Exists**
- **Non-Material Realm**
- **God Has Revealed**
- **God's Word Is Inspired**

INTRODUCTION

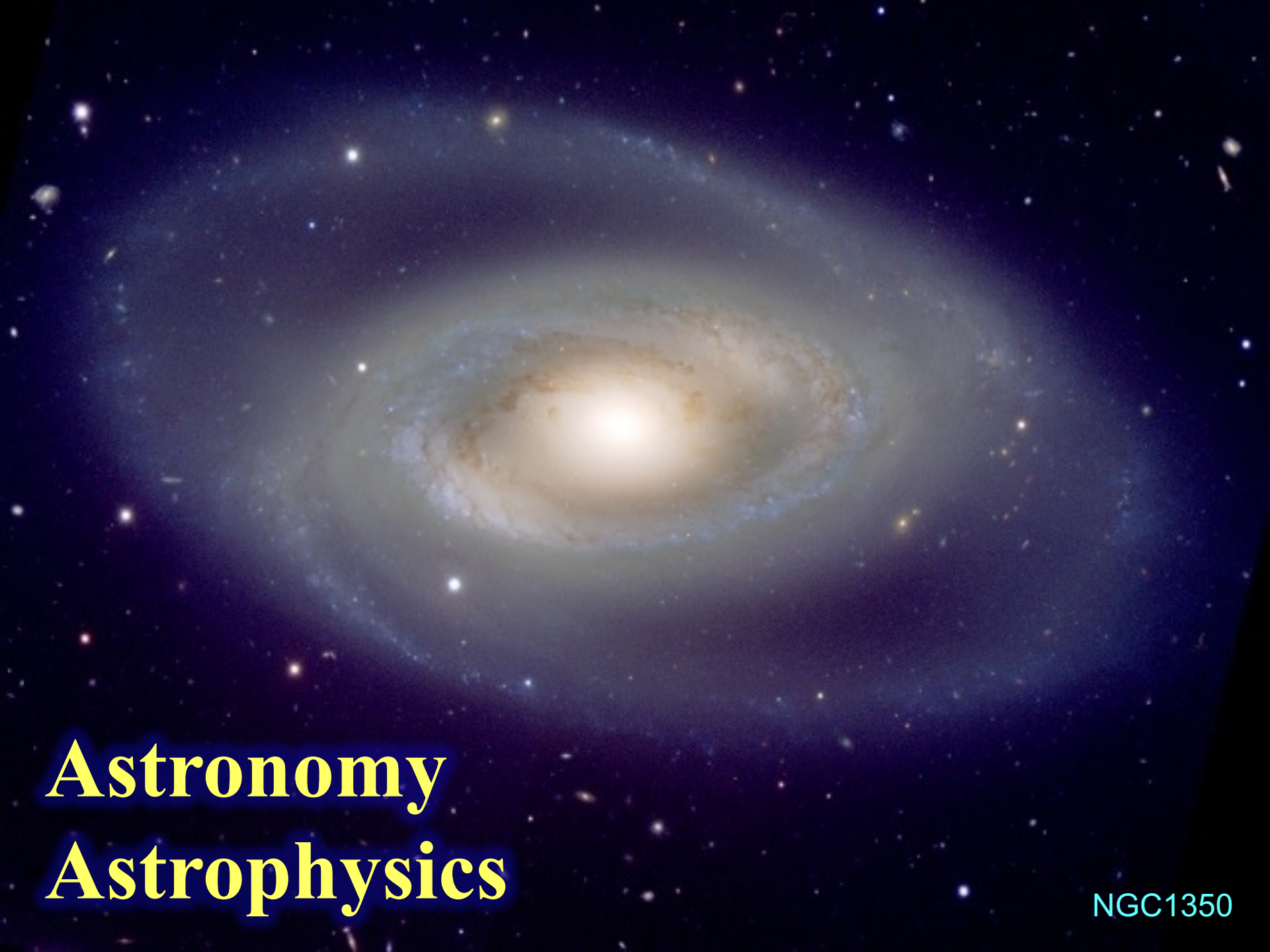
I. Introduction

A. Culture

B. Presuppositions

C. Evidence

CREATION science



Astronomy

Astrophysics

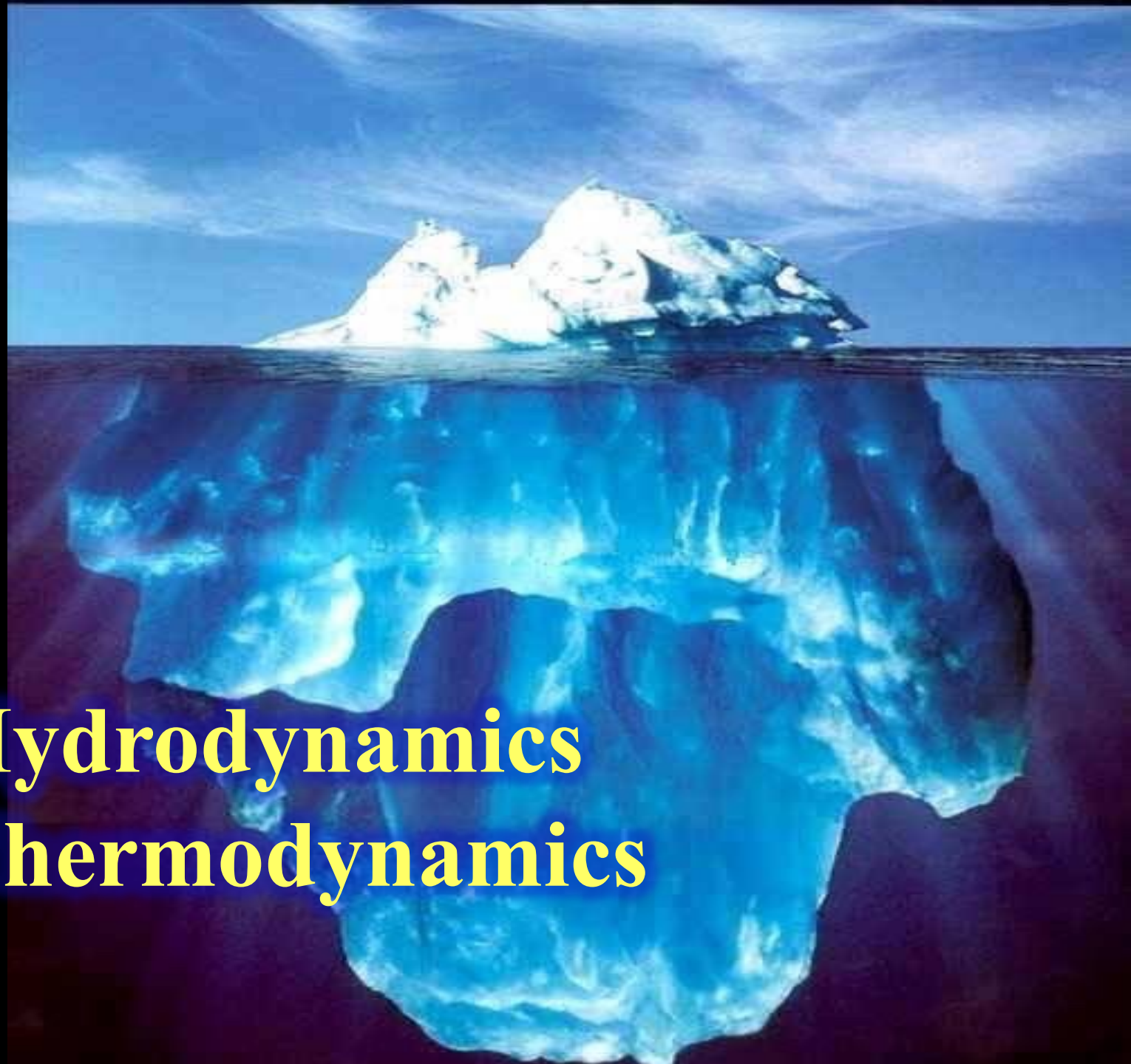
NGC1350

EVIDENCE from

ASTROPHYSICS & ASTRONOMY

NGC1350

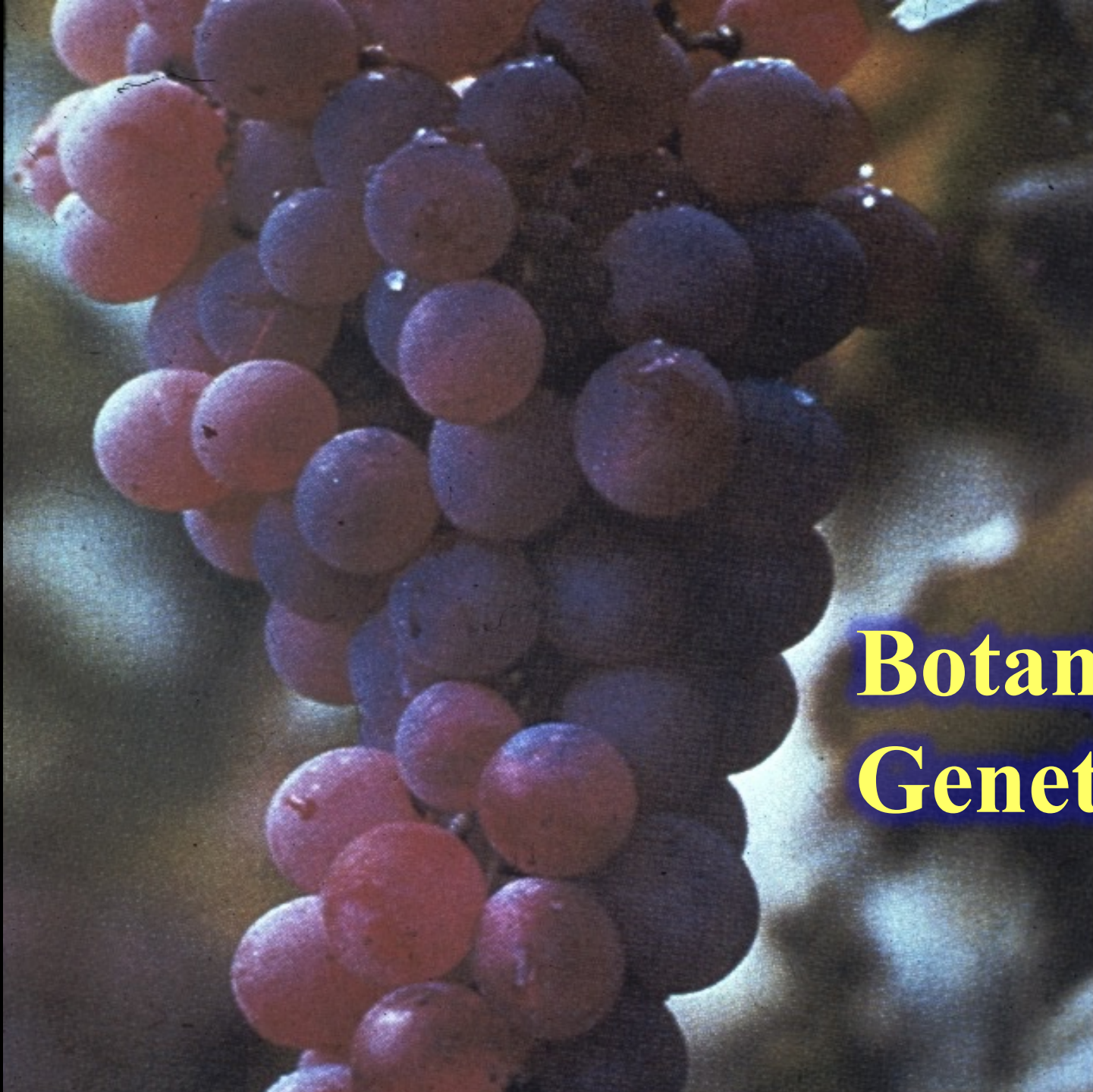
**“The heavens are telling of the glory of
God; and the firmament is declaring the
work of your hands.” Ps 19:1**



Hydrodynamics
Thermodynamics

Hydrology

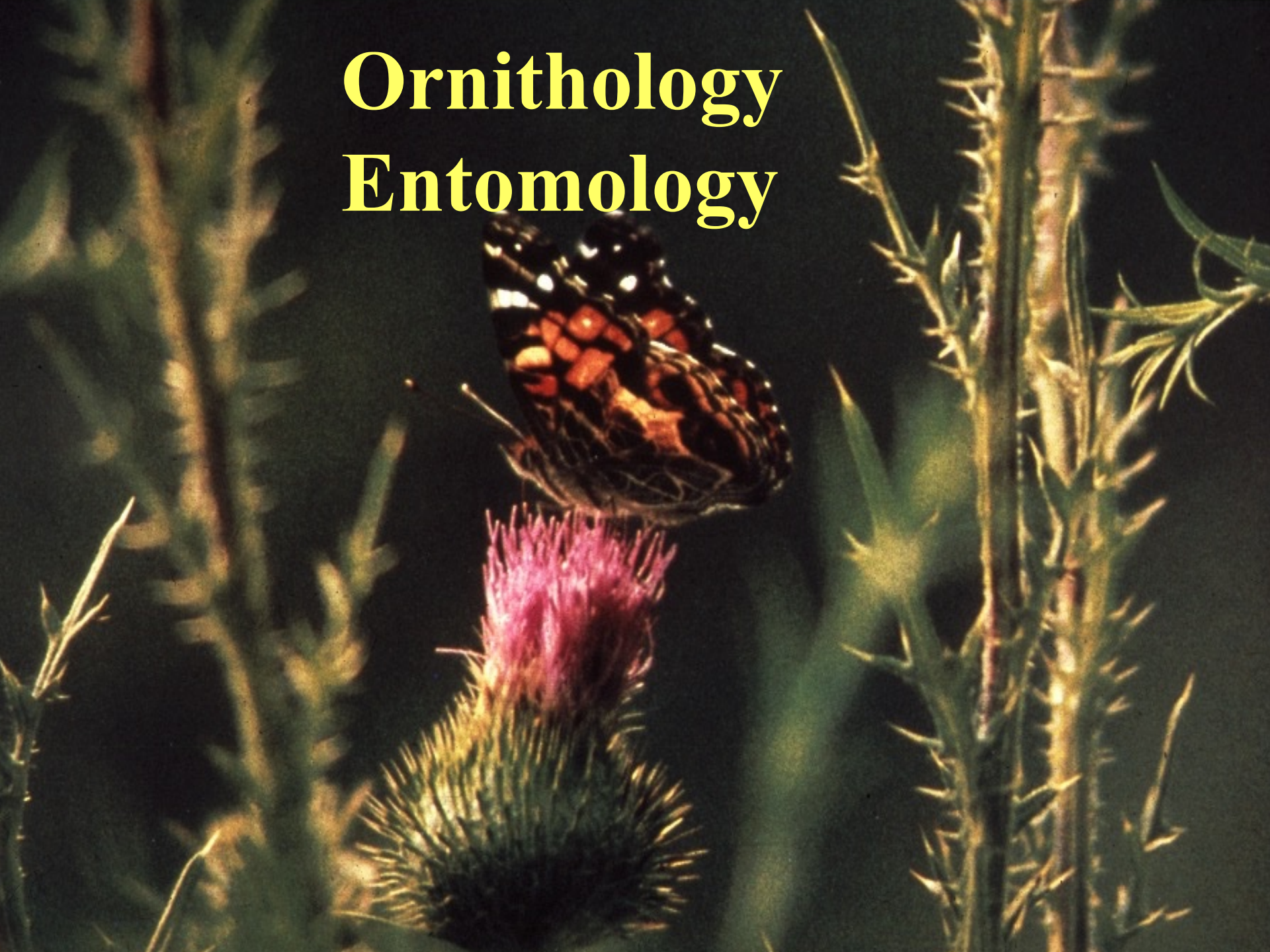




Botany
Genetics

Ornithology

Entomology





Zoology

Mammalogy

EVIDENCE from

ZOOLOGY & ORNITHOLOGY

“... ask the beasts, & let them teach you;
& the birds of the heavens, & let them
tell you; ... & let the fish of the sea
declare to you.”

Job 12:7-8

BOTANY, ETC.



Geophysics Tectonics





Orogeny

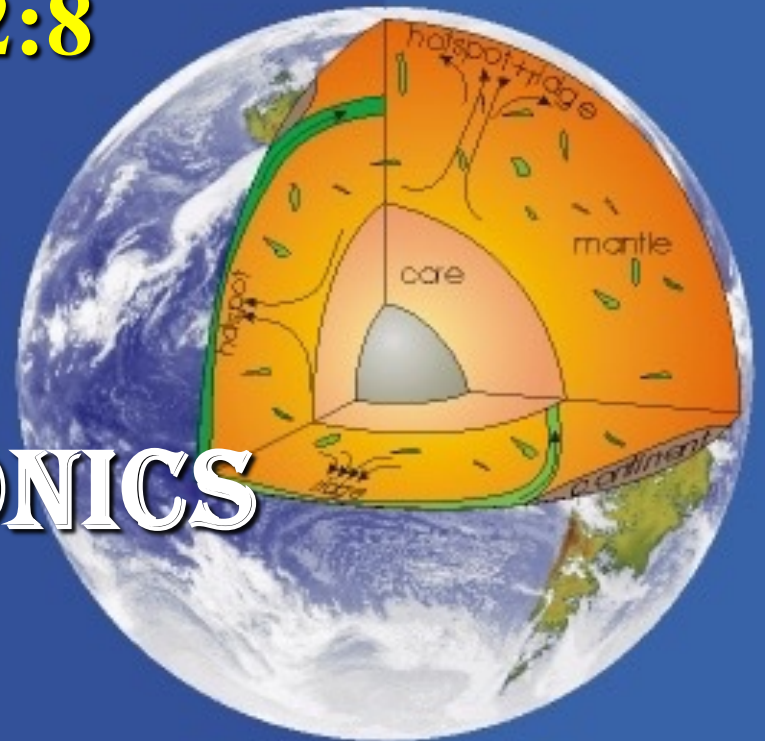
Historical Geology

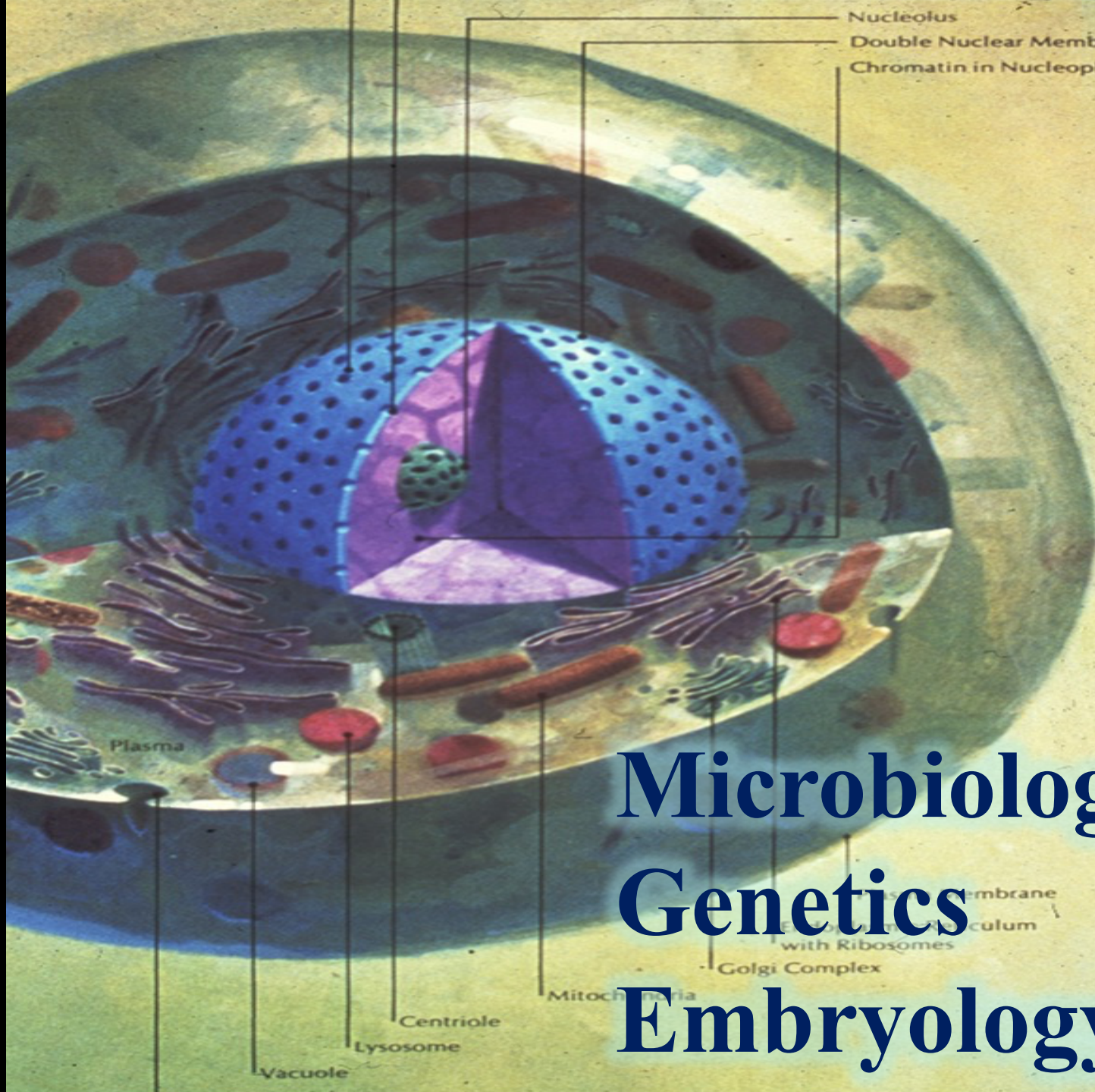
EVIDENCE from

GEOPHYSICS & GEOLOGY

“Or speak to the earth and let it
teach you” Job 12:8

PALEONTOLOGY,
OROGENY, TECTONICS





Nucleolus
Double Nuclear Membrane
Chromatin in Nucleoplasm

Plasma

Microbiology

Genetics

Embryology

Cell Membrane
Endoplasmic Reticulum
with Ribosomes
Golgi Complex

Vacuole
Lysosome
Centriole

Mitochondria

A large, diverse crowd of people, likely at a conference or meeting, with many individuals raising their hands. The crowd is dense and fills the frame, extending into the background. The people are of various ages and ethnicities, and many are wearing name tags. The overall atmosphere appears to be one of active participation and engagement.

Anthropology Paleontology

EVIDENCE from

BIOLOGY & GENETICS

“In whose hand is the life of every living thing, & the breath of all mankind?”

Job 12:10

EMBRYOLOGY, ETC

**“Who among
all these does
not know That
the hand of the
Lord has done
this, ...**

Job 12:9



INTRODUCTION

I. Introduction

A. Culture

B. Presuppositions

C. Evidence

D. Major Issues

CREATION science

CREATION VS. EVOLUTION



FLOOD VS. HISTORICAL GEOLOGY





**YOUNG VS.
OLD EARTH**

INTRODUCTION

I. Introduction

II. Conflict of Worldviews

CREATION science

WORLDVIEWS



➤ Science vs Theology

Neptune
& Triton

WORLDVIEWS



“... a conceptual system by which we consciously or unconsciously place or fit everything we believe & by which we interpret & judge reality.”

RH Nash

WORLDVIEWS

How you view the world around you and how you live life as a result.

Your Worldview determines how you live.

WORLDVIEWS

A large, glowing blue planet (Neptune) and its moon (Triton) in space. The planet is on the right side of the frame, and the moon is a small crescent shape at the bottom center.

- **Science vs Theology**
- **Nature of Origins**

Neptune
& Triton

✧ **OBSERVATIONAL SCIENCE →**

Observations in **Present**

✧ **HISTORICAL SCIENCE →**

Traces of Past

OBSERVATIONS?

- 1. Origin of Universe**
- 2. Spontaneous Generation**
- 3. Multi-cells from 1 Cell**
- 4. 1 Species to Another**
- 5. Placement of Strata**

“Our theory of evolution has become ... one which cannot be refuted by any possible observations. It is thus ‘outside of empirical science’, but not necessarily false. No one can think of ways in which to test it.” ... (evolutionary ideas) have become part of an evolutionary dogma accepted by most of us as part of our training.”

Paul Ehrlich and LC Birch

PROOF

✧ Evolution

Spontaneous Generation

1 Species to Another

✧ Creative Power Displayed

Personal - Conversion

Future - Kingdom

WORLDVIEWS

The background of the slide features a large, detailed view of the planet Neptune, showing its characteristic blue and white cloud bands. In the lower-left corner, the moon Triton is visible as a small, crescent-shaped object against the blackness of space.

- **Science vs Theology**
- **Nature of Origins**
- **Nature of History**

Neptune
& Triton

✧ **DATA =**

Traces left by Event



✧ **HISTORICAL FACT =**

Data + Interpretation

OBSERV.

HIST.

Present

Past

Repeatable

Unique

Verification

Interpretation

Objective

Subjective

**“Where were you when I
laid the foundations of the
earth? ...”**

Job 38:4

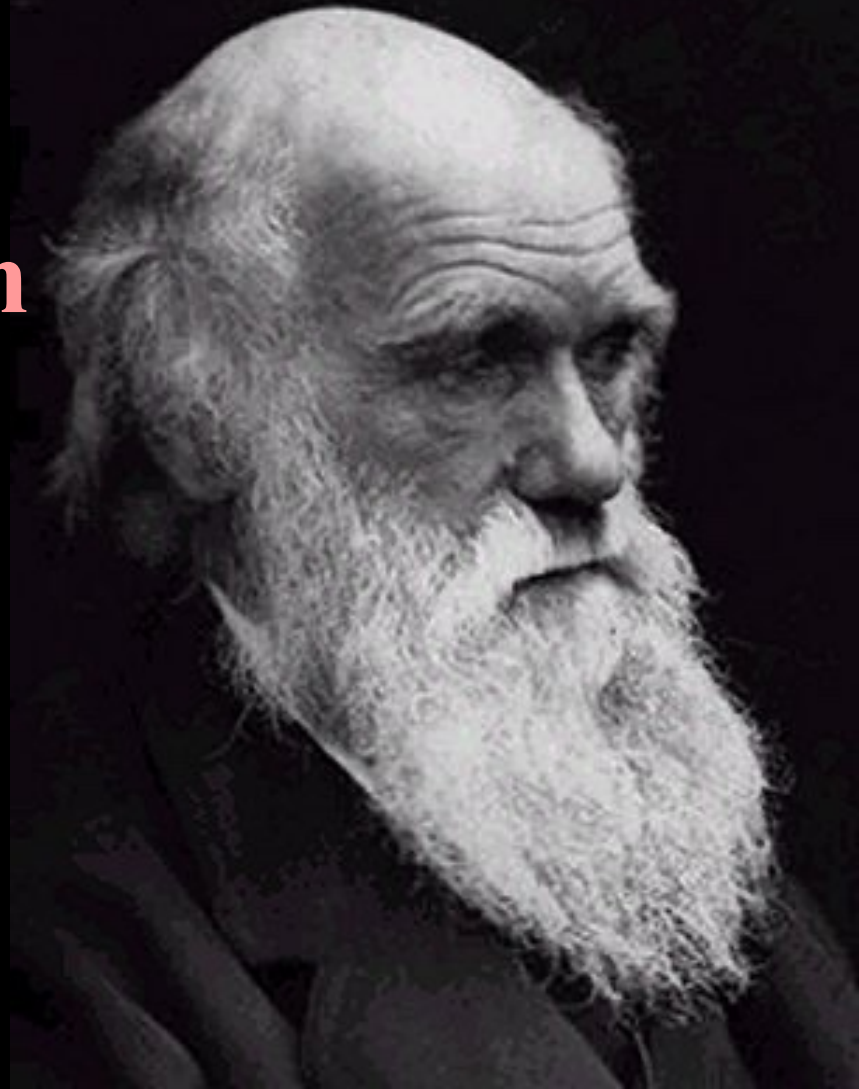
WORLDVIEWS

- **Science vs Theology**
- **Nature of Origins**
- **Nature of History**
- **Faith of Naturalist**

Neptune
& Triton

FAITH

✧ **Naturalist -
Self-organization
of Matter**



“A new generation has grown up which knows not Darwin. Is even then evolution not a scientific ascertained fact? **No! We must hold it as an act of **faith** because there is **no alternative.**”**

DH Scott (Botanist)

“In fact, evolution became in a sense a scientific religion; almost all scientists have accepted it and many are prepared to bend their observations to fit in with it.”

HS Lipson (British Physicist)

DESCRIPTIONS

- ✓ **Evolutionary Dogma**
- ✓ **Satisfactory Faith**
- ✓ **Man's World View**
- ✓ **All Prevailing Process**
- ✓ **Metaphysical Belief**
- ✓ **Grand View of Life**
- ✓ **Scientific Religion**
- ✓ **Illuminating Light**
- ✓ **Revealed Truth**
- ✓ **Whole of Reality**

Nursery Tale



Instantaneous



Nursery



Tale





300 million



years



= Science



WORLDVIEWS

- **Science vs Theology**
- **Nature of Origins**
- **Nature of History**
- **Faith of Naturalist**
- **Faith of Creationist**

Neptune
& Triton

FAITH

✧ **Naturalist -**

**Self-organization
of Matter**

✧ **Creationist -**

Intellect Behind Order

“By faith we understand that the worlds were prepared by the word of God, so that what is seen was not made out of things which are visible.”

Heb 11:3