

# BIBLICAL FOUNDATIONS -

Creation - Apologetics

# FOR ALL THINGS

# MUTATIONS

## FACTS

EVOLUTION

CREATION

Mechanism **Mutations** Destructive  
Occur

# MUTATIONS

## ❖ Mechanism -

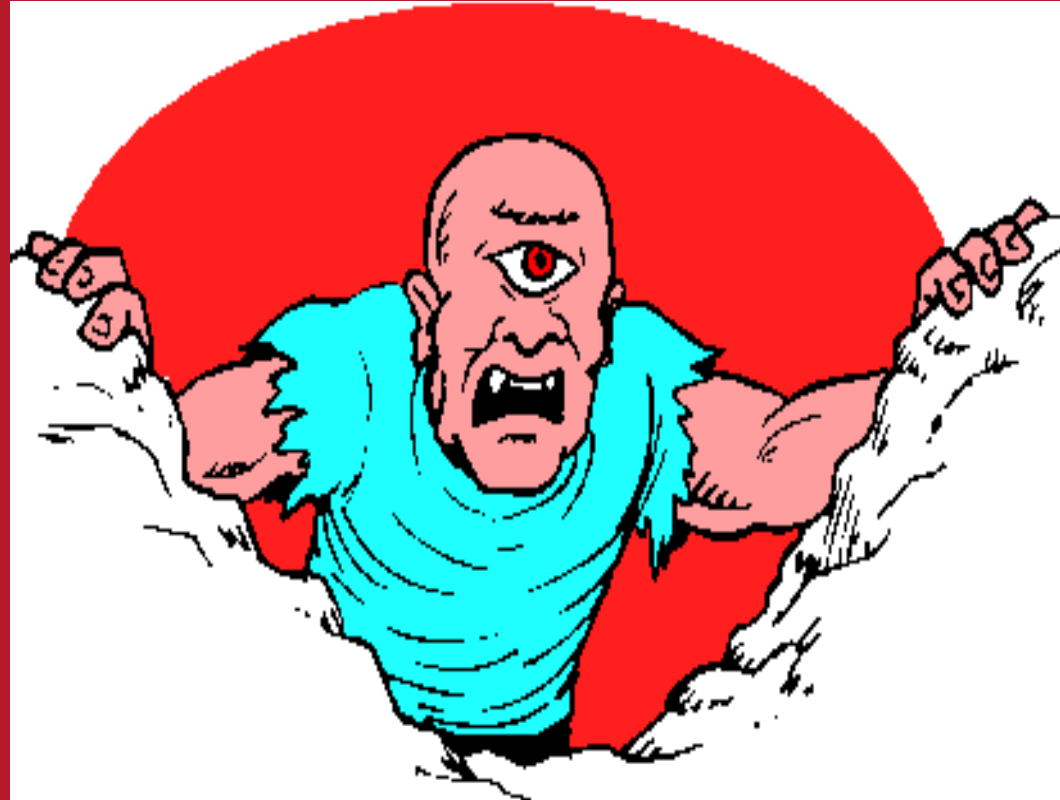
Frequent

Many

Beneficial

## ❖ Research -

160 years



# TRANSITIONAL FORMS

**From  
Plant Life  
to Animal  
Life**



# MUTATIONS

## 1. Rare



**1/10,000 to**  
**1/1,000,000**  
**/ gene / generation**  
**or**  
**1/10,000,000**  
**/ DNA duplication**

# MUTATIONS

1. Rare
2. Unpredictable



# TRANSITIONAL FORMS

?????





**“It remains true to say that we know of no way other than **random mutation** by which new hereditary variation comes into being, nor any process other than natural selection by which the hereditary constitution changes from one generation to the next.”**

**CH Maddington**

# MUTATIONS

1. Rare
2. Unpredictable
3. Harmful



**“Most mutations are bad.  
In fact, good ones are so rare  
we can consider them all  
bad.”**

**- well over 99% bad**

**HJ Muller**

# MUTATIONS

1. Rare
2. Unpredictable
3. Harmful
4. Genetic Burden



# GENETIC BURDEN

**Burden that  
drags down  
the genetic  
quality of a  
species**



# MUTATIONS

1. Rare
2. Unpredictable
3. Harmful
4. Genetic Burden
5. Pathological
6. Rejection
7. Information Loss



**“ ... in all the reading I’ve done in the life-sciences literature, I’ve never found a mutation that added information.”**

**Lee Spetner**

# **CONCLUSION**

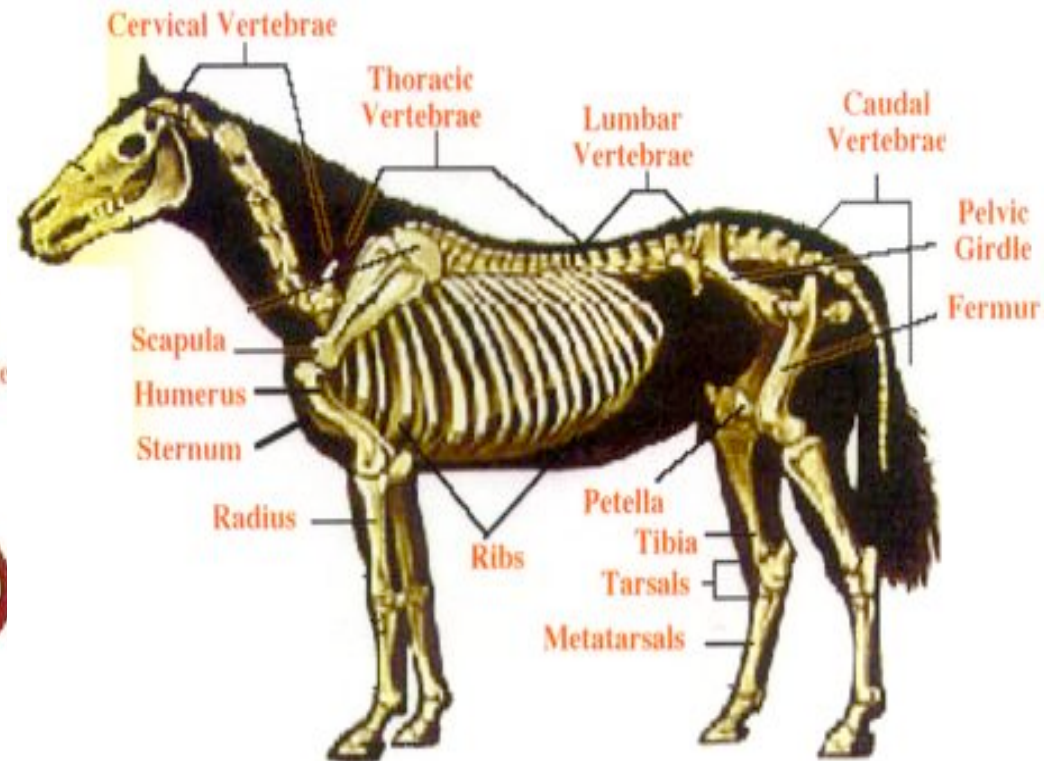
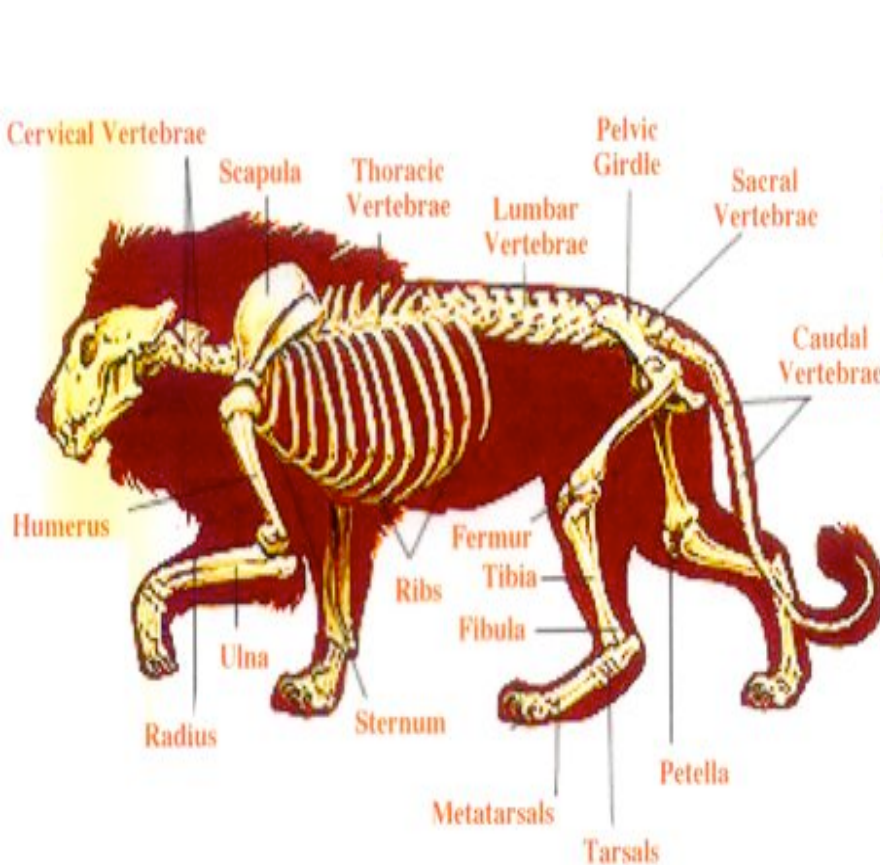
- **No Mechanism for Evolution**
- **Evidence of Degeneration**



# COMPARATIVE ANATOMY

- **Similarity in Anatomy**
- **Basis of Classification**
- **There are Similarities**
- **How Do you Explain?**

# COMPARATIVE ANATOMY





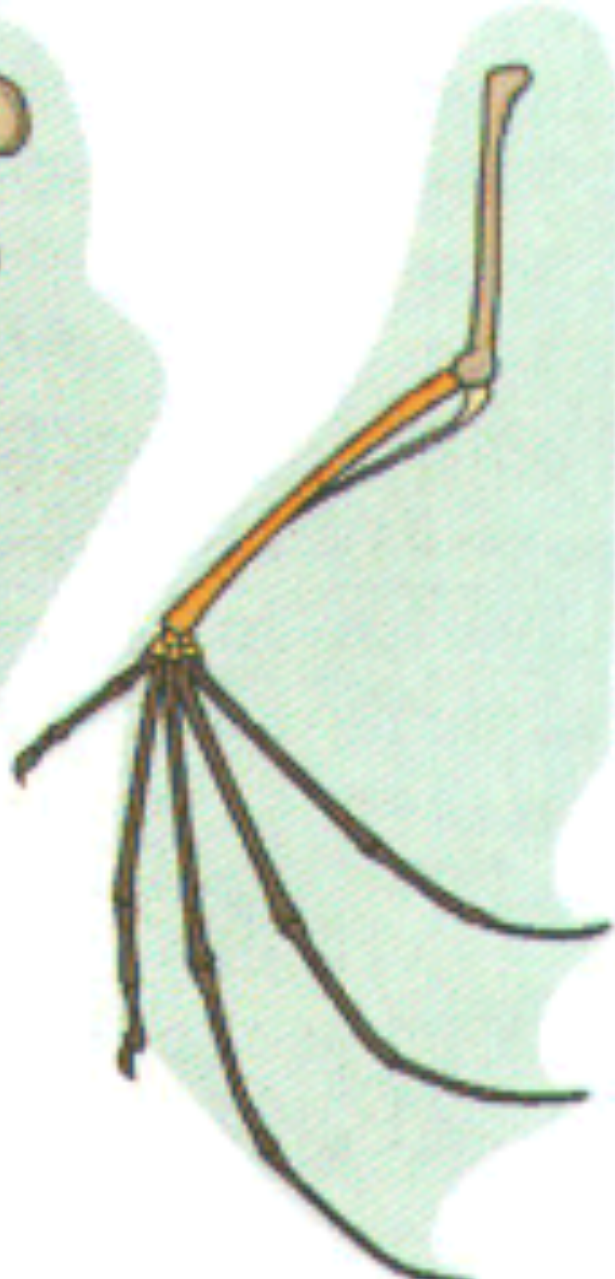
**Human**



**Cat**



**Whale**



**Bat**

**Similar Structures ->  
Common Ancestry**

**OR**

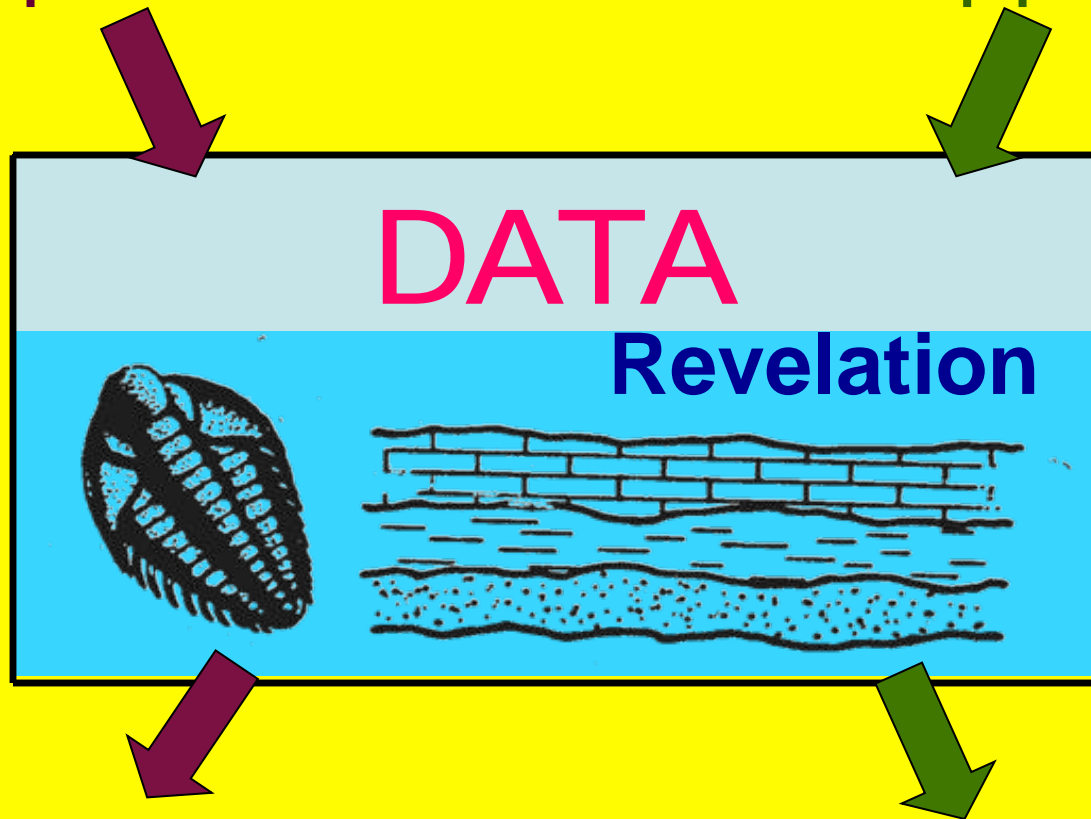
**Similar Design ->  
Common Designer**

# **PROBLEMS**

- 1. Vast Differences**
- 2. Changing Views**
- 3. Convergence**
- 4. Divergence**
- 5. Arbitrary Groupings**

Presupposition A

Presupposition B



Interpretation A

Interpretation B

# **CREATION VS EVOLUTION**



- **Weakness of Evolution**
- **Destroying Evidence**



# Geological Column

Cambrian

Precambrian

ERA	PERIOD	MILLIONS OF YEARS		TYPICAL PLANTS AND ANIMALS
		START	DURATION	
GENOZOIC	PLEISTOCENE	1	1	 <p>MAMMOTH, SLOTH, MAMMOTH</p>
	PLIOCENE	11	10	
	MIOCENE	25	14	
	OLIGOCENE	40	15	
	EOCENE	60	20	
	PALEOCENE	70	10	
MESOZOIC	CRETACEOUS	135	65	 <p>PLEURONIA, CYCADS, PTEROSAUR, DYNOSAUR</p>
	JURASSIC	180	45	
	TRIASSIC	225	45	
PALEOZOIC	PERMIAN	270	55	 <p>PLEURONIA, FERNS, INSECTS, TRILOBITE</p>
	PENNSYLVANIAN	310	40	
	MISSISSIPPIAN	350	40	
	DEVONIAN	400	50	
	SILURIAN	440	40	
	ORDOVICIAN	500	60	
	CAMBRIAN	600	100	
	PRECAMBRIAN	LATE	1700	
EARLY		3440	1700	



# **FOSSIL RECORD**

- 1. Abrupt Appearance**
- 2. Complex Forms**
- 3. No Transitional Forms**
- 4. Inconsistencies**
- 5. Persistence of Kinds**

# CONCLUSION

**Fossil Record Destroys  
Evolution**

**And Supports**

**Creation Science**

# **CREATION VS EVOLUTION**

➤ **Weakness of Evolution**

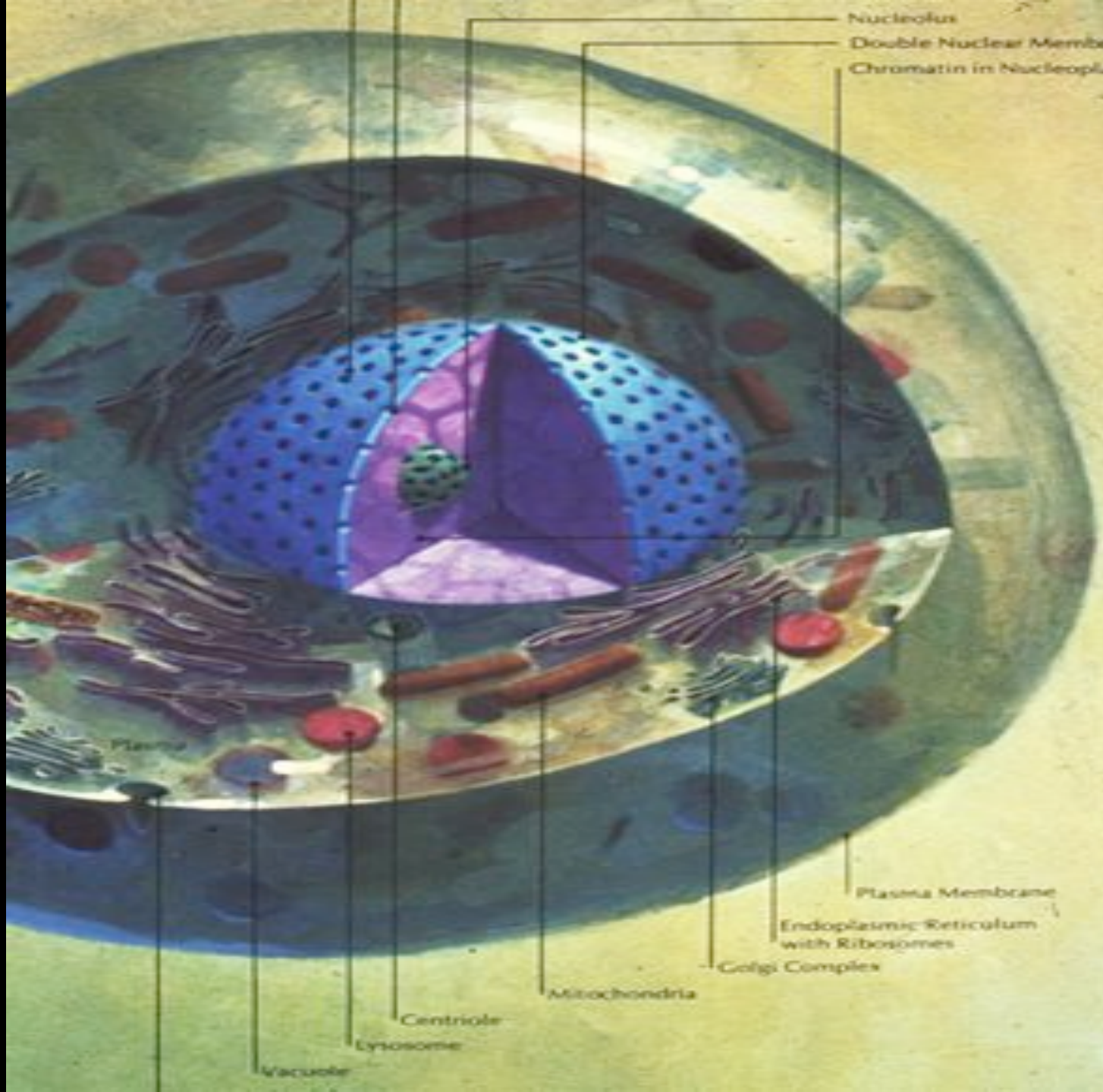
➤ **Destroying Evidence**

➤ **Scientific Evidence for Creation**



# Complexity Everywhere





Nucleolus  
Double Nuclear Membrane  
Chromatin in Nucleoplasm

Plasma

Plasma Membrane

Endoplasmic Reticulum  
with Ribosomes

Golgi Complex

Mitochondria

Centriole

Lysosome

Vacuole

# 1 CELL

- ✓ DNA
- ✓ RNA
- ✓ Mitochondrion
- ✓ ATP
- ✓ Polysaccharides
- ✓ Cyclic AMP
- ✓ Ribosomes
- ✓ Lysosomes
- ✓ Lipids
- ✓ Porphyrins
- ✓ Proteins
- ✓ Amino Acids

“The cumulative result shows with piercing clarity that life is based on ***machines***—machines made of molecules!”

Michael Behe

**“Molecular biology has shown that even the simplest of all living systems on earth today, bacterial cells, are exceedingly **complex** objects. ... far **more complicated** than anything built by man ...”**

**Michael Denton**



# DNA



- Double Helix Chains
- Library in Molecule
- All Characteristics

- More Info Stored than any Other Known System

# 2ND LAW

An irreversible tendency to unwind -

"In any physical change that takes place by itself the entropy always increases."

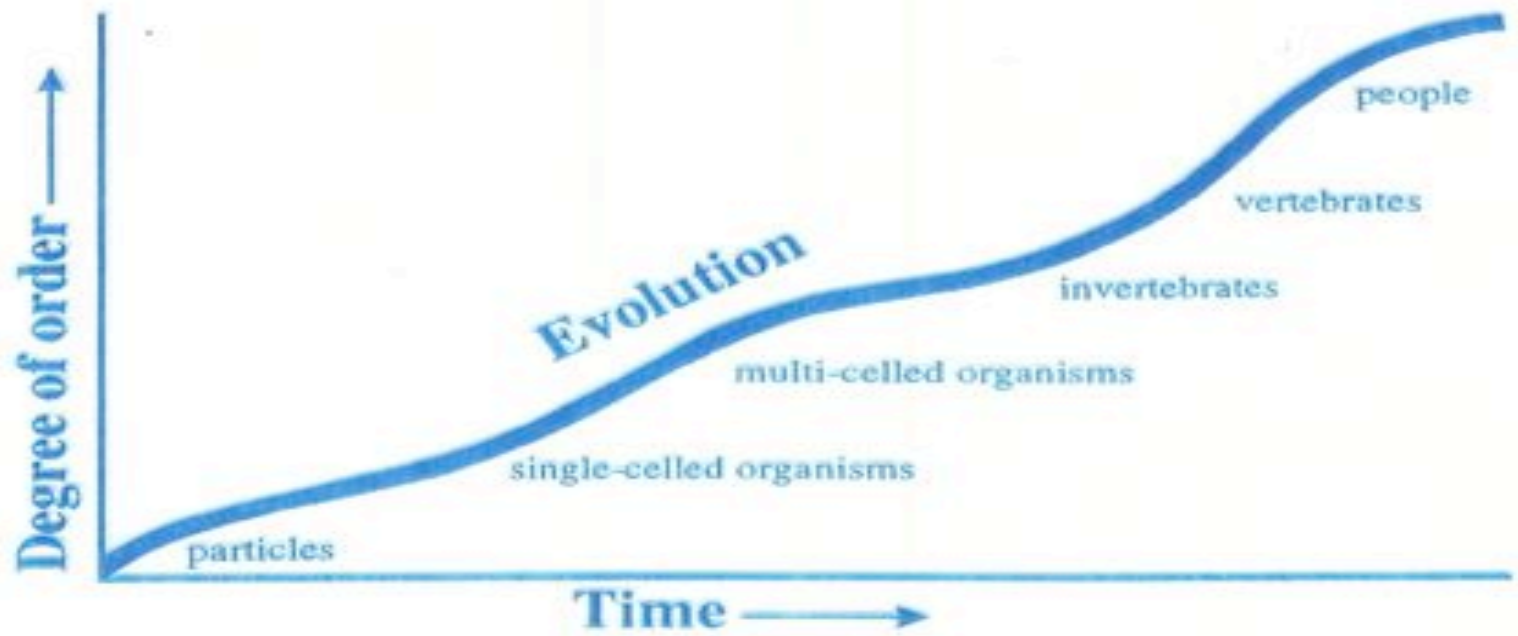
Morris

**“Thus, heat always flows spontaneously from a hotter to a colder body; gases always seep thru an opening spontaneously from a region of high pressure to a region of low pressure; gases & liquids left by themselves always tend to mix, not unmix. ... Rocks weather & crumble; iron rusts; people grow old. These are all examples of irreversible processes that take place naturally in only one direction &, by their one-sidedness, express the 2nd law of thermodynamics.”**

**Sears & Zemansky**

# 2<sup>nd</sup> LAW of Thermodynamics

- Irreversible tendency to unwind
- Movement from organization to disorganization
- Law of decay
- Isa 51:6, Ro 8:20-22

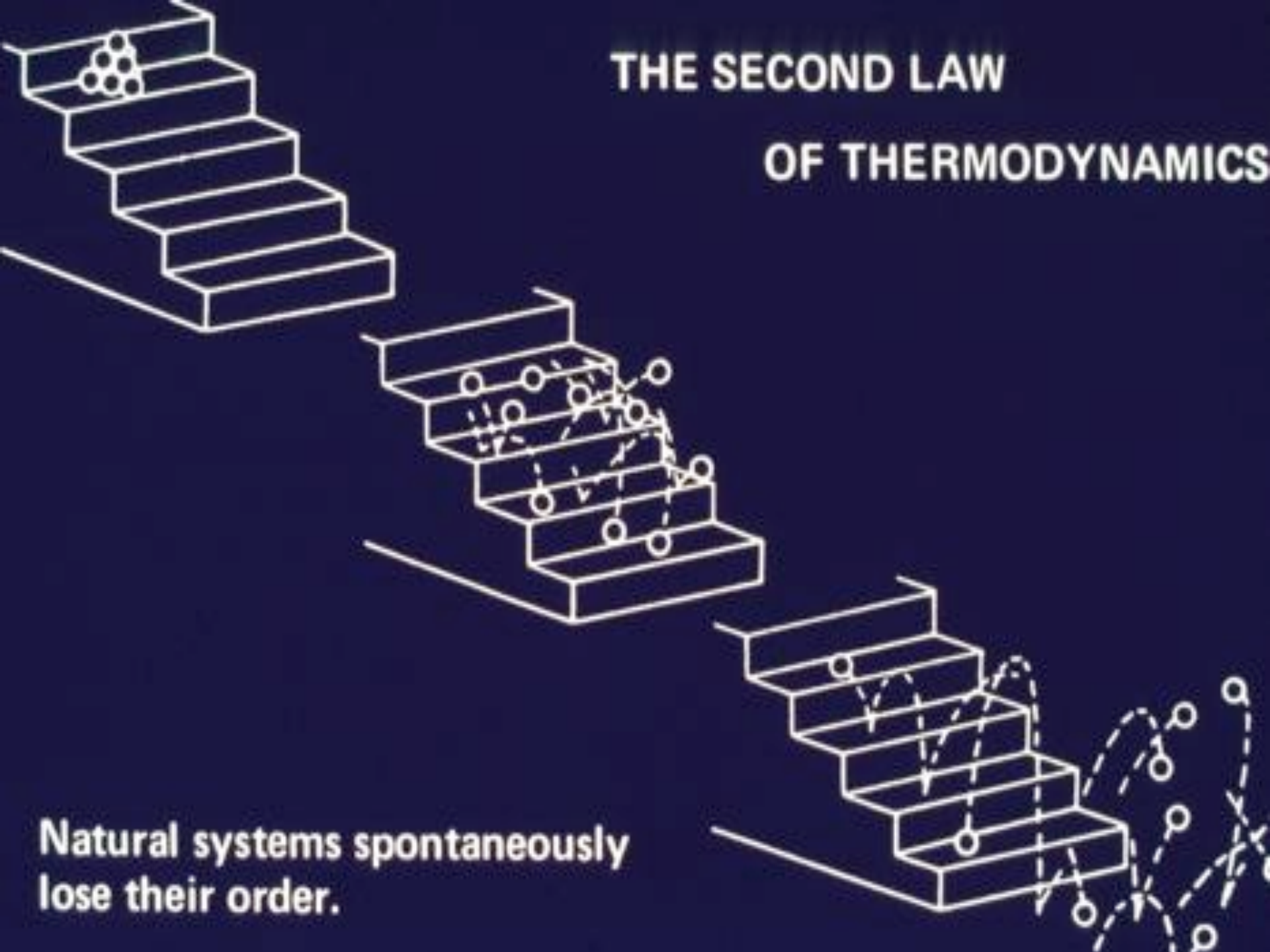


(a) Evolution proposes an increase in order over time.



# THE SECOND LAW

## OF THERMODYNAMICS



**Natural systems spontaneously lose their order.**

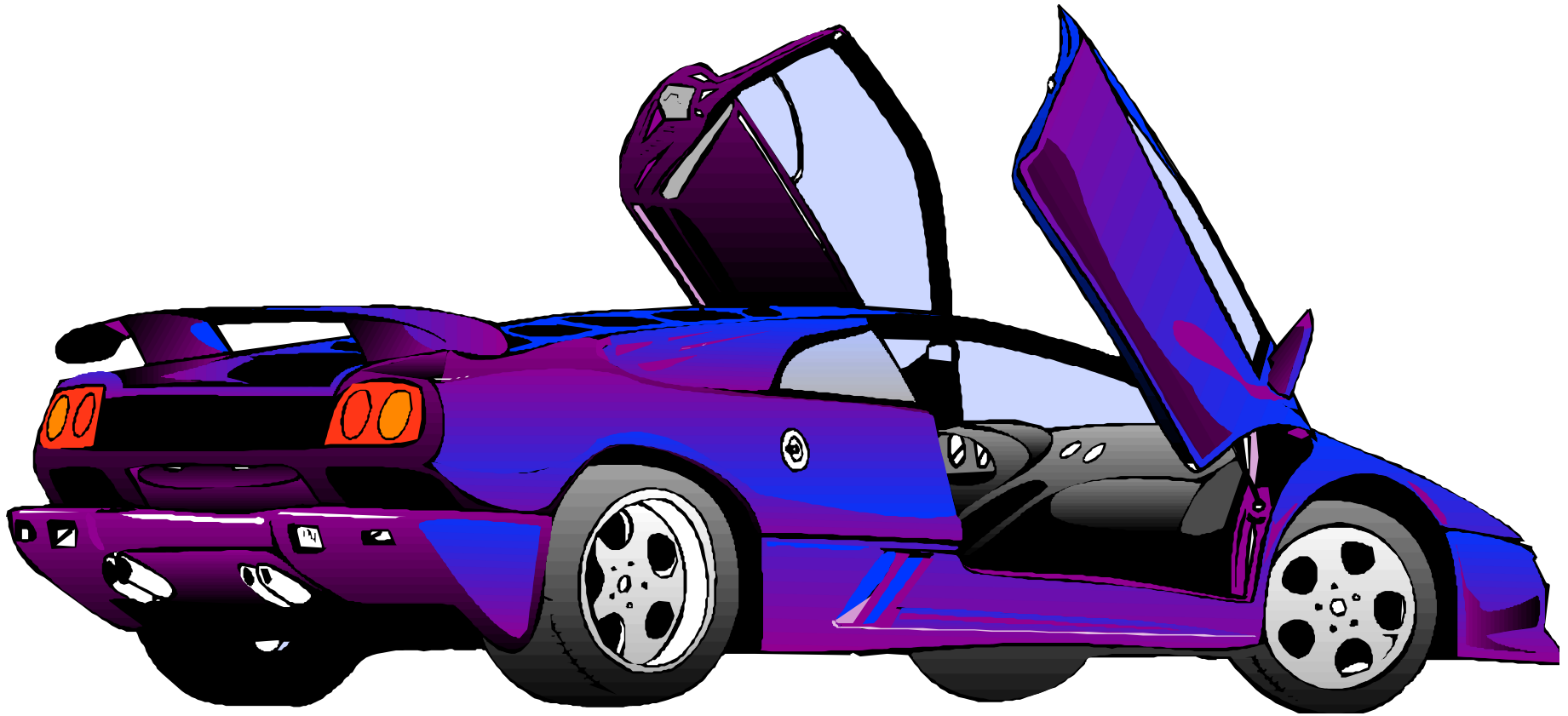


# After a Million Years?





**After 10 Million Years?**



# **THE MYTH OF** **EVOLUTION**

**“Ultimately the Darwinian theory of evolution is no more nor less than the great cosmogenic myth of the 20th century.”**

**Michael Denton**

# **CONCLUSION**

## ➤ **Evolution -**

**Positive Evidence is Superficial**

**Real Science Destroys Theory**

## ➤ **Creation –**

**Science Supports Intelligent Design**

**Science Supports Biblical Worldview**

# WHY EVOLUTION?

- **It is Man's best explanation leaving God out.**
- **If God is Creator, then all men stand accountable to Him.**



# ATTACKS

**1. Theology & History**

**2. Science**

**a. Creation vs. Evolution**

**b. Theistic Evolution**

**3. World**