

SCIENCE &

SCRIPTURE

In the beginning God created
the heavens and the earth.

Gen 1:1



CREATION VS. EVOLUTION



WEAKNESS OF EVOLUTION

- **Mechanism - None**
- **Support - Superficial**
- **Past Support - Destroying**
- **Against - Supports Creation**

EVIDENCE?

1. Comparative Anatomy

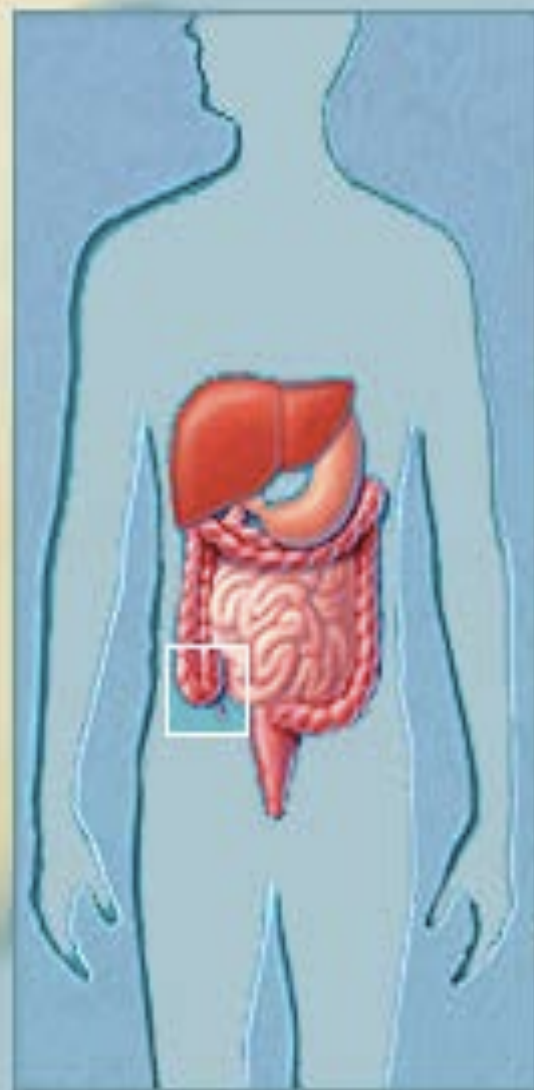
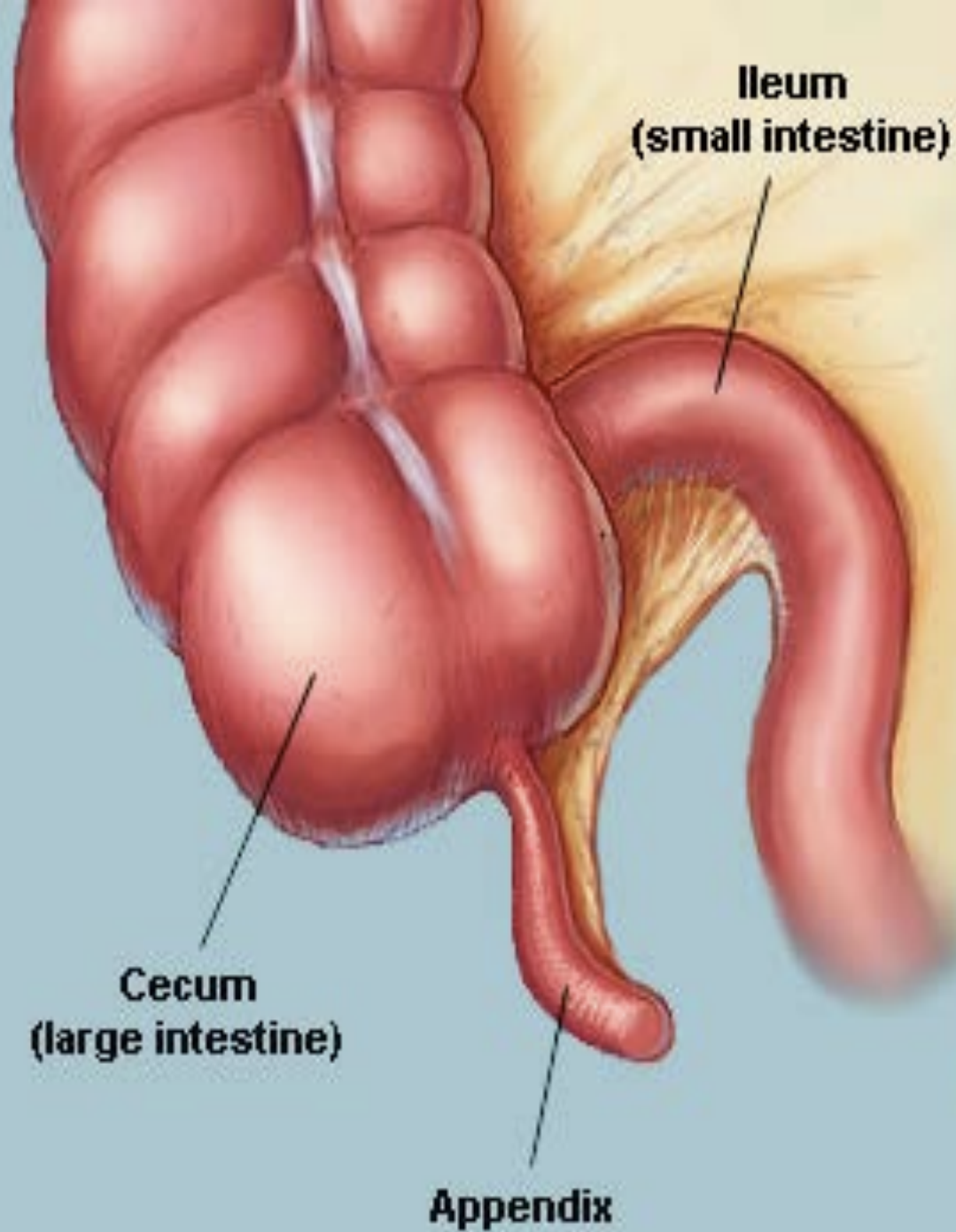
2. Microevolution

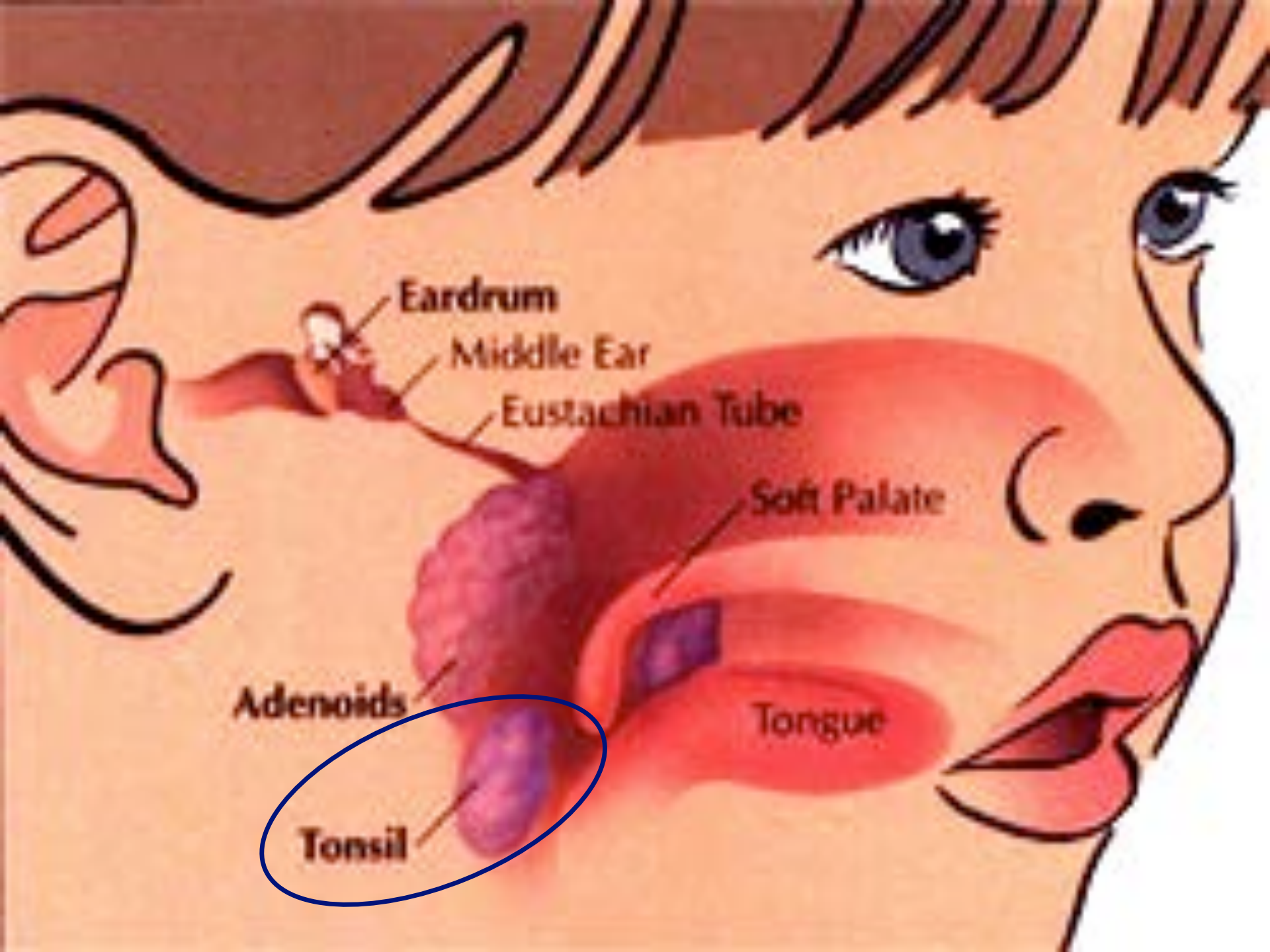
3. Vestigial Organs



VESTIGIAL ORGANS

➤ Evolution - Left Over Parts





Eardrum

Middle Ear

Eustachian Tube

Soft Palate

Adenoids

Tongue

Tonsil

VESTIGIAL ORGANS

➤ **Evolution - Left Over Parts**

➤ **Creation -**

Discovery of Use

DNA Different

Less than Expected

Poor Examples

Do not Disappear

Updated Version:

Junk DNA

EVIDENCE?

- 1. Comparative Anatomy**
- 2. Microevolution**
- 3. Vestigial Organs**
- 4. Embryology**



EMBRYOLOGY

**5th
Week**



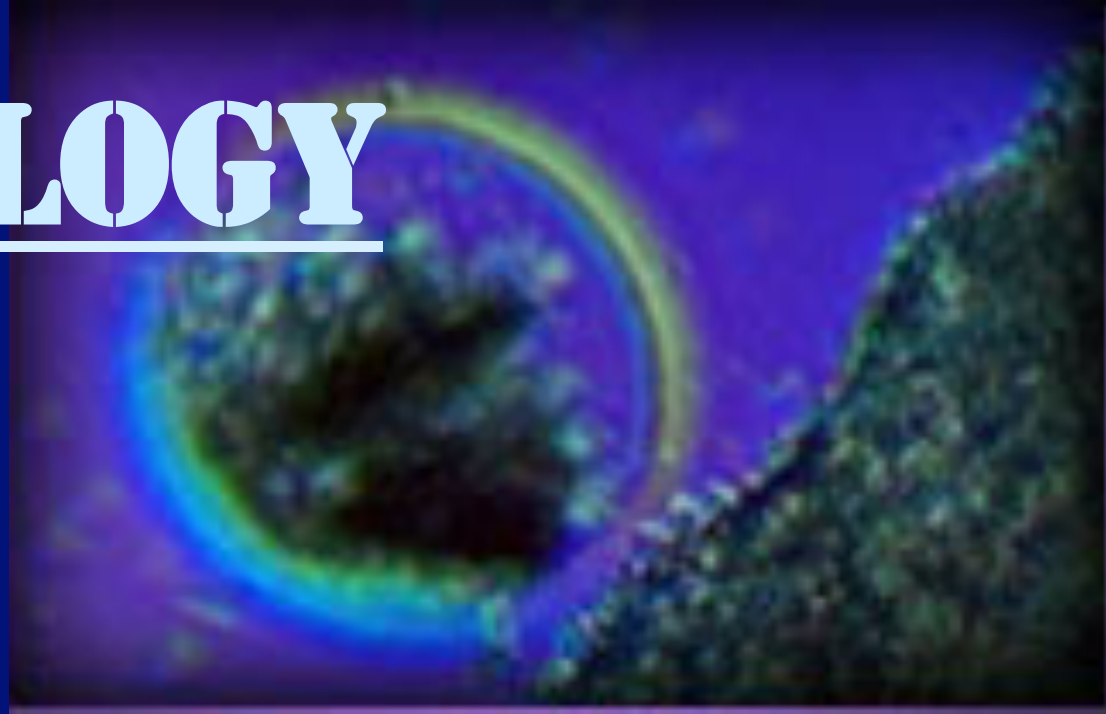
**8th
Week**



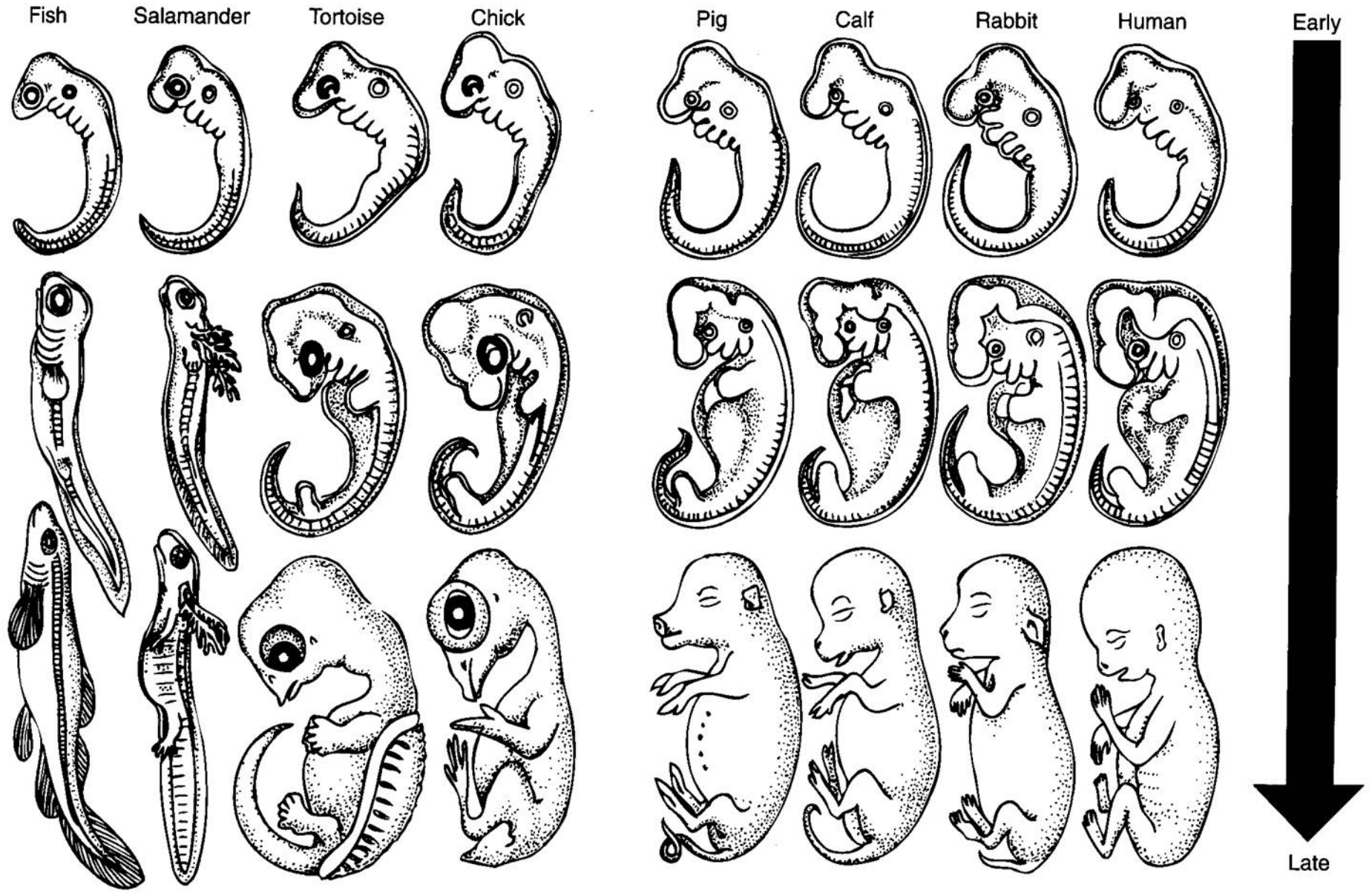
**4th
Month**



EMBRYOLOGY



**Recapitulation
Theory**



Haeckel's Fraudulent Drawings



**TOTALLY
DISCREDITED**

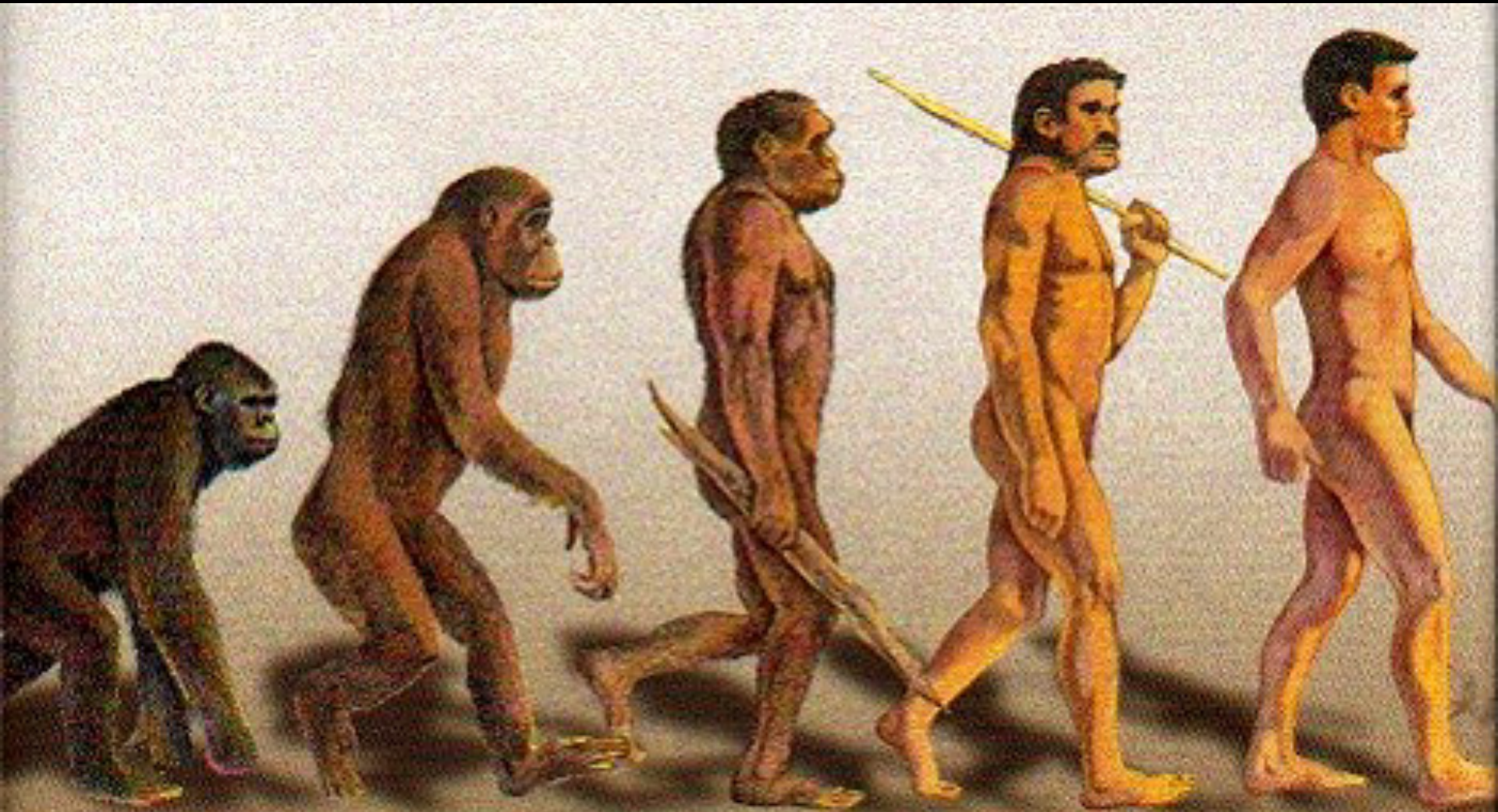
**Yet
Still
Used**

25 Weeks

EVIDENCE?

- 1. Comparative Anatomy**
 - 2. Microevolution**
 - 3. Vestigial Organs**
 - 4. Embryology**
 - 5. Anthropology**
- 

Ape-Men – Fact or Fiction

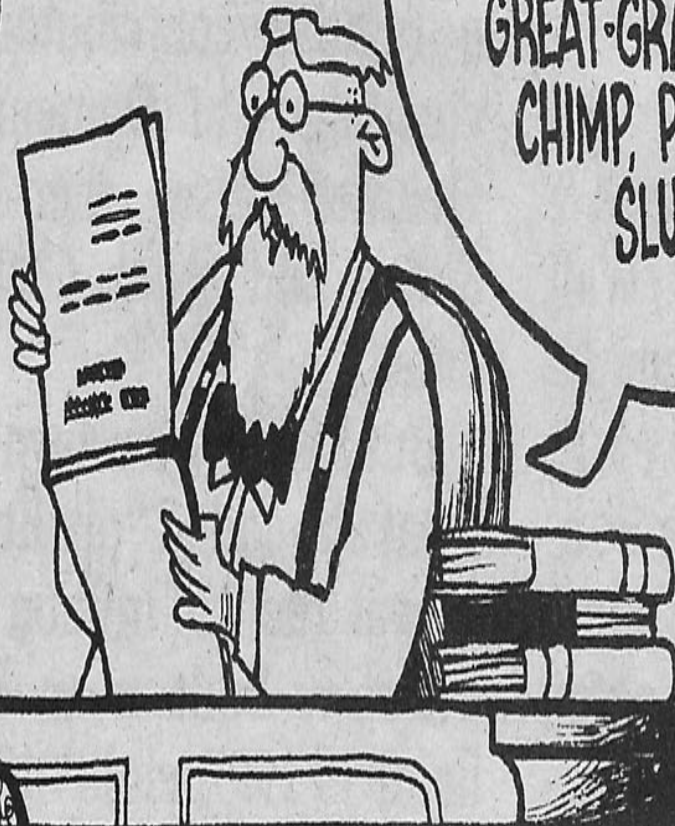


ANTHROPOLOGY



GENEALOGY

RAESIDE
5-14
83



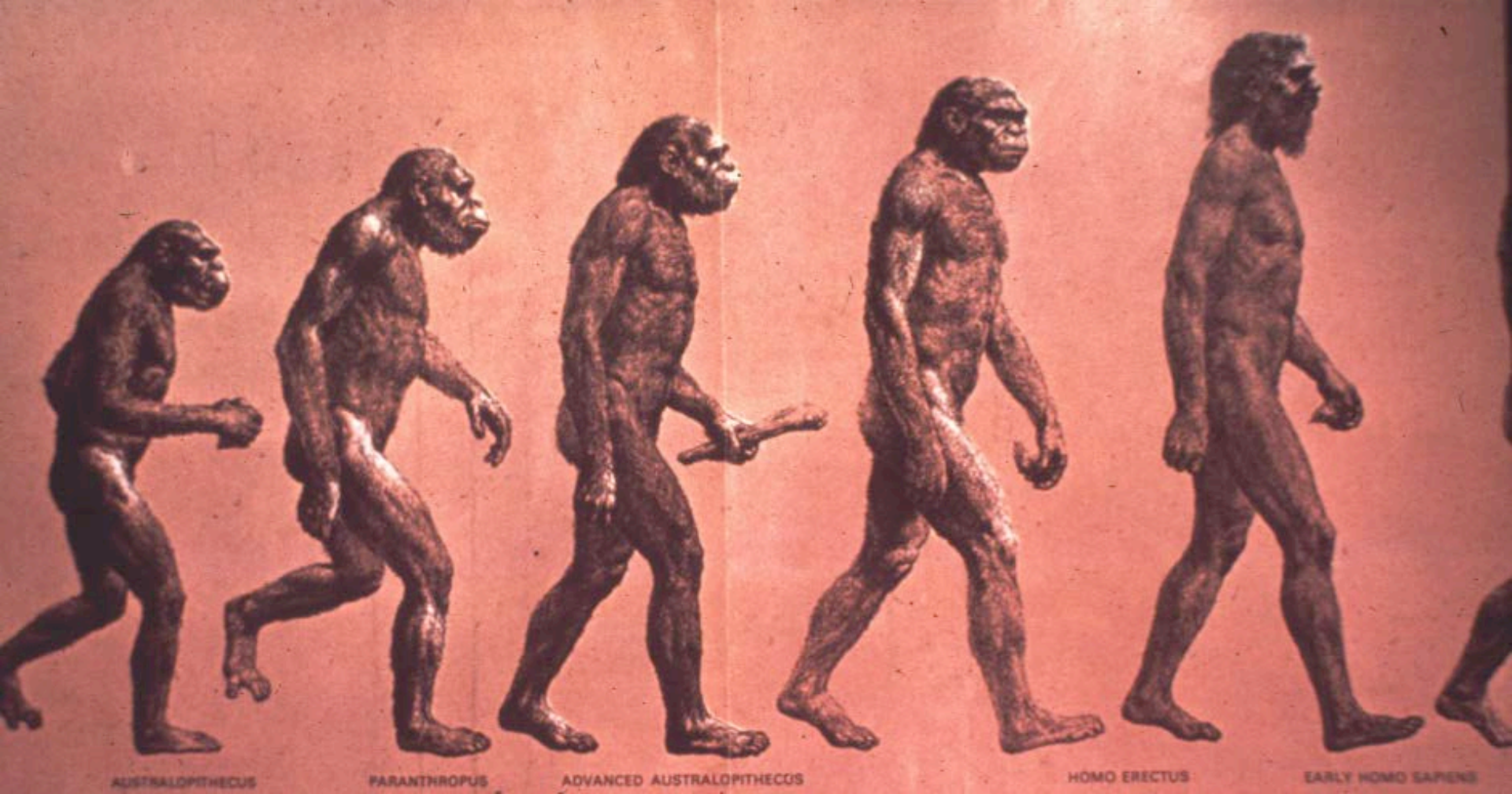
YOUR CASE WAS QUITE
SIMPLE... GRANDFATHER,
GREAT-GRANDFATHER,
CHIMP, PRIMEVAL
SLUDGE.

raesidecartoon.com

THE OTHER SIDE

EVOLUTION

- **Missing Links Required**
- **Common Ancestor of Man & Apes**
- **5-20 million years ago**
- **True Man - 1-3 million**
- **Future - deity**



Ramapithecus

Homo Erectus

Australopithines

Homo Sapien

MISCONCEPTIONS

CREATION

1. Availability of Fossil
2. Authority of Science
3. Hominid Fossils
4. Science as Self-correcting

(Lubenow)

Where we are going depends on
where we came from

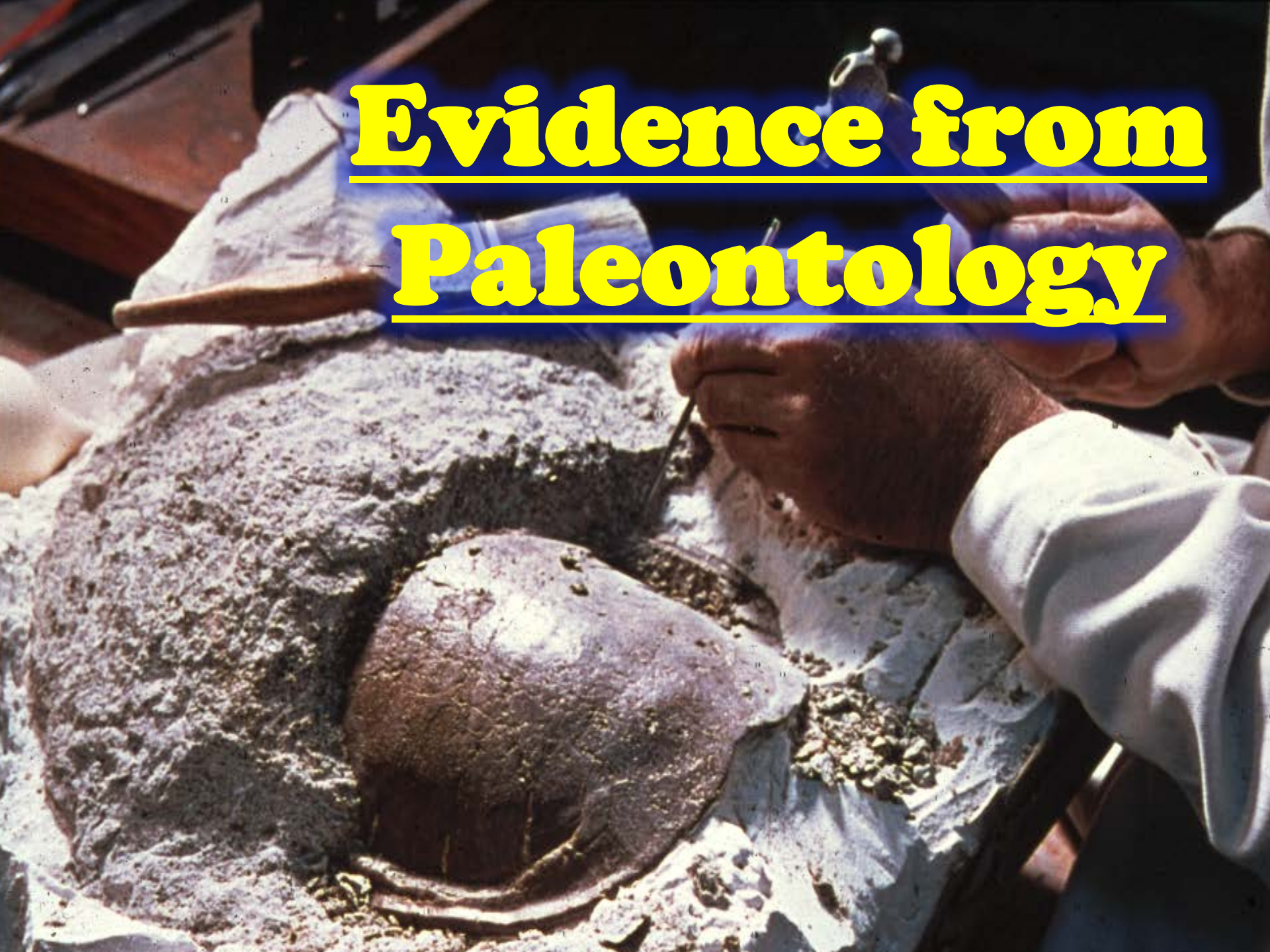


WEAKNESS OF EVOLUTION

- **Mechanism - None**
- **Support - Superficial**
- **Destroying - Past Support**





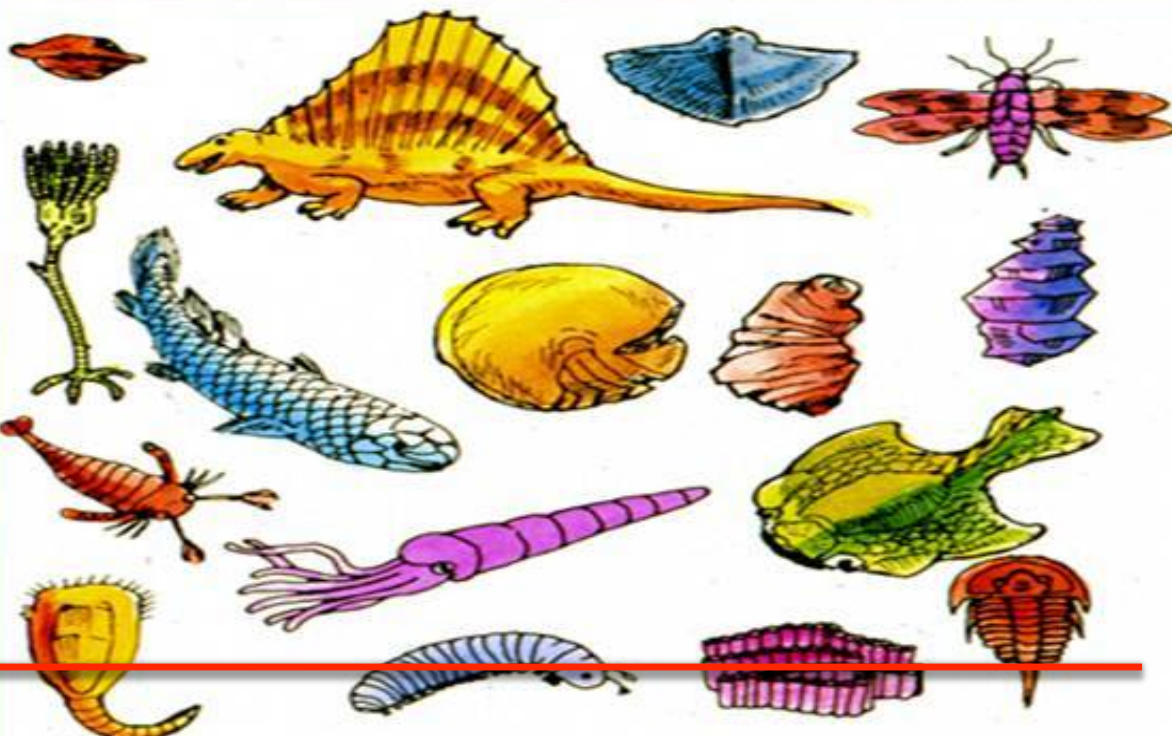
Evidence from Paleontology



“The theory of evolution must stand or fail by the evidence of the fossils. They furnish the only direct evidence. If this be against the theory no amount of indirect evidence can avail...”

Douglas Dewar

The Geologic Column

ERA	PERIOD	EPOCH	SUCCESION OF LIFE
CENOZOIC recent life	QUATERNARY 0-1 Million Years Rise of Man	Recent Pleistocene	
	TERTIARY 62 Million Years Rise of Mammals	Pliocene Miocene Oligocene Eocene	
MESOZOIC middle life	CRETACEOUS (135) 72 Million Years Modern seed bearing plants. Dinosaurs		
	JURASSIC (180) 46 Million Years First birds		
	TRIASSIC (125) 49 Million Years Cycads, first dinosaurs		
PALEOZOIC ancient life	PERMIAN (270) 50 Million Years First reptiles		
	PENNSYLVANIAN 30 Million Years First insects		
	MISSISSIPPIAN 35 Million Years Many crinoids		
	DEVONIAN (400) 60 Million Years First seed plants, cartilage fish		
	SILURIAN 20 Million Years Earliest land animals		
	ORDOVICIAN 75 Million Years Early bony fish		
	CAMBRIAN (600) 100 Million Years Invertebrate animals, Brachiopods, Trilobites		
	PRECAMBRIAN Very few fossils present (bacteria-algae-pollen?)		

ASSUMPTIONS

- 1. Strata Ordered by Fossils**
- 2. Succession of Life Forms**
- 3. Uniformitarianism**
- 4. Catastrophism Rejected**
- 5. Classification by Fossils**

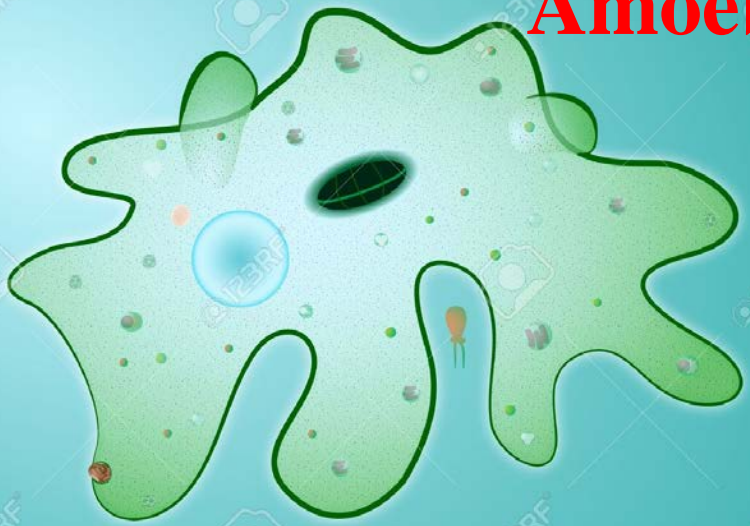
PROBLEMS

- 1. Circular Reasoning**
- 2. Index Fossils not Extinct**
- 3. Strata out of Place**
- 4. Polystrate Fossils**
- 5. Marine Fossils thru out**
- 6. Relatively Few Humans**

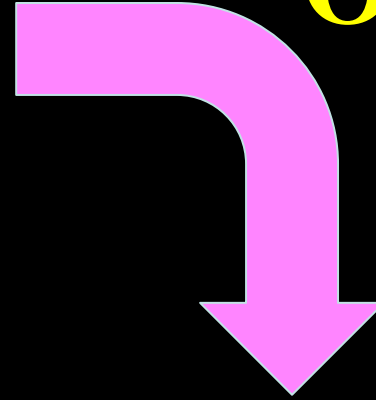
FOSSIL RECORD

1. Abrupt Appearance

Amoeba



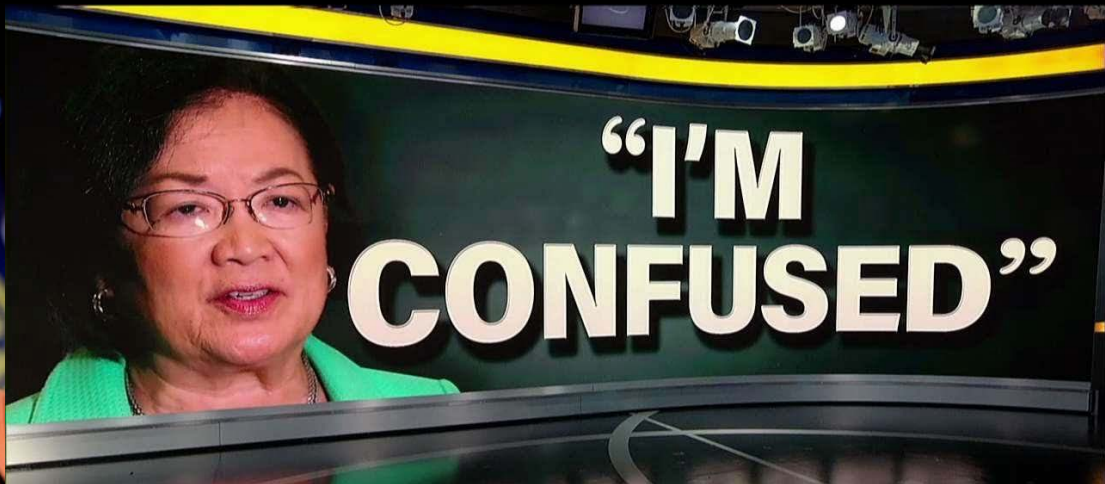
**1.5 Billion yrs
Of Missing
Fossils**



**Cambrian
Explosion**



SIMPLE LIFE FORM



**Evidence supplied
by Hintz**



“... it remains true as every paleontologist knows, that most new species, genera & families, & that nearly all categories above the levels of family, appear in the record suddenly & are not led up to by known, gradual, completely continuous transitional sequences. ...is the most puzzling feature of the whole fossil record but also is the greatest inadequacy.”

George G Simpson

FOSSIL RECORD

- 1. Abrupt Appearance**
- 2. Complex Forms**
- 3. No Transitional Forms**

“This regular absence of transitional forms is not confined to mammals, but is almost a universal phenomenon, as has long been noted by paleontologists. It is true of almost all orders of all class of animals, both vertebrate & invertebrate. A fortiori, it is also true of the classes themselves, & of the major phyla, & it is apparently also true of analogous categories of plants.”

George Gaylord Simpson

“The absence of fossil evidence for intermediary stages between major transitions in organic design, indeed our inability, even in our imagination, to construct functional intermediates in many cases, has been a persistent & nagging problem for gradualistic accounts of evolution.”

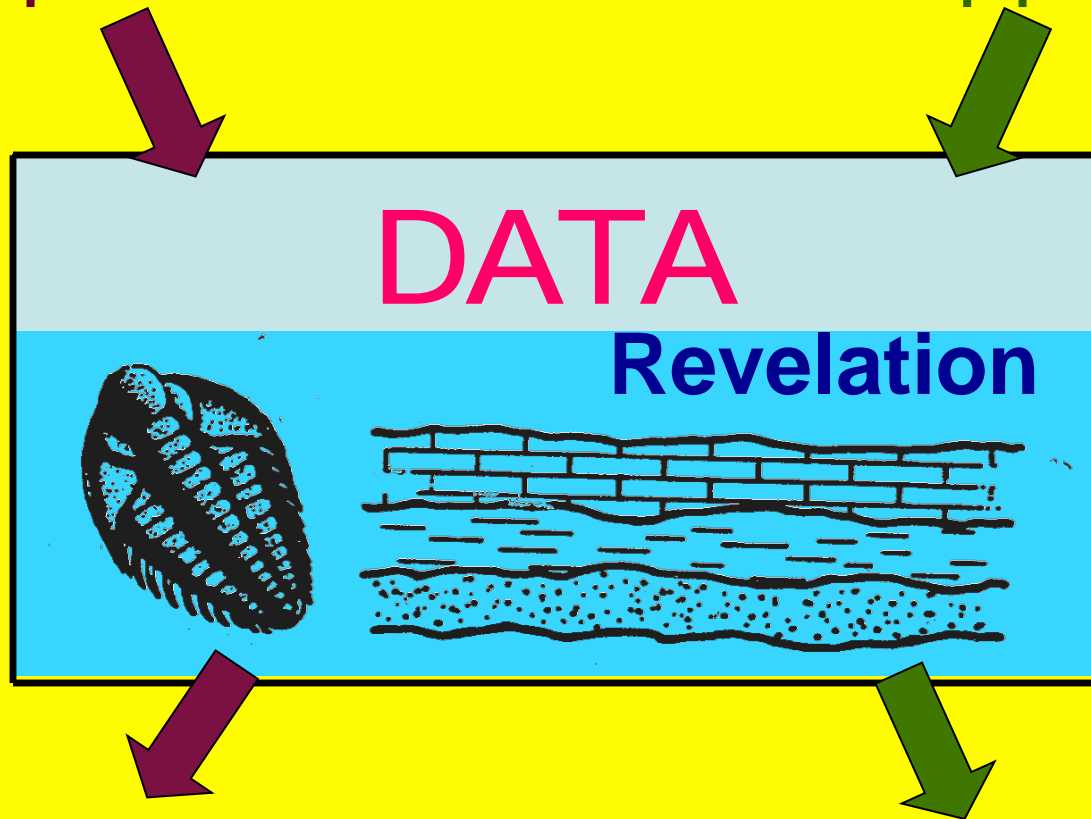
Stephen Jay Gould

FOSSIL RECORD

- 1. Abrupt Appearance**
- 2. Complex Forms**
- 3. No Transitional Forms**
- 4. Inconsistencies**
- 5. Persistence of Kinds**

Presupposition A

Presupposition B



Interpretation A

Interpretation B

“In any case, no real evolutionist, whether gradualist or punctuationist, uses the fossil record as evidence in favor of the theory of evolution as opposed to special creation.”

Mark Ridley

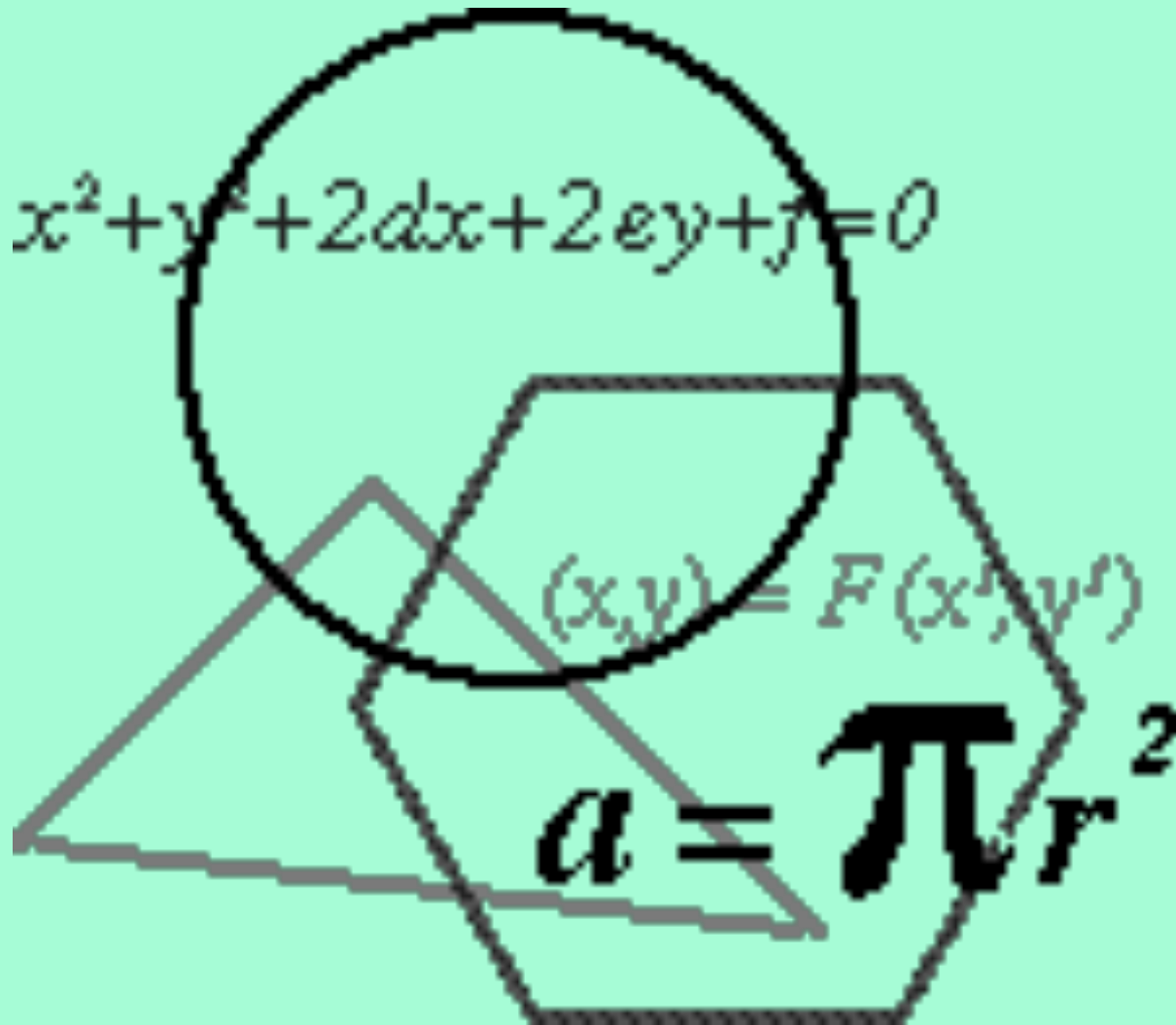
CONCLUSION

**Fossil Record Destroys
Evolution**

And Supports

Creation Science

MATHEMATICS



THERMODYNAMICS

➤ Evolution -

Principle of Innovation

Higher & Higher Complexity

➤ Thermodynamics -

Universally Accepted

No Exceptions Observed

Except True Miracles

“Thus, heat always flows spontaneously from a hotter to a colder body; gases always seep thru an opening spontaneously from a region of high pressure to a region of low pressure; gases & liquids left by themselves always tend to mix, not unmix. ... Rocks weather & crumble; iron rusts; people grow old. These are all examples of **irreversible processes that take place naturally in only one direction &, by their one-sidedness, express the 2nd law of thermodynamics.”**

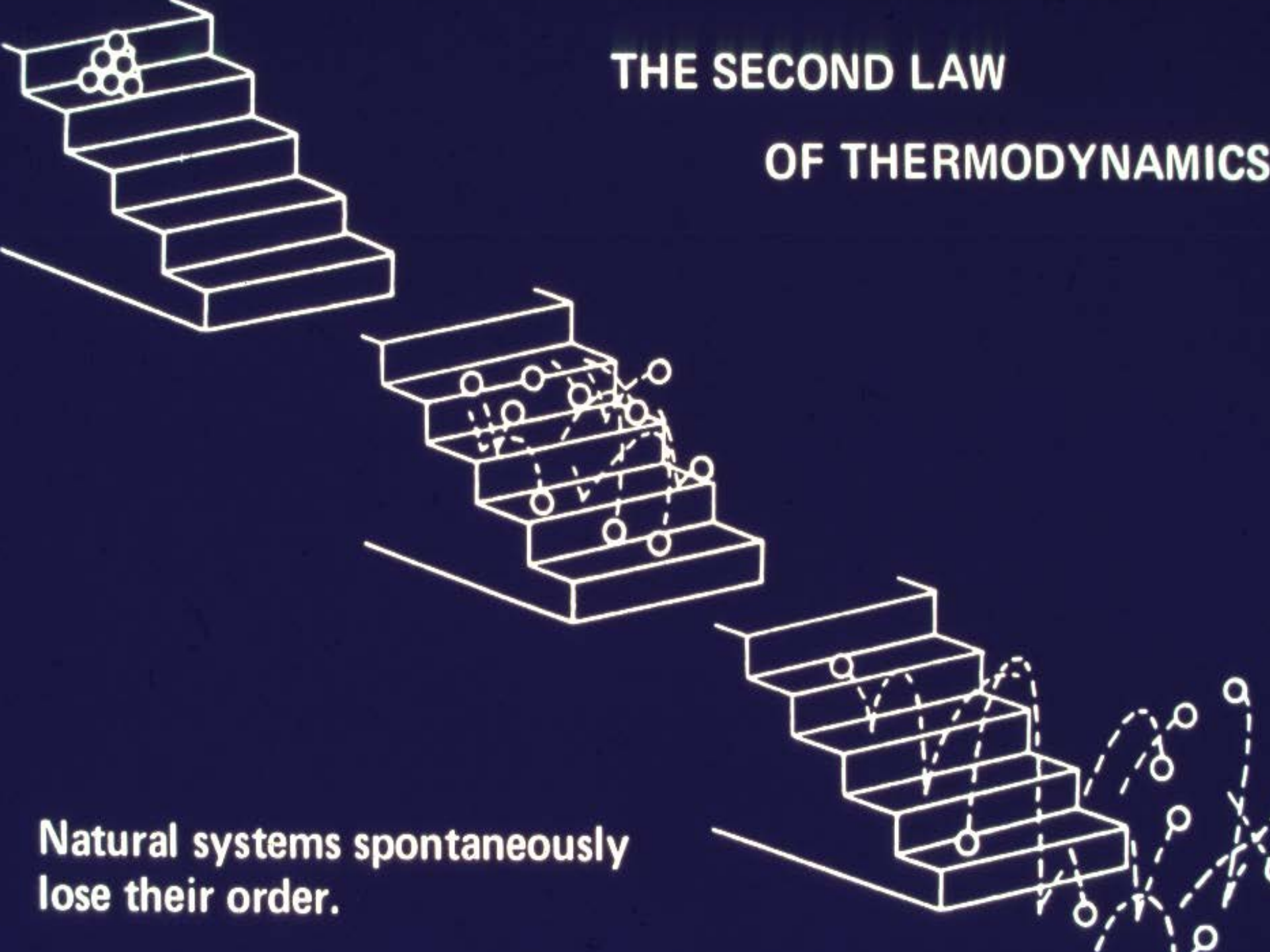
Sears & Zemansky

2nd LAW of Thermodynamics

- Irreversible tendency to unwind
- Movement from organization to disorganization
- Law of decay
- Isa 51:6, Ro 8:20-22

THE SECOND LAW

OF THERMODYNAMICS



Natural systems spontaneously lose their order.





**After a
Million Years?**

After 10 Million Years?



THE MYTH OF EVOLUTION

“Ultimately the Darwinian theory of evolution is no more nor less than the great cosmogenic **myth** of the 20th century.”

Michael Denton

WEAKNESS OF EVOLUTION

- **Mechanism - None**
- **Support - Superficial**
- **Destroying - Past Support**
- **Against - Supports Creation**

WHY EVOLUTION?

➤ **It is Man's best explanation leaving God out.**



➤ **If God is Creator, then all men stand accountable to Him.**