

SCIENCE &

SCRIPTURE

In the beginning God created
the heavens and the earth.

Gen 1:1



CREATION VS EVOLUTION

➤ **Introduction**

➤ **Weakness of Evolution**

➤ **Destroying Evidence**



➤ **Scientific Evidence for Creation**

CONCLUSION

➤ **Evolution -**

**positive evidence is superficial
real science destroys theory**

➤ **Creation -**

**science supports intelligent design
Science Supports Biblical Worldview**

How do Ordered Structures Arise?



Natural Order





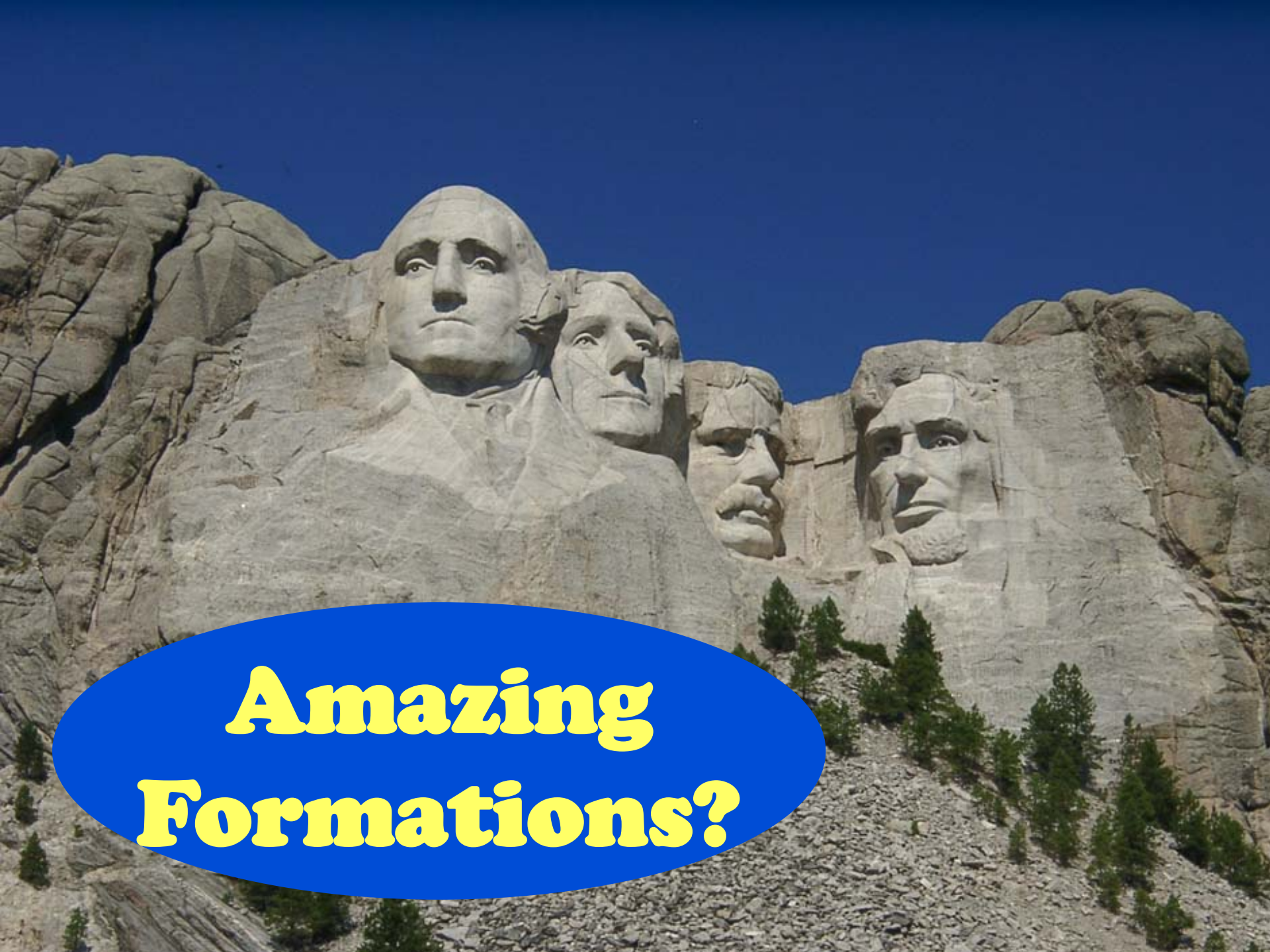
Camel Rock



SPECIFIED COMPLEXITY







**Amazing
Formations?**

**“The principal
characteristic of intelligent
causation is CHOICE”**

Wm Dembski

**“Intelligent design thereby
becomes a theory for detecting
& measuring information”**

Dembski

**“Intelligent design is
theologically minimalist.”**

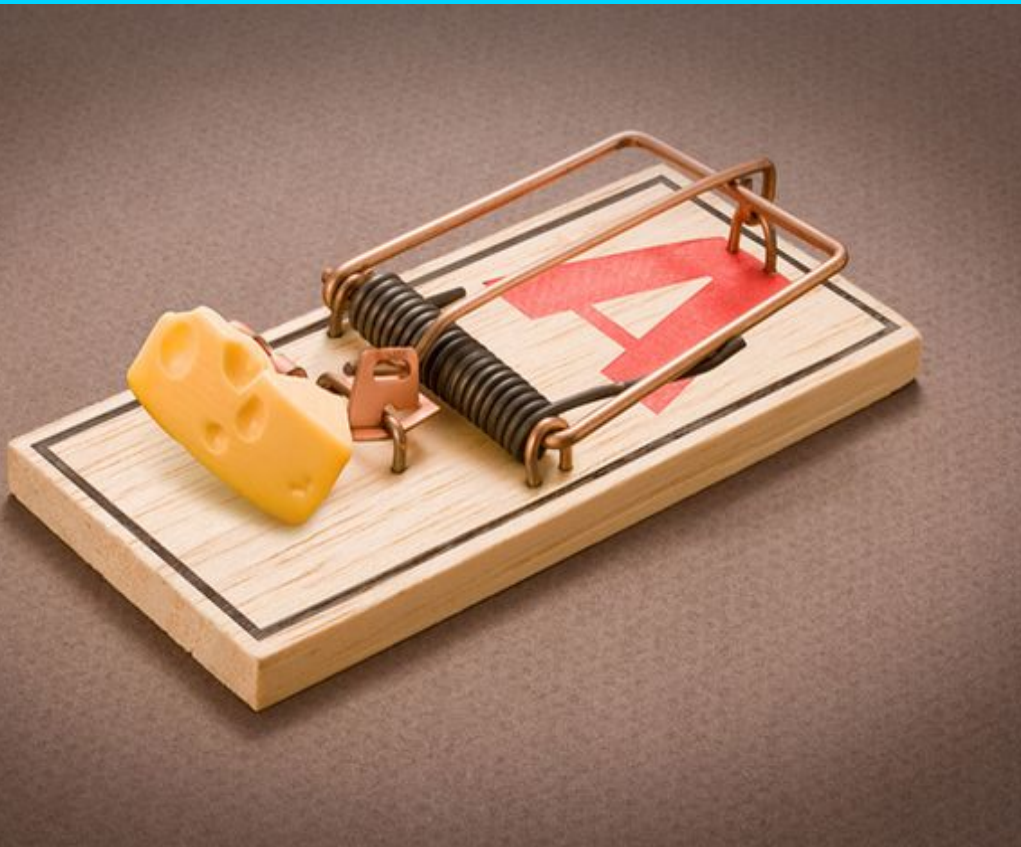
Dembski

DEFINITION

“... intelligent design consists in empirically detecting design and then reverse engineering those objects detected to be designed.”

Dembski

IRREDUCIBLE COMPLEXITY



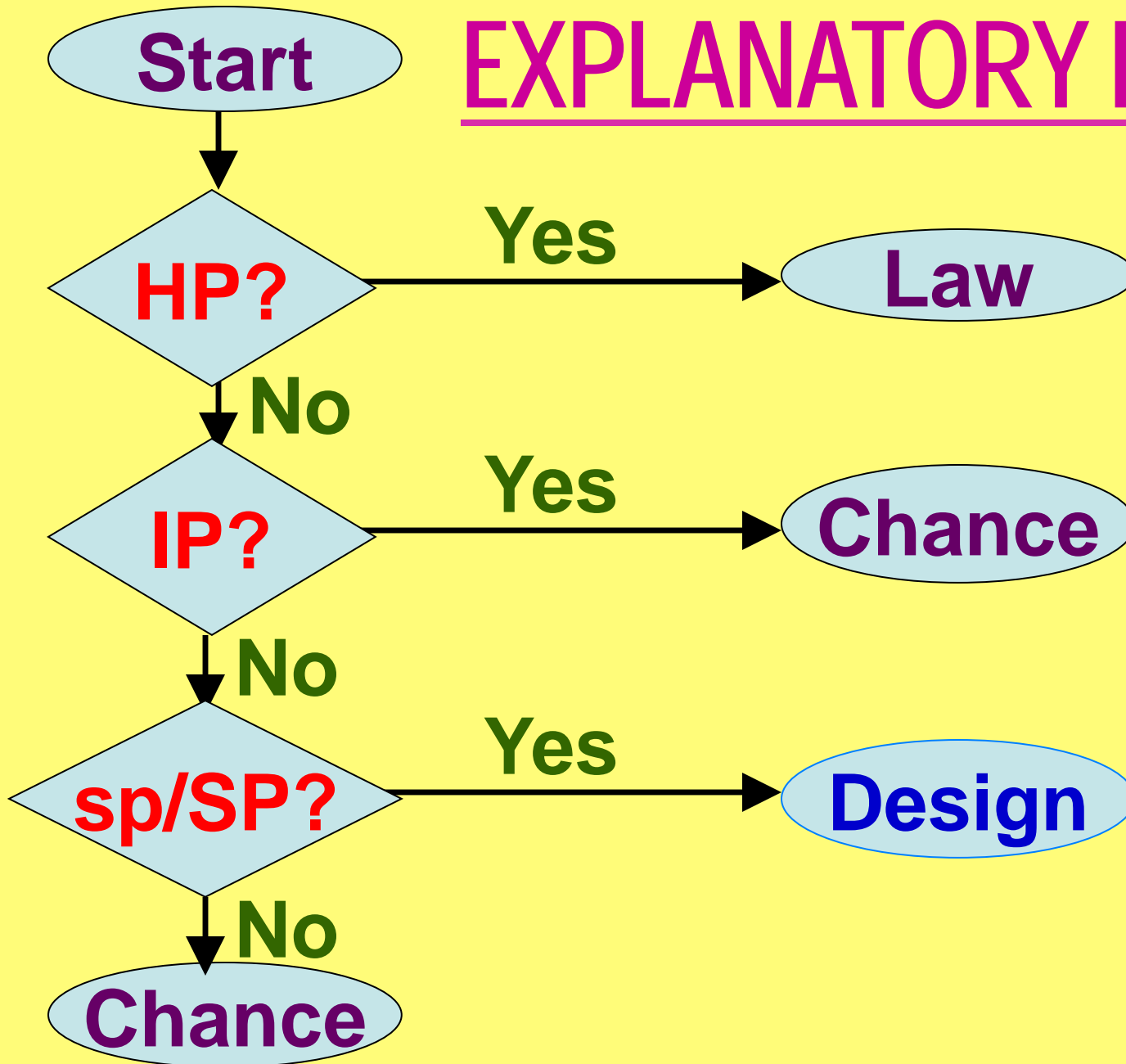
- ✓ Base
- ✓ Holding Bar
- ✓ Spring
- ✓ Hammer
- ✓ Catch

Michael Behe

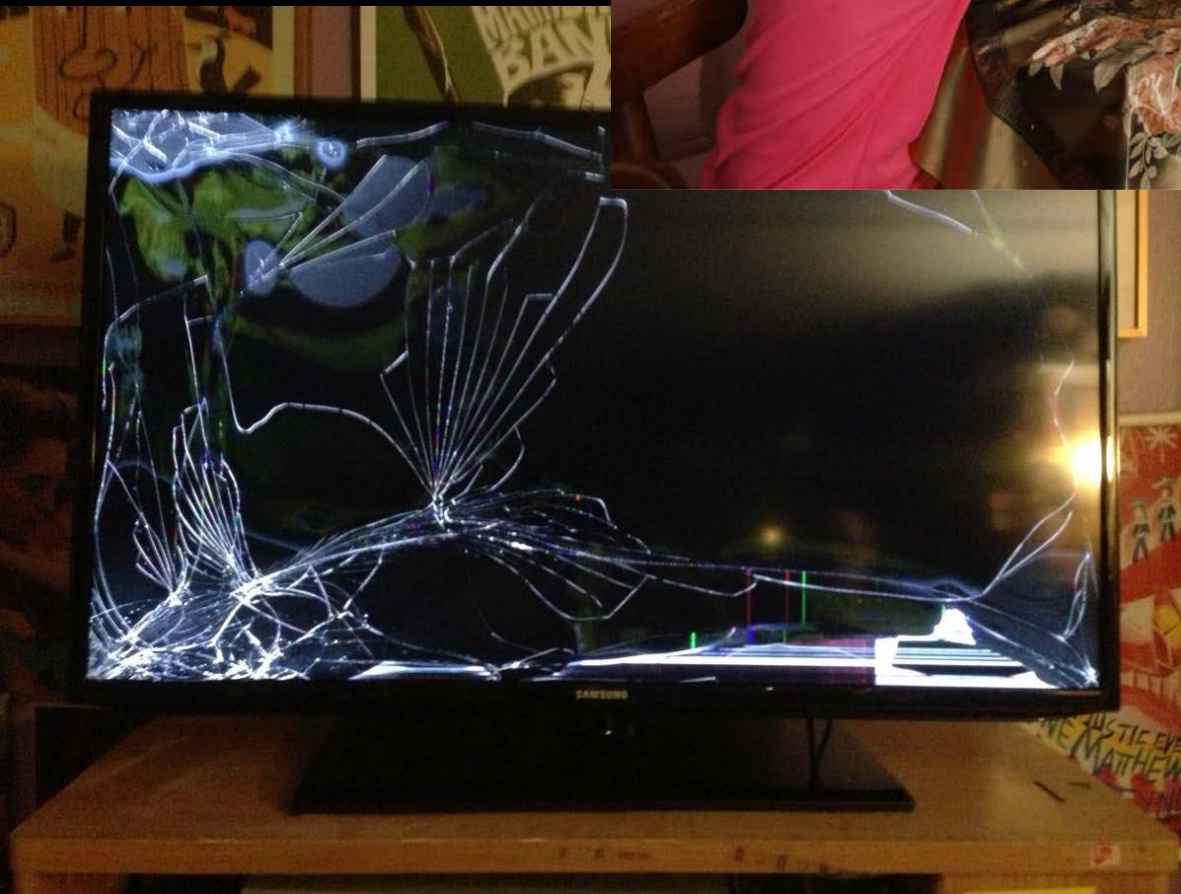
EXPLANATORY FILTER

1. Does **Law Explain**?
2. Does **Chance Explain**?
3. Does **Design Explain**?

EXPLANATORY FILTER



**What is
cause?**



**Natural?
Chance?
Human?**



EVIDENCE from

Biology & Genetics

“In whose hand is the life of every living thing, & the breath of all mankind?”

Job 12:10

Embryology, etc

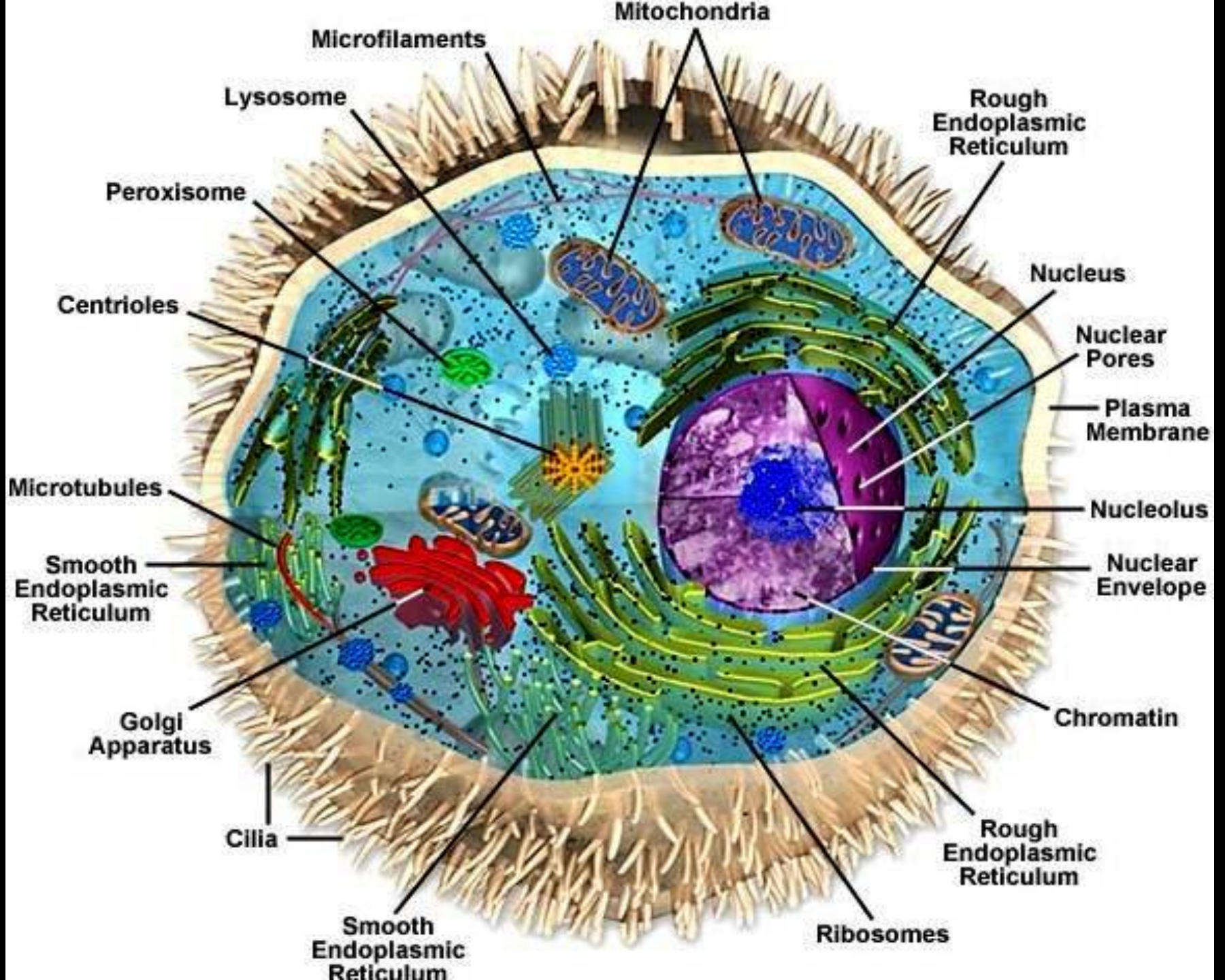




Genetics

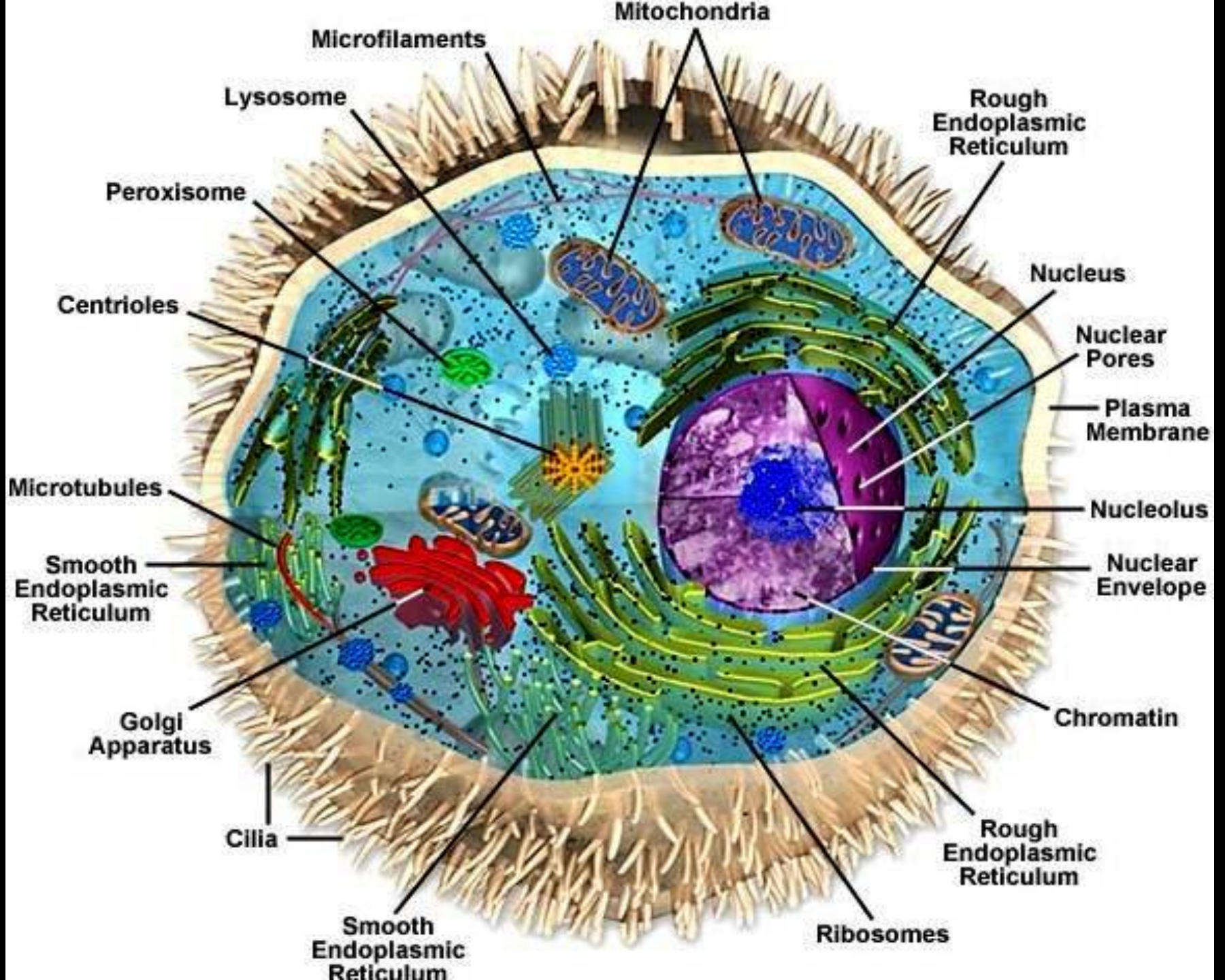
Evidence of Design

Evolution - Life began in Simple Form



1 CELL

- ✓ DNA
- ✓ RNA
- ✓ Mitochondrion
- ✓ ATP
- ✓ Polysaccharides
- ✓ Cyclic AMP
- ✓ Ribosomes
- ✓ Lysosomes
- ✓ Lipids
- ✓ Porphyrins
- ✓ Proteins
- ✓ Amino Acids



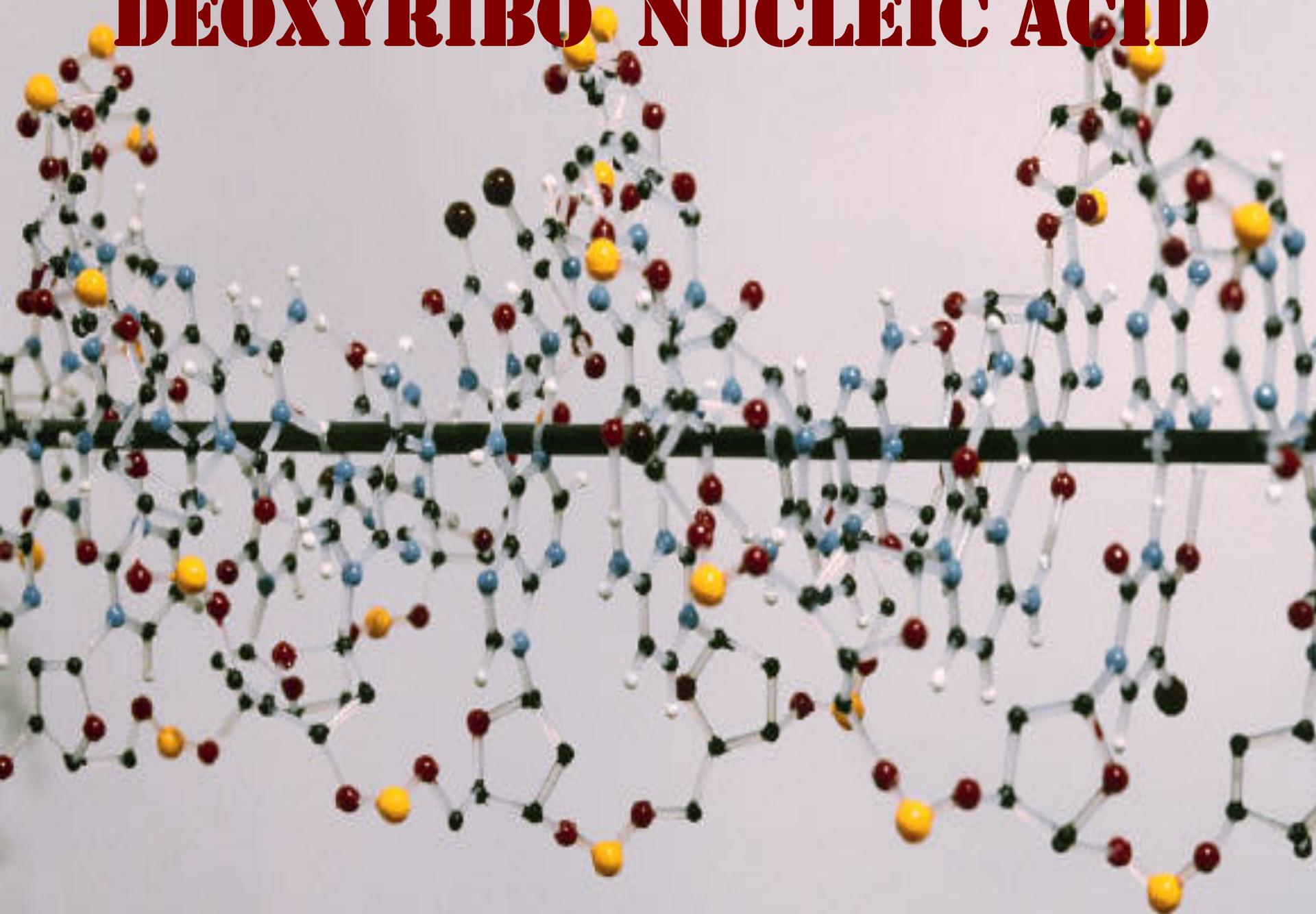
“The cumulative result shows with piercing clarity that life is based on *machines*—machines made of molecules!”

Michael Behe

“Molecular biology has shown that even the simplest of all living systems on earth today, bacterial cells, are exceedingly **complex objects. ... far **more complicated** than anything built by man ...”**

Michael Denton

DEOXYRIBO NUCLEIC ACID

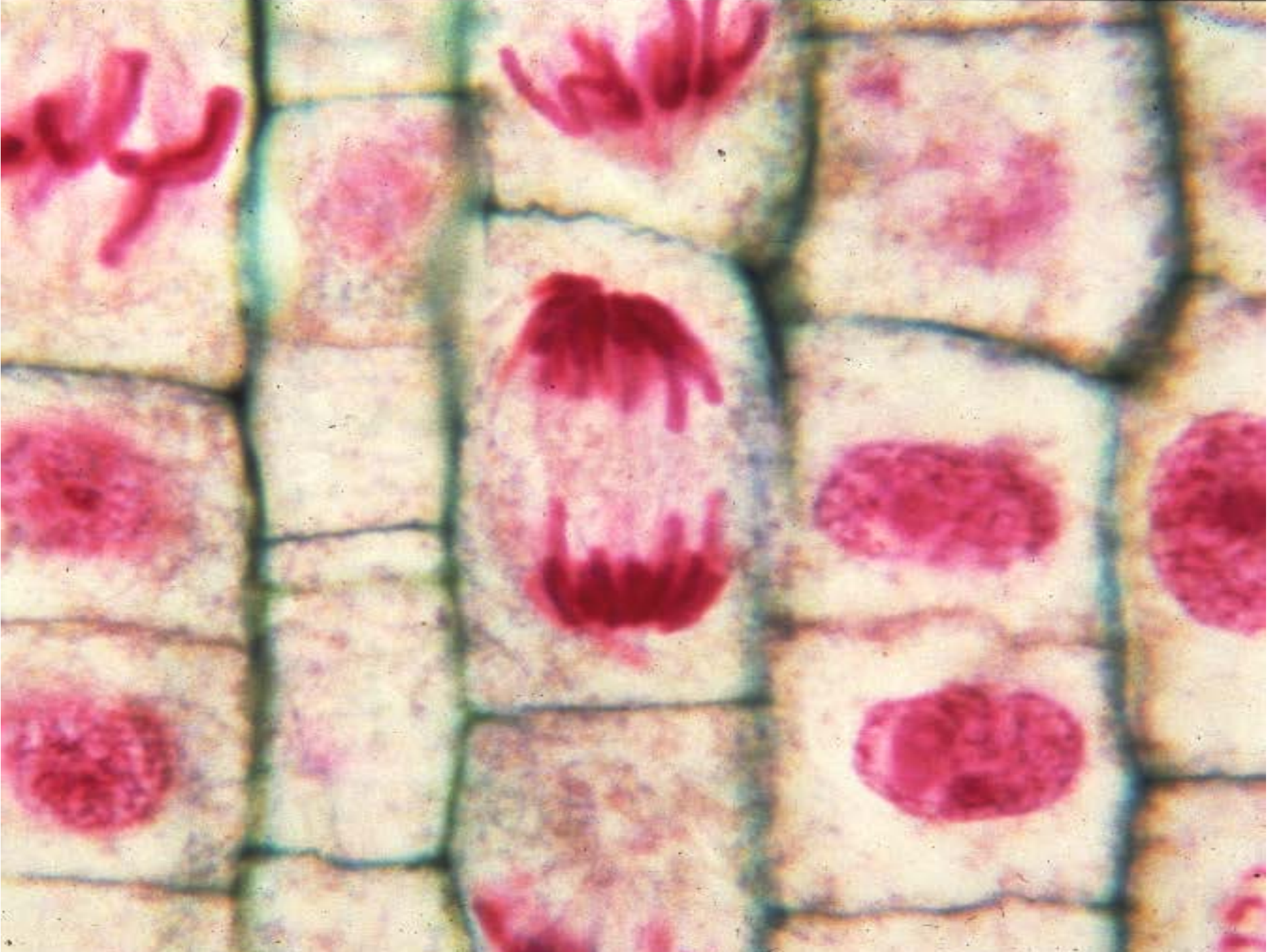


DNA

A glowing DNA double helix structure is shown against a black background. The two strands are represented by thick, brownish-orange tubes that curve around each other. Between the strands, the base pairs are represented by colorful, glowing rectangular blocks in shades of red, blue, green, and yellow. The overall effect is that of a futuristic or high-tech biological structure.

- Double Helix Chains
- Library in Molecule
- All Characteristics

- More Info Stored than any Other Known System

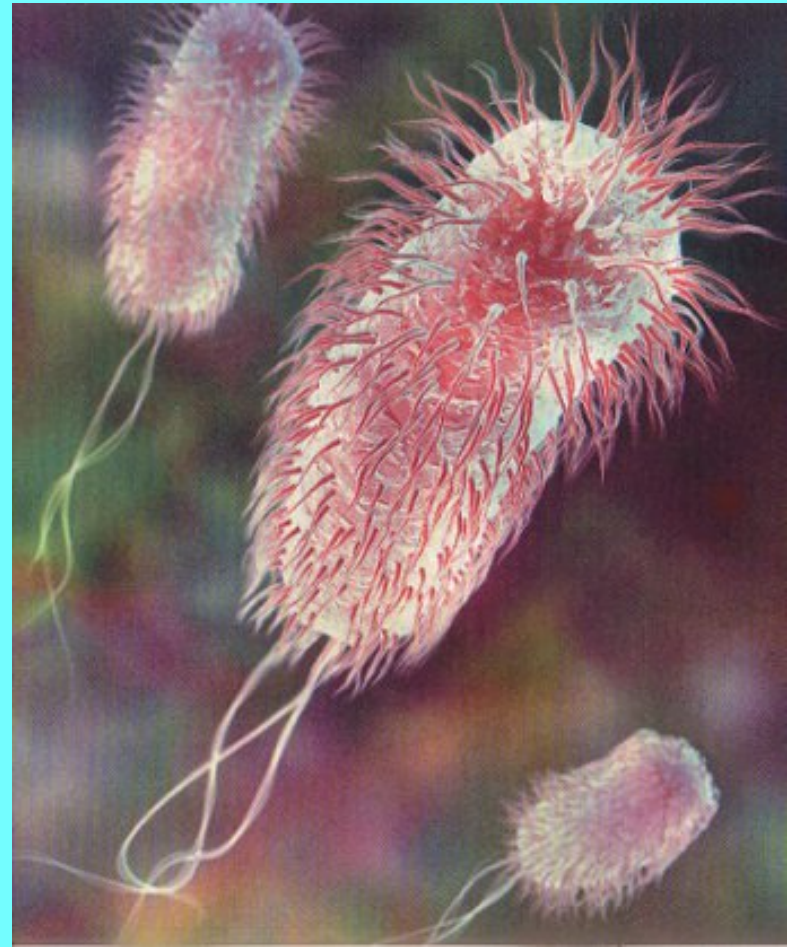


DNA LIBRARY

Escherichia coli - ~ 3 million

3-letter codons

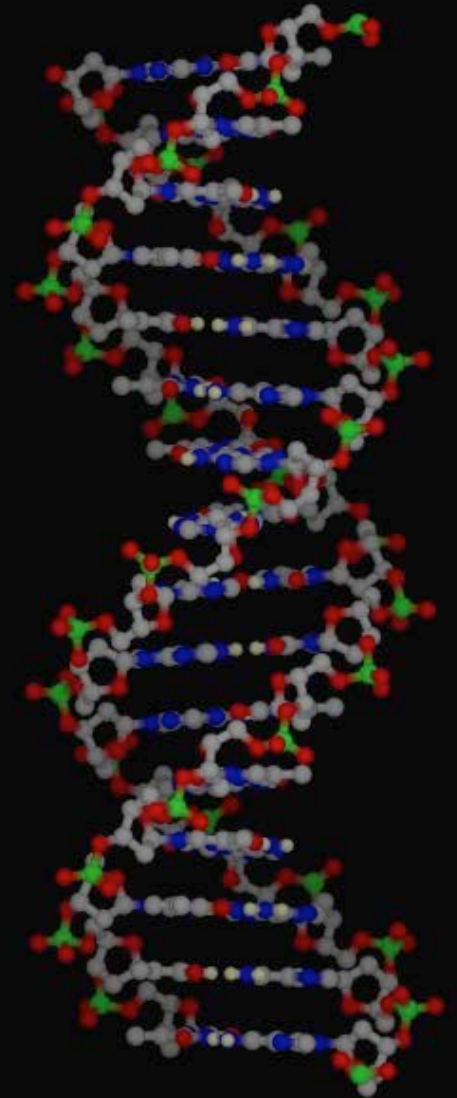
**= 3 volumes of
1,000 pages at
1,000 words/page**



DNA LIBRARY

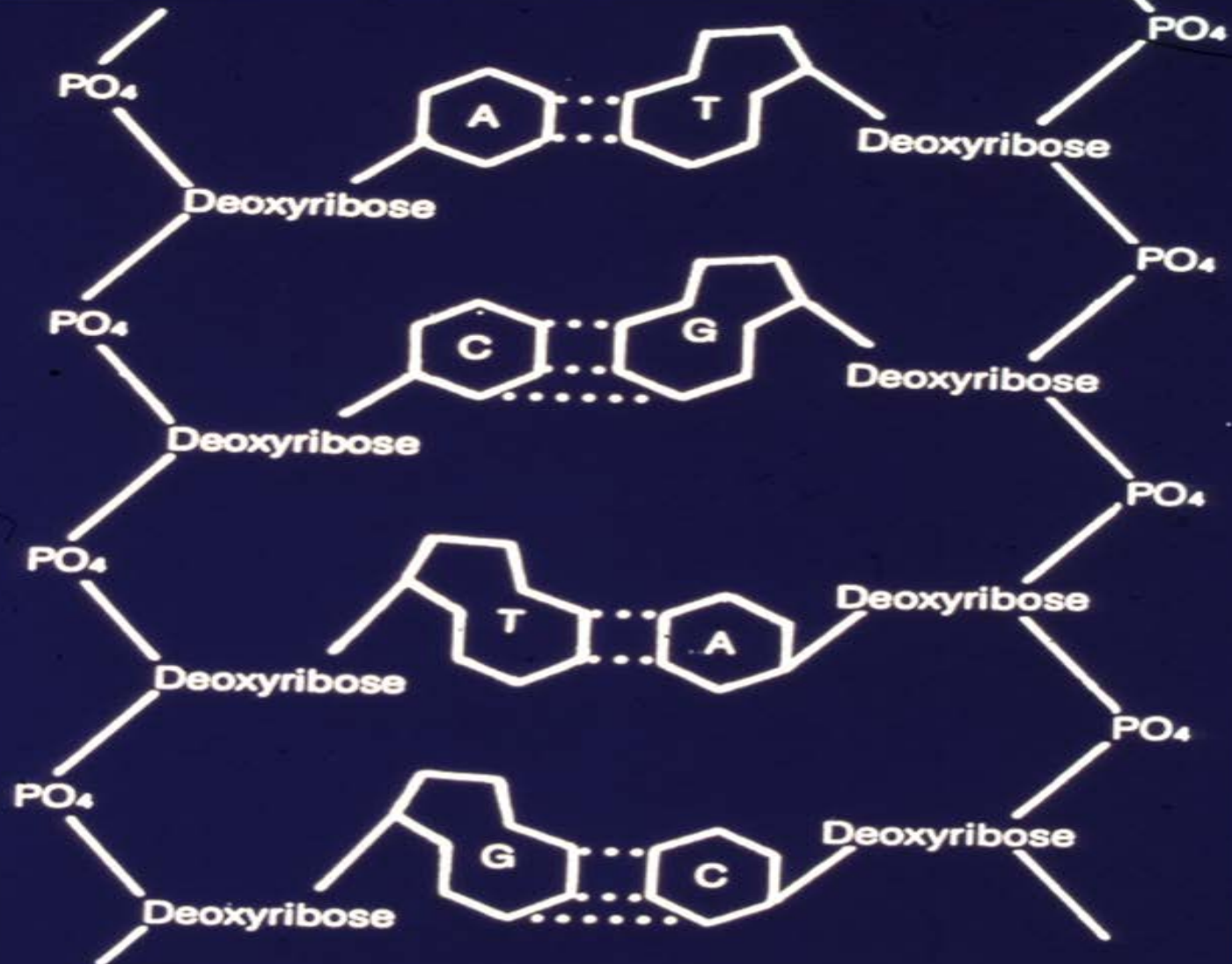
**Human - ~ 2 billion
3-letter codons**

**= 2,000 volumes of
1,000 pages at
1,000 words/page**



The 64 Codons and Their Amino Acid Assignments

| | | | | | | | |
|-----|------------|-----|-----------|-----|---------------|-----|---------------|
| AAA | Lysine | CAA | Glutamine | GAA | Glutamic acid | UAA | End chain |
| AAC | Asparagine | CAC | Histidine | GAC | Aspartic acid | UAC | Tyrosine |
| AAG | Lysine | CAG | Glutamine | GAG | Glutamic acid | UAG | End chain |
| AAU | Asparagine | CAU | Histidine | GAU | Aspartic acid | UAU | Tyrosine |
| ACA | Threonine | CCA | Proline | GCA | Alanine | UCA | Serine |
| ACC | Threonine | CCC | Proline | GCC | Alanine | UCC | Serine |
| ACG | Threonine | CCG | Proline | GCG | Alanine | UCG | Serine |
| ACU | Threonine | CCU | Proline | GCU | Alanine | UCU | Serine |
| AGA | Arginine | CGA | Arginine | GGA | Glycine | UGA | End chain |
| AGC | Serine | CGC | Arginine | GGC | Glycine | UGC | Cysteine |
| AGG | Arginine | CGG | Arginine | GGG | Glycine | UGG | Tryptophan |
| AGU | Serine | CGU | Arginine | GGU | Glycine | UGU | Cysteine |
| AUA | Isoleucine | CUA | Leucine | GUA | Valine | UUA | Leucine |
| AUC | Isoleucine | CUC | Leucine | GUC | Valine | UUC | Phenylalanine |
| AUG | Methionine | CUG | Leucine | GUG | Valine | UUG | Leucine |
| AUU | Isoleucine | CUU | Leucine | GUU | Valine | UUU | Phenylalanine |



THE PHOSPHATE-DEOXYRIBOSE BACKBONES OF TWO DNA STRANDS HOLD THEIR ATTACHED NITROGEN BASES IN PROPER POSITION SO THAT COMPLEMENTARY BASES A AND T OR C AND G ON OPPOSITE STRANDS CAN FORM HYDROGEN-BONDED PAIRS. THE CODED INFORMATION IN A GENE IS CONTAINED IN THE SEQUENCE OF THE NUCLEOTIDES WHICH ACT AS LETTERS IN A FOUR-LETTER ALPHABET.

SELF-CONTAINED

- 1. Directs the synthesis of specific proteins**
- 2. Cannot replicate without the help of those proteins**

Complexity Everywhere



**2-3,000
Eggs/Day**



**Colony = 1 Queen &
60,000 Workers**

WORKERS

1. Sanitation

2. Dietician



3. Manufacturing

4. Construction

5. Security

6. R & D

INTELLIGENT DESIGN

**At All
Levels
Everywhere**



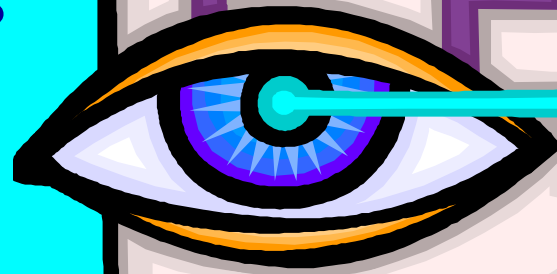
HUMAN BODY

➤ **12 Billion
Brain Cells**



➤ **10 Trillion
Body Cells**

HUMAN EYE



**Sensitive to 6
Quanta of Light**

MORE EXAMPLES

- 1. Ants that Eat Junk Food**
- 2. Molds that Eat Animals**
- 3. Beetles with Big Guns**
- 4. Moths with Ear Problems**
- 5. Carnivorous Plants**

ANTHROPOCENTRIC PRINCIPLE

“... everything about the universe tends toward man, toward making life possible & sustaining it.”

H. Ross

CAUSE & EFFECT

- **Fundamental Premise**
- **Relates All to Phenomenon**
- **No Effect Greater than Cause**
- **Implies a Primary Cause**

1st CAUSE

✓ **Limitless Space**

✓ **Endless Time**

✓ **Boundless Energy**

✓ **Interrelationships**

✓ **Incredible Complexity**

✓ **Spiritual Values**

✓ **Human Responsibility**

✓ **Human Life**

✓ **Infinite**

✓ **Eternal**

✓ **Omnipotent**

✓ **Omnipresent**

✓ **Omniscient**

✓ **Spiritual**

✓ **Volitional**

✓ **Living**

CONCLUSION

➤ **Evolution -**

Positive Evidence is Superficial

Real Science Destroys Theory

➤ **Creation –**

Science Supports Intelligent Design

Science Supports Biblical Worldview