

GENESIS 1 EXPOSITION

Genesis 3

GENESIS 1-2 - Creation

God saw all that he had made,
and behold, it was very good.

Gen 1:31





FALL

WORD of GOD

1. Gen 1 - Creation
2. Gen 2 - Command
3. Gen 3 - Changed

GENESIS Outline

- I. Primeval History** **1:1-11:26**
 - A. History of the Creation** **1:1-2:3**
 - B. Early History of Mankind** **2:4-3:24**
 - 1. Creation of Mankind** **2:4-25**
 - 2. Fall of Mankind** **3:1-24**
 - a. Dangerous Temptation** **3:1-5**
 - 1) Description of Tempter** **3:1**

3:1 Now the serpent was more crafty than any beast of the field which the LORD God had made. And he said to the woman, “Indeed, has God said, ‘You shall not eat from any tree of the garden’?”

SERPENT

1. Views

a. Symbolic

b. Animal

c. Agent

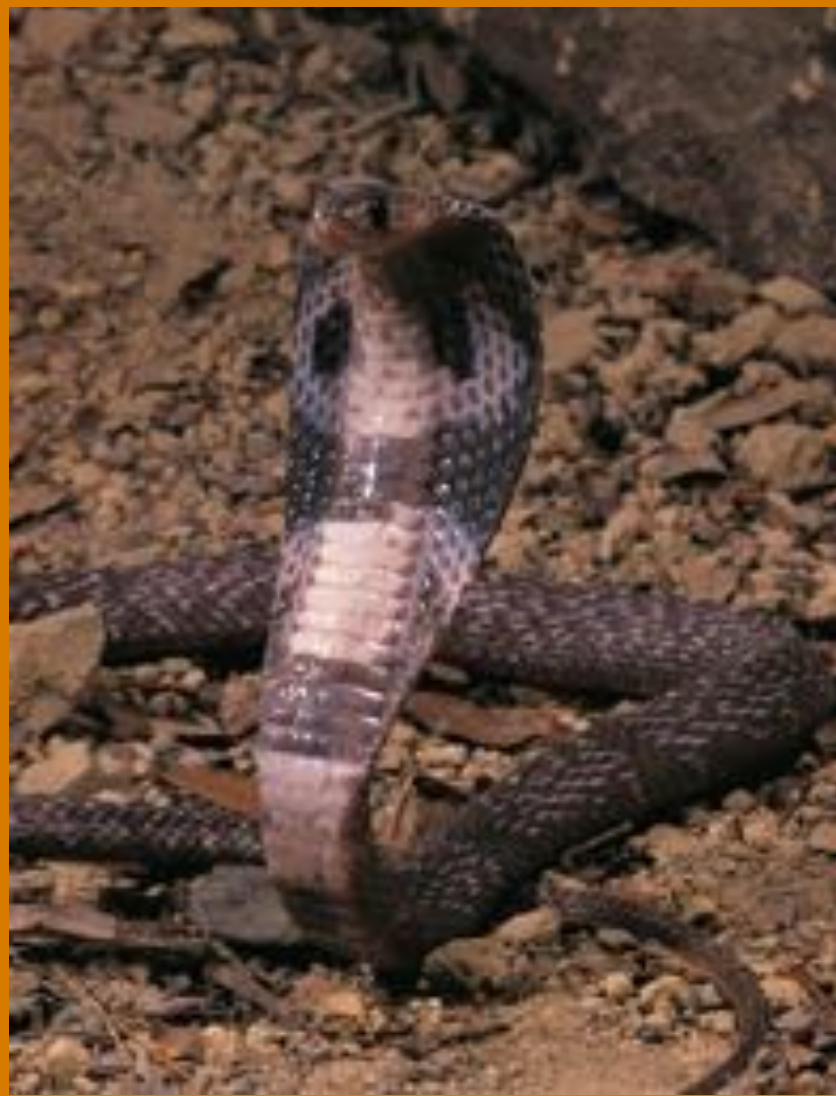
2. Word Play

a. עָרוּם (arum) -

crafty

b. עָרוֹם (arom) -

naked



3:1 Now the serpent was more crafty than any beast of the field which the LORD God had made. And he said to the woman, “Indeed, has God said, ‘You shall not eat from any tree of the garden’?”

ORIGIN of EVIL

Galatia

1. Angels - heaven not earth

GENESIS Outline

- I. Primeval History** **1:1-11:26**
 - A. History of the Creation** **1:1-2:3**
 - B. Early History of Mankind** **2:4-3:24**
 - 1. Creation of Mankind** **2:4-25**
 - 2. Fall of Mankind** **3:1-24**
 - a. Dangerous Temptation** **3:1-5**
 - 1) Description of Tempter** **3:1**
 - 2) Distorting Doubts**

3:1 Now the serpent was more crafty than any beast of the field which the LORD God had made. And he said to the woman, “Indeed, has God said, ‘You shall not eat from any tree of the garden’?”

3:1 Now the serpent was more crafty than any beast of the field which the LORD God had made. And he said to the woman, “Indeed, has God said, ‘You shall not eat from any tree of the garden’?”

“You shall **not eat from
any tree of the garden?”**

Gen 3:1

- **Doubt - “Indeed ...”**
- **Denial - “not”**
- **Distortion - omission**

TEMPTATION

1. Vulnerability - alone
2. Doubts - questions

GENESIS Outline

- I. Primeval History** **1:1-11:26**
 - A. History of the Creation** **1:1-2:3**
 - B. Early History of Mankind** **2:4-3:24**
 - 1. Creation of Mankind** **2:4-25**
 - 2. Fall of Mankind** **3:1-24**
 - a. Dangerous Temptation** **3:1-5**
 - 1) Description of Tempter** **3:1**
 - 2) Distorting Doubts**
 - 3) Deception of Woman** **3:2-3**

3:2-3 The woman said to the serpent, “From the fruit of the trees of the garden we may eat; 3 but from the fruit of the tree which is in the middle of the garden, God has said, ‘You shall not eat from it or touch it, or you will die.’”

**“... From fruit of trees
of the garden we may eat;”**

3:2

“... From **any tree of the
garden you may eat**

freely; ...”

2:16

TEMPTATION

- 1. Vulnerability - alone**
- 2. Doubts - questions**
- 3. Judges - authority**
- 4. Minimization - goodness**

3:2-3 The woman said to the serpent, “From the fruit of the trees of the garden we may eat; **3** but from the fruit of the tree which is in the middle of the garden, God has said, ‘You shall not eat from it or touch it, or you will die.’”

3:2-3 The woman said to the serpent, “From the fruit of the trees of the garden we may eat; **3** but from the fruit of the tree which is in the middle of the garden, God has said, ‘**You shall not eat from it or touch it, or you will die.**’”

“... but from the fruit of the tree of which is in the middle of the garden, God said ‘you shall not eat from it **or touch it, lest you die.’”** 3:3

“... but from the tree of the knowledge of good and evil you shall not eat, for in the day that you eat from it you will surely die.” 2:17

TEMPTATION

- 1. Vulnerability - alone**
- 2. Doubts - questions**
- 3. Judges - authority**
- 4. Minimization - goodness**
- 5. Magnification - restriction**

3:2-3 The woman said to the serpent, “From the fruit of the trees of the garden we may eat; **3** but from the fruit of the tree which is in the middle of the garden, God has said, ‘You shall not eat from it or touch it, **or you will die.**’”

“... but from the tree of the knowledge of good and evil you shall not eat, for in the day that you eat from it you will surely die.”

2:17

TEMPTATION

- 1. Vulnerability - alone**
- 2. Doubts - questions**
- 3. Judges - authority**
- 4. Minimization - goodness**
- 5. Magnification - restriction**
- 6. De-emphasis - consequences**

GENESIS Outline

- | | |
|-----------------------------------|---------------|
| 2. Fall of Mankind | 3:1-24 |
| a. Dangerous Temptation | 3:1-5 |
| 1) Description of Tempter | 3:1 |
| 2) Distorting Doubts | |
| 3) Deception of Woman | 3:2-3 |
| 4) Denial & Defamation | 3:4-5 |

3:4-5 The serpent said to the woman, “You surely will not die! 5 “For God knows that in the day you eat from it your eyes will be opened, and you will be like God, knowing good and evil.”

3:4-5 The serpent said to the woman, “You surely will not die! **5** “For God knows that in the day you eat from it your eyes will be opened, and you will be like God, knowing good and evil.”

3:4-5 The serpent said to the woman, “You surely will not die! 5 “For God knows that in the day you eat from it your eyes will be opened, and you will be like God, knowing good and evil.”

TEMPTATION

1. **Vulnerability - alone**
2. **Doubts - questions**
3. **Judges - authority**
4. **Minimization - goodness**
5. **Magnification - restriction**
6. **De-emphasis - consequences**
7. **Alternative - appealing**

GENESIS Outline

- I. Primeval History** **1:1-11:26**
 - A. History of the Creation** **1:1-2:3**
 - B. Early History of Mankind** **2:4-3:24**
 - 1. Creation of Mankind** **2:4-25**
 - 2. Fall of Mankind** **3:1-24**
 - a. Dangerous Temptation** **3:1-5**
 - b. Damaging Transgression** **3:6-7**
 - 1) Disobedience** **3:6**

3:6 When the woman saw that the tree was good for food, and that it was a delight to the eyes, and that the tree was desirable to make one wise, she took from its fruit and ate; and she gave also to her husband with her, and he ate.

APPEAL

1. Sensual - Physical

1Jn 2:16



3:6 When the woman saw that the tree was good for food, and that it was a delight to the eyes, and that the tree was desirable to make one wise, she took from its fruit and ate; and she gave also to her husband with her, and he ate.

APPEAL

1. Sensual - Physical
2. Aesthetic - Emotions

1Jn 2:16



3:6 When the woman saw that the tree was good for food, and that it was a delight to the eyes, and that the tree was desirable to make one wise, she took from its fruit and ate; and she gave also to her husband with her, and he ate.

APPEAL

1. Sensual - Physical
2. Aesthetic - Emotions
3. Wisdom - Intellect

1Jn 2:16



3:6 When the woman saw that the tree was good for food, and that it was a delight to the eyes, and that the tree was desirable to make one wise, she took from its fruit and ate; and she gave also to her husband with her, and he ate.

APPEAL

1. Sensual - Physical
2. Aesthetic - Emotions
3. Wisdom - Intellect
4. Rationalization - Will

1Jn 2:16



3:6 When the woman saw that the tree was good for food, and that it was a delight to the eyes, and that the tree was desirable to make one wise, she took from its fruit and ate; and she gave also to her husband with her, and he ate.

GENESIS Outline

- I. Primeval History** **1:1-11:26**
 - A. History of the Creation** **1:1-2:3**
 - B. Early History of Mankind** **2:4-3:24**
 - 1. Creation of Mankind** **2:4-25**
 - 2. Fall of Mankind** **3:1-24**
 - a. Dangerous Temptation** **3:1-5**
 - b. Damaging Transgression** **3:6-7**
 - 1) Disobedience** **3:6**
 - 2) Downfall** **3:7**

3:7 Then the eyes of both of them were opened, and they knew that they were naked; and they sewed fig leaves together and made themselves loin coverings.

3:7 Then the eyes of both of them were opened, and they knew that they were naked; and they sewed fig leaves together and made themselves loin coverings.

3:7 Then the eyes of both of them were opened, and they knew that they were naked; and they sewed fig leaves together and made themselves loin coverings.

ORIGIN of EVIL

Galatia

1. Angels - heaven not earth
2. Mankind - sin on earth

A photograph of the Sea of Galilee at sunset. The sun is a bright yellow orb on the right side of the horizon, casting a long, shimmering reflection across the water. In the middle ground, several wooden piers and fishing nets are visible, extending into the water. The sky is a gradient of orange and yellow, and the water is a deep blue with gentle ripples.

Sea of Galilee

**The tragedy of all tragedies
is the Fall of Mankind!!!**